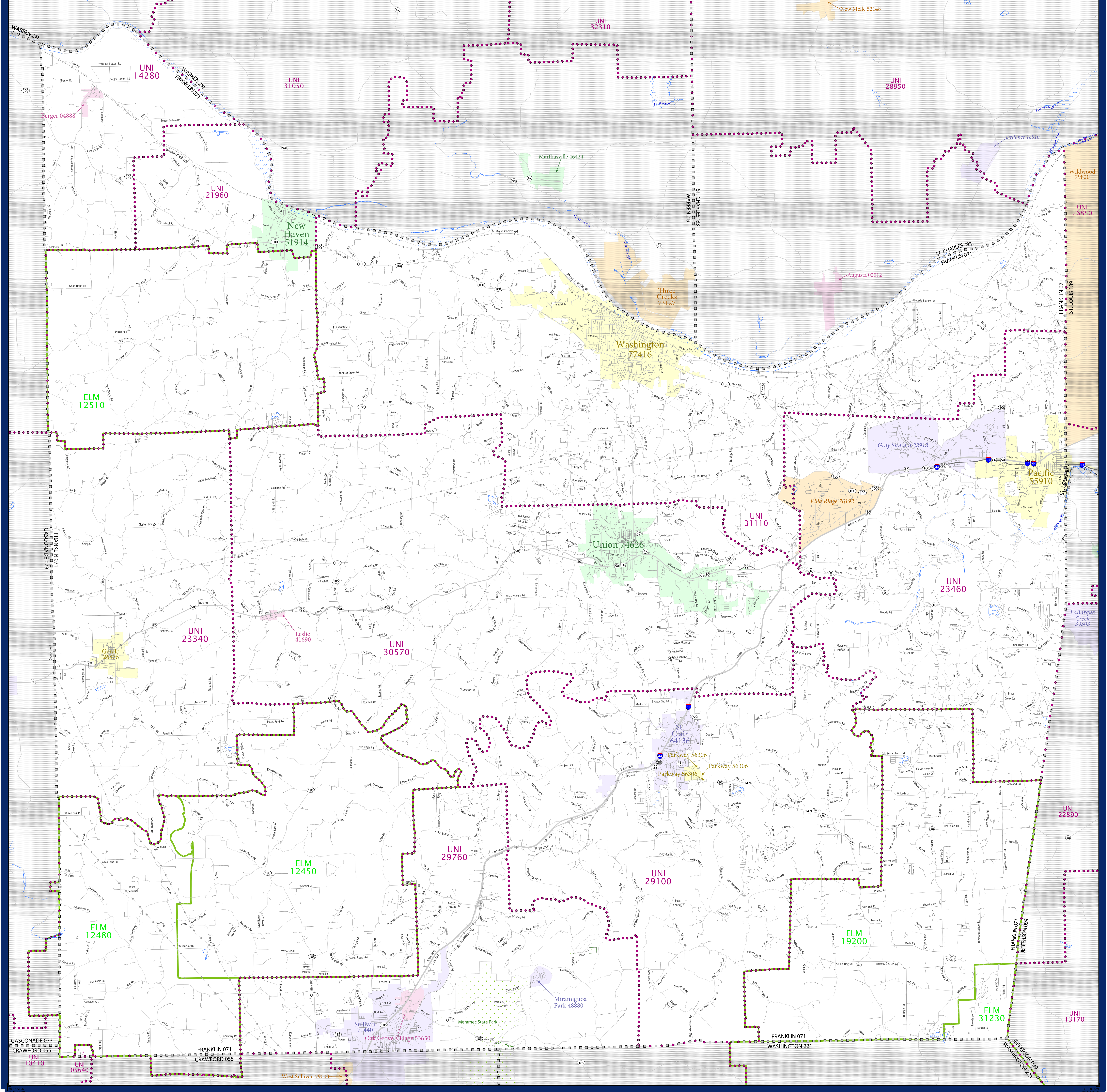


SCHOOL DISTRICT REFERENCE MAP (2010 CENSUS): Franklin County, MO



LEGEND

SYMBOL DESCRIPTION	SYMBOL	SYMBOL	SYMBOL
Federal American Indian Reservation	[Pattern]	L'ANSE RES 1880	
Off-Reservation Trust Land	[Pattern]	T1880	
State American Indian Reservation	[Pattern]	Tama Res 4125	
Alaska Native Regional Corporation	[Pattern]	NANA ANRC 52120	
State (or statistically equivalent entity)	[Pattern]	NEW YORK 36	
County (or statistically equivalent entity)	[Pattern]	ERIE 029	
Minor Civil Division (MCD) ^{1,2}	[Pattern]	Bristol town 07485	
Consolidated City	[Pattern]	MILFORD 47500	
Incorporated Place ^{1,3}	[Pattern]	Davis 18100	
Census Designated Place (CDP) ³	[Pattern]	Incline Village 35100	
Unified School District	[Color]	UNI 03370	
Secondary School District	[Color]	S65 99965	
Elementary School District	[Color]	ELM 02220	

DESCRIPTION	SYMBOL	DESCRIPTION	SYMBOL
Interstate	[Symbol]	Water Body	[Symbol]
U.S. Highway	[Symbol]	Swamp or Marsh	[Symbol]
State Highway	[Symbol]	Glacier	[Symbol]
Other Road	[Symbol]	Military	[Symbol]
Other Road	[Symbol]	National or State Park, Forest, or Reservation Area	[Symbol]
Other Road	[Symbol]	Inset Area	[Symbol]
Other Road	[Symbol]	Outside Subject Area	[Symbol]
Other Road	[Symbol]		

Where state, county, and/or MCD boundaries coincide, the map shows the boundary symbol for only the highest-ranking of these boundaries.

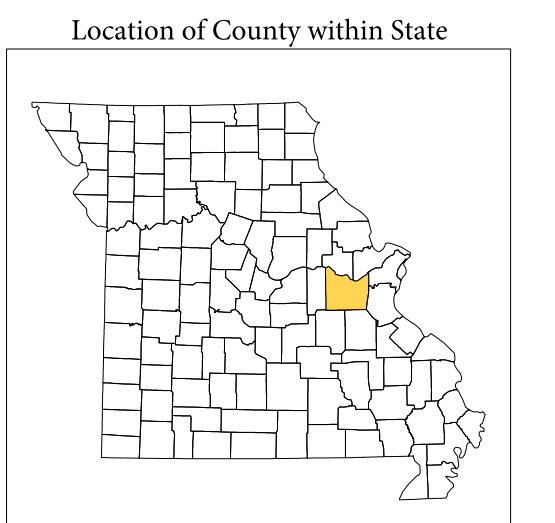
1 A "*" following an MCD name denotes a false MCD. A "*" following a place name indicates that a false MCD exists with the same name and FIPS code as the place; the false MCD label is not shown.

2 MCD boundaries are shown in the following states in which MCDs have functioning governments: Connecticut, Maine, Massachusetts, Michigan, Minnesota, New Hampshire, New Jersey, New York, Pennsylvania, Rhode Island, Vermont, and Wisconsin.

3 Place label color correlates to the place fill color.

SCHOOL DISTRICTS WITHIN COUNTY

TYPE	CODE	NAME
UNI	12450	Spring Bluff R.XV School District
ELM	12480	Strain-Japan R.XVI School District
ELM	12510	Franklin County R.I School District
ELM	19200	Lowndes R.XV School District
ELM	31230	Richwoods R.VI School District
UNI	05640	Crawford County R.I School District
UNI	14280	Gasconade County R.I School District
UNI	21960	New Haven School District
UNI	23340	Gasconade County R.II School District
UNI	23460	Meramec Valley R.III School District
UNI	29100	St. Clair R.VII School District
UNI	29700	Sullivan School District
UNI	30210	Union R.VII School District
UNI	31110	Washington School District



All legal boundaries and names are as of January 1, 2010. The boundaries shown on this map are for Census Bureau statistical data collection and tabulation purposes only; their depiction and designation for statistical purposes does not constitute a determination of jurisdictional authority or rights of ownership or entitlement.

Geographic: Vintage: 2010 Census (reference date: January 1, 2010)
 Data Source: U.S. Census Bureau's MAI/TIGER database (TABL08229)
 Map Created by Geography Division: December 09, 2010

Projection: Albers Equal Area Conic
 Datum: NAD 83
 Spheroid: GRS 80
 1st Standard Parallel: 36 45 55
 2nd Standard Parallel: 39 50 38
 Central Meridian: -92 51 50
 Latitude of Projection's Origin: 35 59 44
 False Easting: 0
 False Northing: 0

The plotted map scale is 1:81017