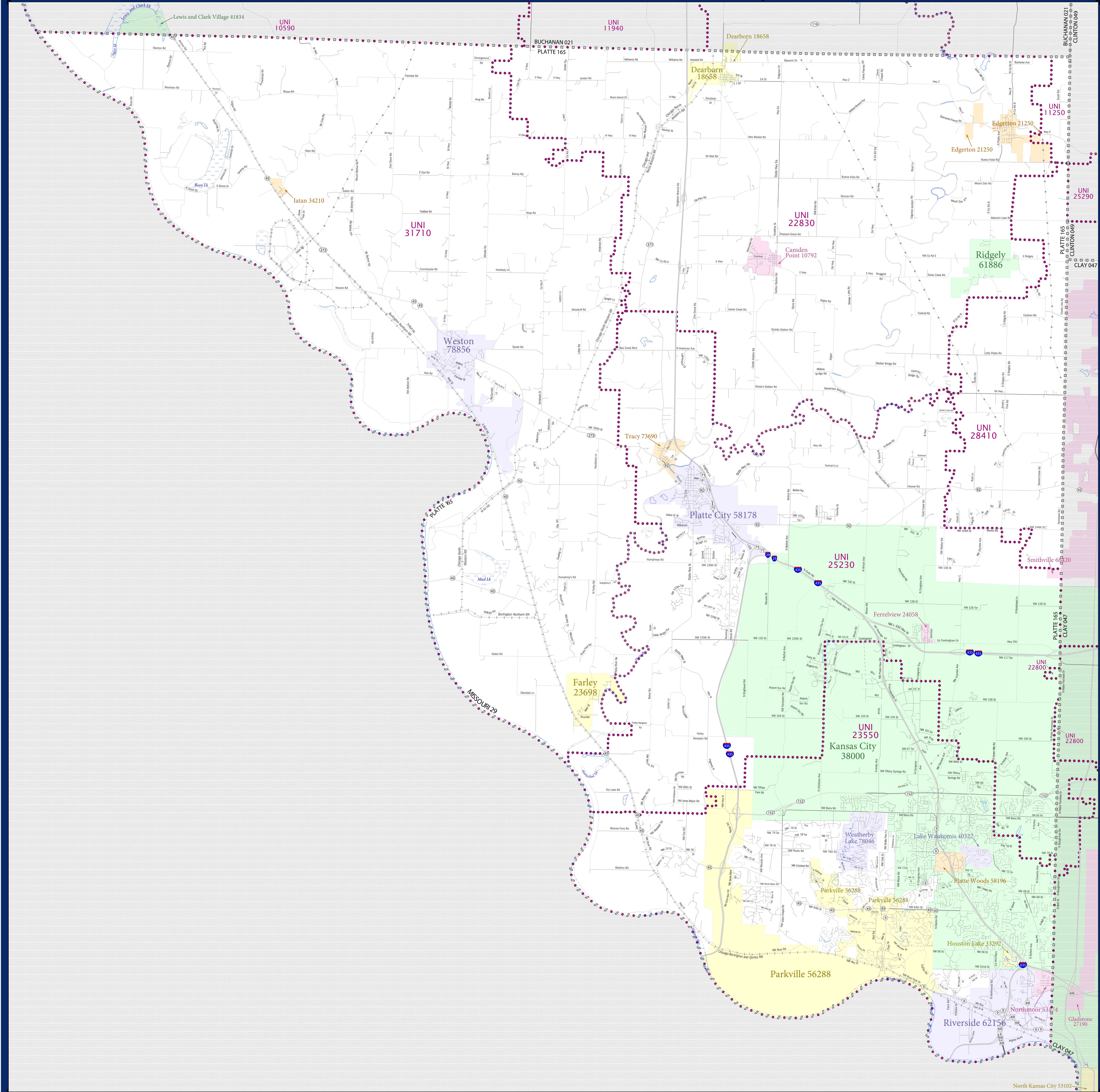


SCHOOL DISTRICT REFERENCE MAP (2010 CENSUS): Platte County, MO



| SYMBOL DESCRIPTION | | LEGEND | |
|---|----------|-----------------------|----------|
| Federal American Indian Reservation | [Symbol] | L'ANSE RES 1880 | [Symbol] |
| Off-Reservation Trust Land | [Symbol] | T1880 | [Symbol] |
| State American Indian Reservation | [Symbol] | Tama Res 4125 | [Symbol] |
| Alaska Native Regional Corporation | [Symbol] | NANA ANRC 52120 | [Symbol] |
| State (or statistically equivalent entity) | [Symbol] | NEW YORK 36 | [Symbol] |
| County (or statistically equivalent entity) | [Symbol] | ERIE 029 | [Symbol] |
| Minor Civil Division (MCD) ^{1,2} | [Symbol] | Bristol town 07485 | [Symbol] |
| Consolidated City | [Symbol] | MILFORD 47500 | [Symbol] |
| Incorporated Place ^{1,3} | [Symbol] | Davis 18100 | [Symbol] |
| Census Designated Place (CDP) ³ | [Symbol] | Incline Village 35100 | [Symbol] |
| Unified School District | [Symbol] | UNI 03370 | [Symbol] |
| Secondary School District | [Symbol] | SEC 99965 | [Symbol] |
| Elementary School District | [Symbol] | ELM 02220 | [Symbol] |

| DESCRIPTION | SYMBOL | DESCRIPTION | SYMBOL |
|---|----------|--|----------|
| Interstate | [Symbol] | Water Body | [Symbol] |
| U.S. Highway | [Symbol] | Swamp or Marsh | [Symbol] |
| State Highway | [Symbol] | Glacier | [Symbol] |
| Other Road | [Symbol] | Military | [Symbol] |
| 4WD Trail, Stoney, Alley, Walkway, or Ferry | [Symbol] | National or State Park, Forest, or Recreation Area | [Symbol] |
| Railroad | [Symbol] | Inset Area | [Symbol] |
| Pipeline or Power Line | [Symbol] | Outside Subject Area | [Symbol] |
| Ridge or Fence | [Symbol] | | |
| Property Line | [Symbol] | | |
| Nonvisible Boundary or Feature Not Elsewhere Classified | [Symbol] | | |

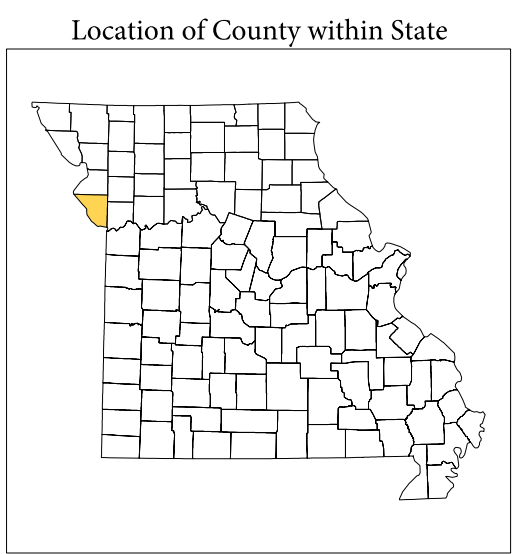
Where state, county, and/or MCD boundaries coincide, the map shows the boundary symbol for only the highest-ranking of these boundaries.

1 A "*" following an MCD name denotes a false MCD. A "*" following a place name indicates that a false MCD exists with the same name and FIPS code as the place; the false MCD label is not shown.

2 MCD boundaries are shown in the following states in which MCDs have functioning governments: Connecticut, Maine, Massachusetts, Michigan, Minnesota, New Hampshire, New Jersey, New York, Pennsylvania, Rhode Island, Vermont, and Wisconsin.

3 Place label color correlates to the place fill color.

| SCHOOL DISTRICTS WITHIN COUNTY | | |
|--------------------------------|-------|--|
| TYPE | CODE | NAME |
| UNI | 11250 | East Buchanan County C-1 School District |
| UNI | 22800 | North Kansas City School District |
| UNI | 22800 | North Platte County R-1 School District |
| UNI | 23550 | Park Hill School District |
| UNI | 25230 | Platte County R-8 School District |
| UNI | 28410 | Smithville School District |
| UNI | 31710 | West Platte County R-1 School District |

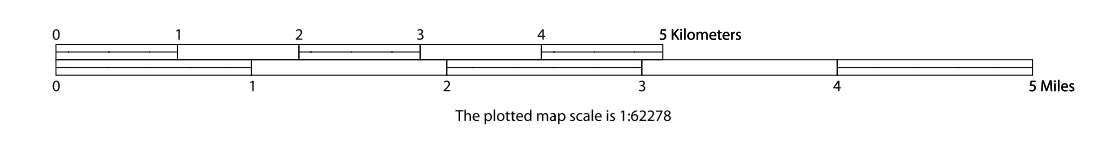


All legal boundaries and names are as of January 1, 2010. The boundaries shown on this map are for Census Bureau statistical data collection and tabulation purposes only; their depiction and designation for statistical purposes does not constitute a determination of jurisdictional authority or rights of ownership or entitlement.

Geographic: Vintage: 2010 Census (reference date: January 1, 2010)
 Data Source: U.S. Census Bureau's MA7/TIGER database (TAB100123)
 Map Created by Geography Division: December 09, 2010

U.S. DEPARTMENT OF COMMERCE Economics and Statistics Administration U.S. Census Bureau

Projection: Albers Equal Area Conic
 Datum: NAD83
 Spheroid: GRS 80
 1st Standard Parallel: 36 45 55
 2nd Standard Parallel: 39 50 38
 Central Meridian: -92 51 50
 Latitude of Projection's Origin: 35 59 44
 False Easting: 0
 False Northing: 0



PARENT SHEET 1
 Total Sheets: 1
 Index Sheets: 0
 Parent Sheets: 1
 Inset Sheets: 0

NAME: Platte County (165)
 ENTITY TYPE: County or statistically equivalent entity
 ST: Missouri (29)