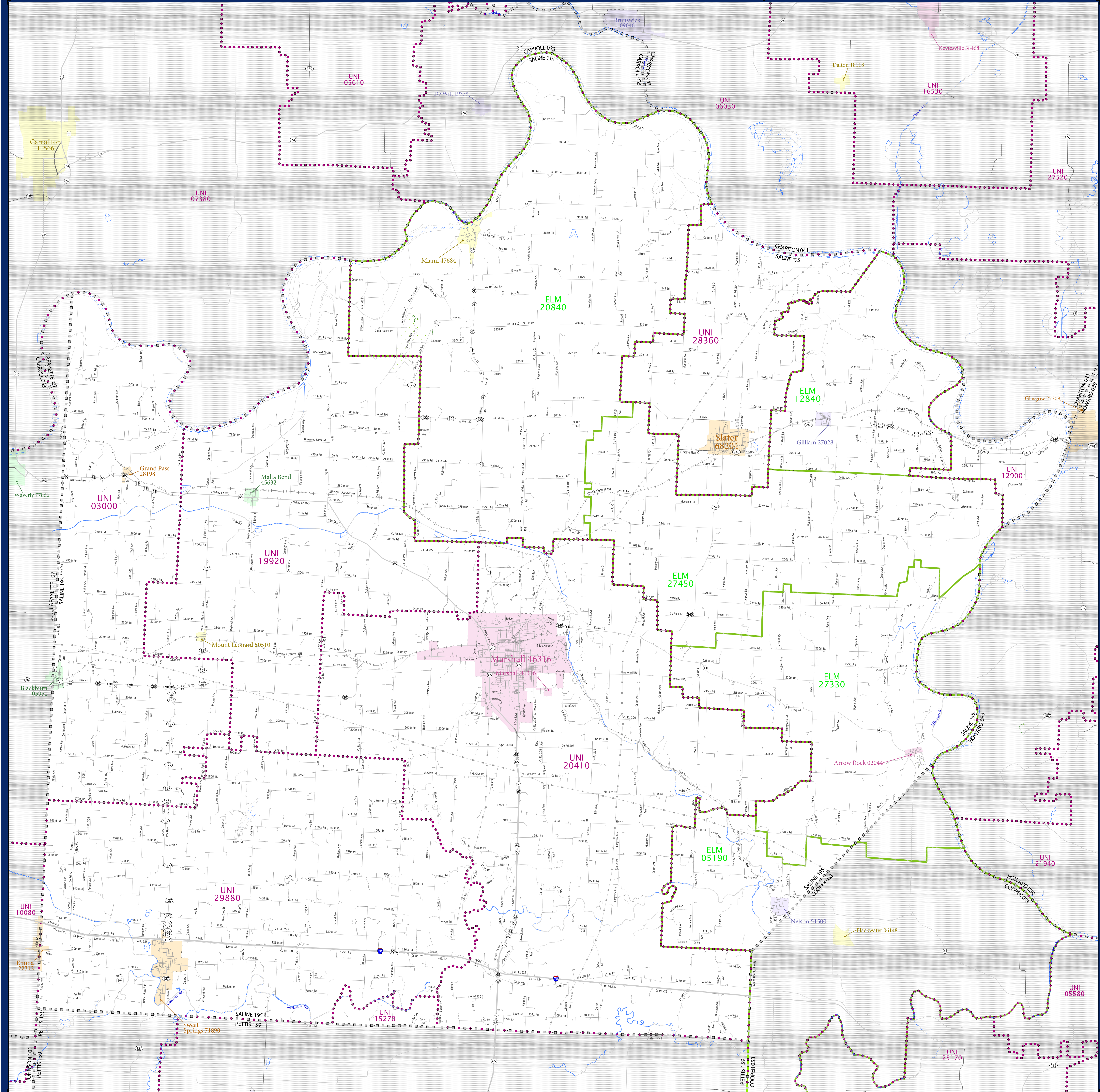


SCHOOL DISTRICT REFERENCE MAP (2010 CENSUS): Saline County, MO



LEGEND

SYMBOL DESCRIPTION	SYMBOL	SYMBOL	SYMBOL
Federal American Indian Reservation	[Dotted pattern]	L'ANSE RES 1880	[Dotted pattern]
Off-Reservation Trust Land	[Dotted pattern]	T1880	[Dotted pattern]
State American Indian Reservation	[Dotted pattern]	Tama Res 4125	[Dotted pattern]
Alaska Native Regional Corporation	[Dotted pattern]	NANA ANRC 52120	[Dotted pattern]
State (or statistically equivalent entity)	[Dotted pattern]	NEW YORK 36	[Dotted pattern]
County (or statistically equivalent entity)	[Dotted pattern]	ERIE 029	[Dotted pattern]
Minor Civil Division (MCD) ^{1,2}	[Dotted pattern]	Bristol town 07485	[Dotted pattern]
Consolidated City	[Dotted pattern]	MILFORD 47500	[Dotted pattern]
Incorporated Place ³	[Dotted pattern]	Davis 18100	[Dotted pattern]
Census Designated Place (CDP) ³	[Dotted pattern]	Inline Village 35100	[Dotted pattern]
Unified School District	[Dotted pattern]	UNI 03370	[Dotted pattern]
Secondary School District	[Dotted pattern]	SEC 99965	[Dotted pattern]
Elementary School District	[Dotted pattern]	ELM 02220	[Dotted pattern]

DESCRIPTION	SYMBOL	DESCRIPTION	SYMBOL
Interstate	[Blue line with red and blue border]	Water Body	[Blue area]
U.S. Highway	[Red line with white border]	Swamp or Marsh	[Green area]
State Highway	[Yellow line with black border]	Glacier	[Blue area]
Other Road	[Grey line]	Military	[Green area]
Other Road	[Grey line]	National or State Park, Forest, or Reservation Area	[Green area]
Railroad	[Black line with cross-ticks]	Inset Area	[Grey area]
Pipeline or Power Line	[Black line with cross-ticks]	Outside Subject Area	[Grey area]
Ridge or Fence	[Black line with cross-ticks]		
Property Line	[Black line with cross-ticks]		
Nonvisible Boundary or Feature Not Elsewhere Classified	[Black line with cross-ticks]		

Where state, county, and/or MCD boundaries coincide, the map shows the boundary symbol for only the highest-ranking of these boundaries.

1 A "*" following an MCD name denotes a false MCD. A "*" following a place name indicates that a false MCD exists with the same name and FIPS code as the place; the false MCD label is not shown.

2 MCD boundaries are shown in the following states in which MCDs have functioning governments: Connecticut, Maine, Massachusetts, Michigan, Minnesota, New Hampshire, New Jersey, New York, Pennsylvania, Rhode Island, Vermont, and Wisconsin.

3 Place label color correlates to the place fill color.

SCHOOL DISTRICTS WITHIN COUNTY

TYPE	CODE	NAME
ELM	02106	Blackwater R-II School District
ELM	12840	Gilliam C-4 School District
ELM	20840	Miami R-II School District
ELM	27130	Hardeman R-X School District
ELM	27450	Oswanville R-II School District
UNI	03000	Santa Fe R-X School District
UNI	12900	Howard County R-II School District
UNI	15270	Pettis County R-IV School District
UNI	19920	Malta Bend R-V School District
UNI	20410	Marshall School District
UNI	28360	Slater School District
UNI	29880	Sweet Springs R-VII School District



All legal boundaries and names are as of January 1, 2010. The boundaries shown on this map are for census bureau statistical data collection and tabulation purposes only; their depiction and designation for statistical purposes does not constitute a determination of jurisdictional authority or rights of ownership or entitlement.

Geographic Vintage: 2010 Census (reference date: January 1, 2010)
 Data Source: U.S. Census Bureau's MAI/TIGER database (TAB100123)
 Map Created by Geography Division: December 09, 2010

U.S. DEPARTMENT OF COMMERCE Economics and Statistics Administration U.S. Census Bureau

Projection: Albers Equal Area Conic
 Datum: NAD83
 Spheroid: GRS 80
 1st Standard Parallel: 36 45 55
 2nd Standard Parallel: 39 50 38
 Central Meridian: -92 51 50
 Latitude of Projection's Origin: 35 59 44
 False Easting: 0
 False Northing: 0

The plotted map scale is 1:81078

10 kilometers
 10 miles

U.S. CENSUS BUREAU

PARENT SHEET 1
 Total Sheets: 1
 Index Sheets: 0
 Parent Sheets: 0
 Inset Sheets: 0

NAME: Saline County (195)
 ENTITY TYPE: County or statistically equivalent entity
 ST: Missouri (29)

2010 SD MAP (PARENT)
 20100105001