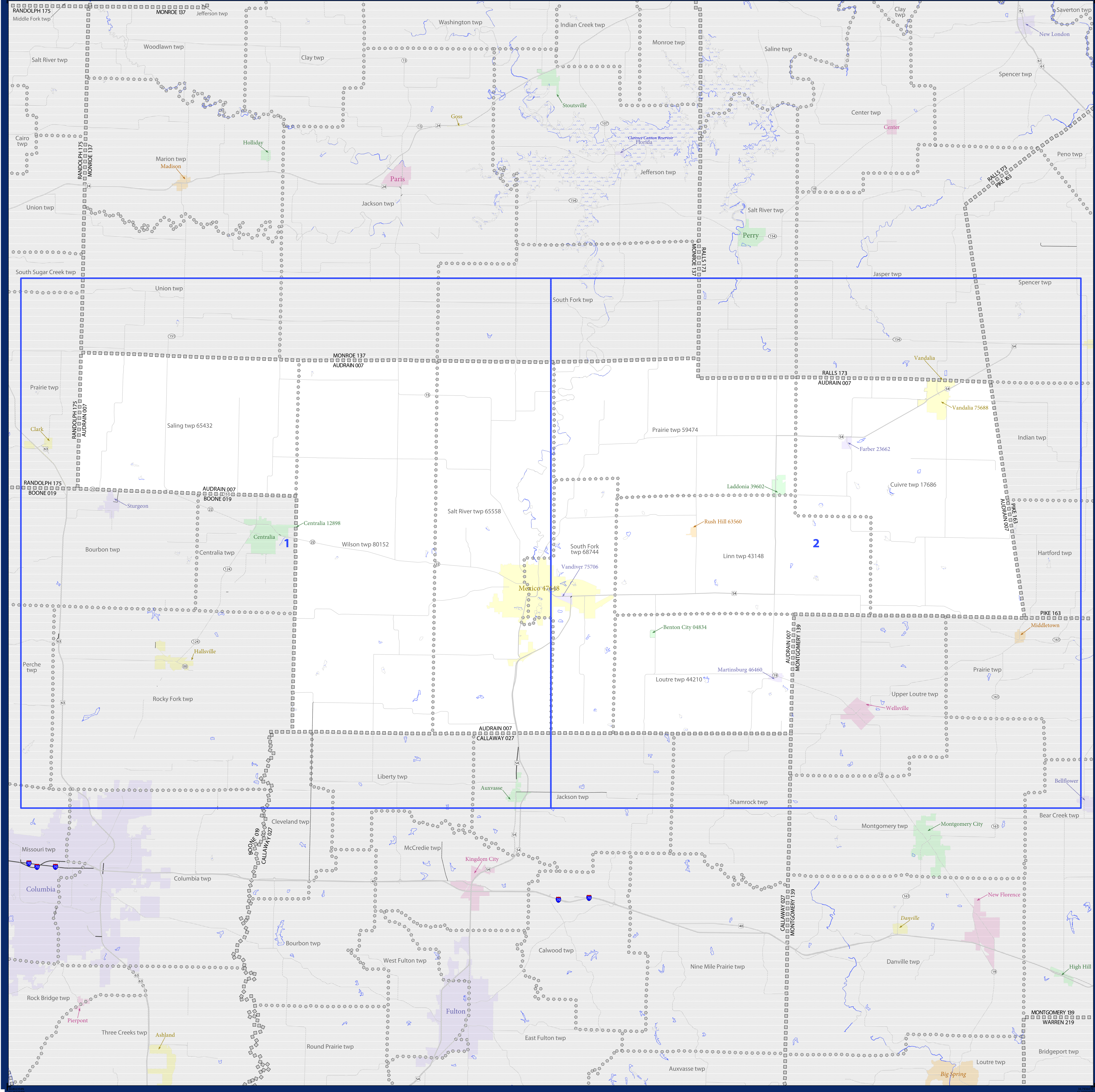


P.L. 94-171 VTD/SLD REFERENCE MAP (2010 CENSUS): Audrain County, MO



LEGEND

SYMBOL DESCRIPTION	SYMBOL	LABEL STYLE
Federal American Indian Reservation	[Symbol]	L'ANSE RES 1880
Off-Reservation Trust Land, Hawaiian Home Land	[Symbol]	T1880
Oklahoma Tribal Statistical Area, Alaska Native Village Statistical Area, Tribal Designated Statistical Area	[Symbol]	KAW OTSA 5340
State American Indian Reservation	[Symbol]	Tama Res 4125
State Designated Tribal Statistical Area	[Symbol]	Lumbee STSA 9815
Alaska Native Regional Corporation	[Symbol]	NANA ANRC 52120
State (or statistically equivalent entity)	[Symbol]	NEW YORK 36
County (or statistically equivalent entity)	[Symbol]	ERIE 029
Minor Civil Division (MCD) ¹	[Symbol]	Bristol town 07485
Census County Division (CCD), Census Tracts (CTA), Unorganized Territory (UT)	[Symbol]	Jemez CCD 91650
Consolidated City	[Symbol]	MILFORD 47500
Incorporated Place ^{1,2}	[Symbol]	Davis 18100
Census Designated Place (CDP) ²	[Symbol]	Incline Village 35100
Voting District (VTD)	[Symbol]	100015
State Legislative District - Upper (Senate)	[Symbol]	SLDU 14
State Legislative District - Lower (House)	[Symbol]	SLDL 26

DESCRIPTION	SYMBOL	DESCRIPTION	SYMBOL
Interstate	[Symbol]	Water Body	[Symbol]
U.S. Highway	[Symbol]	Swamp or Marsh	[Symbol]
State Highway	[Symbol]	Gleicer	[Symbol]
Other Road	[Symbol]	Military	[Symbol]
ATV Trail, Stairs, Alley, Walkway, or Ferry	[Symbol]	National or State Park, Forest, or Recreation Area	[Symbol]
Railroad	[Symbol]	Inset Area	[Symbol]
Pipeline or Power Line	[Symbol]	Outside Subject Area	[Symbol]
Ridge or Fence	[Symbol]		
Property Line	[Symbol]		
Nonvisible Boundary or Feature Not Elsewhere Classified	[Symbol]		

Where state, county, and/or MCD/CCD boundaries coincide, the map shows the boundary symbol for only the highest-ranking of these boundaries.

1 A * following an MCD name denotes a false MCD. A * following a place name indicates that a false MCD exists with the same name and FIPS code as the place; the false MCD label is not shown.

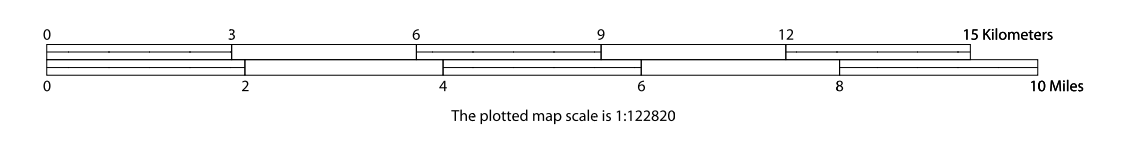
2 Place label color correlates to the place fill color.



All legal boundaries and names are as of January 1, 2010. The boundaries shown on this map are for Census Bureau statistical data collection and tabulation purposes only; their depiction and designation for statistical purposes does not constitute a determination of jurisdictional authority or rights of ownership or entitlement.

Geographic Vintage: 2010 Census (reference date: January 1, 2010)
 Data Source: U.S. Census Bureau's MAINTIGR database (TAB100229)
 Map Created by Geography Division: November 13, 2010

Projection: Albers Equal Area Conic
 Datum: NAD 83
 Spheroid: GRS 80
 1st Standard Parallel: 36 45 55
 2nd Standard Parallel: 39 50 38
 Central Meridian: -92 51 50
 Latitude of Projection's Origin: 35 59 44
 False Easting: 0
 False Northing: 0

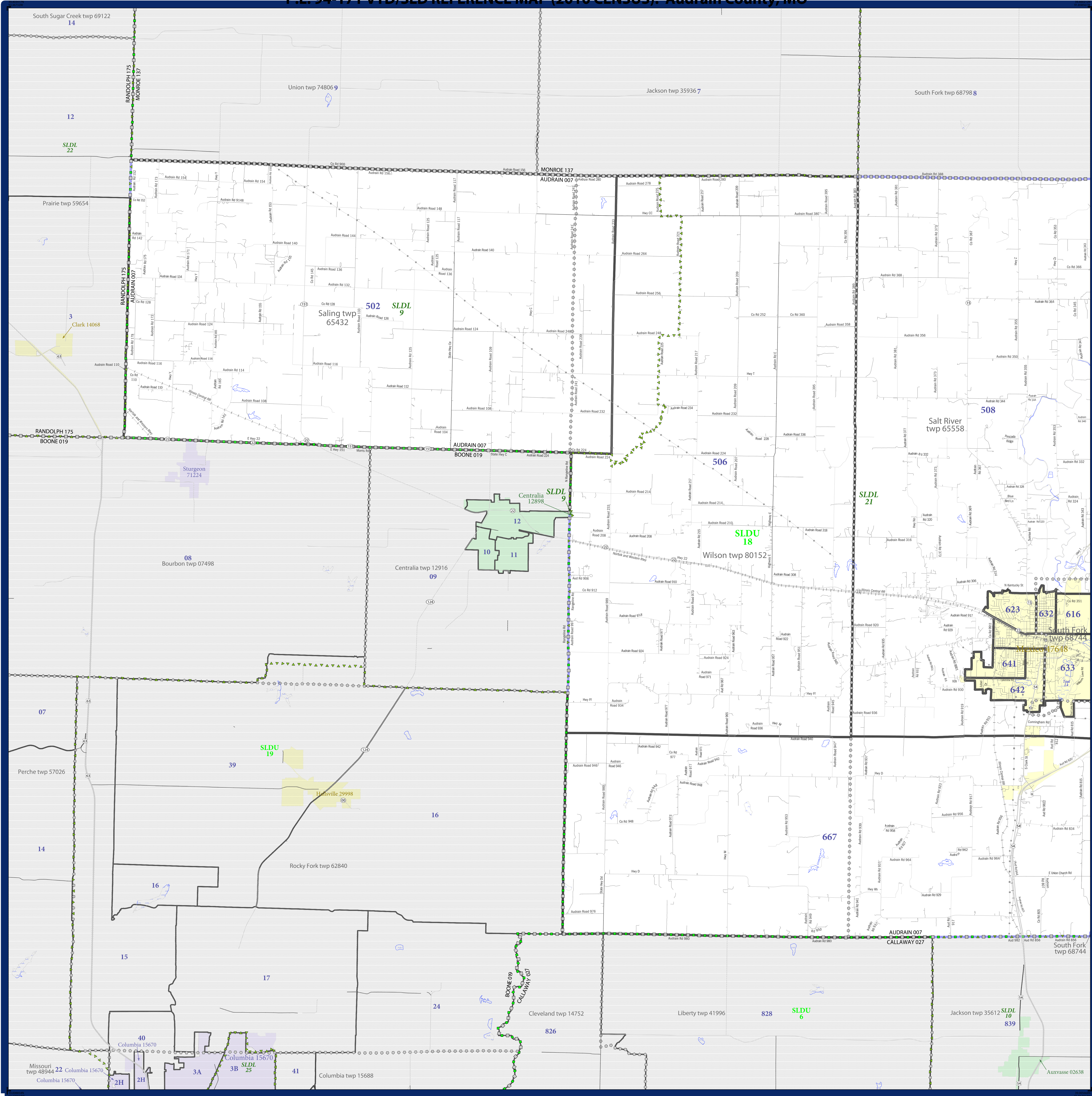


USCENSUSBUREAU

INDEX SHEET
 Total Sheets: 3
 Index Sheets: 1
 Parent Sheets: 2
 Inset Sheets: 0

NAME: Audrain County (007)
 ENTITY TYPE: County or statistically equivalent entity
 ST: Missouri (29)

P.L. 94-171 VTD/SLD REFERENCE MAP (2010 CENSUS): Audrain County, MO



LEGEND

SYMBOL DESCRIPTION	SYMBOL	LABEL STYLE
Federal American Indian Reservation	[Symbol]	L'ANSE RES 1880
Off-Reservation Trust Land, Hawaiian Home Land	[Symbol]	T1880
Oklahoma Tribal Statistical Area, Alaska Native Village Statistical Area, Tribal Designated Statistical Area	[Symbol]	KAW OTSA 5340
State American Indian Reservation	[Symbol]	Tama Res 4125
State Designated Tribal Statistical Area	[Symbol]	Lumbee STSA 9815
Alaska Native Regional Corporation	[Symbol]	NANA ANRC 52120
State (or statistically equivalent entity)	[Symbol]	NEW YORK 36
County (or statistically equivalent entity)	[Symbol]	ERIE 029
Minor Civil Division (MCD) ¹	[Symbol]	Bristol town 07485
Census County Division (CCD), Census Subarea (CSA), Unincorporated Territory (UT)	[Symbol]	Jemez CCD 91650
Consolidated City	[Symbol]	MILFORD 47500
Incorporated Place ^{1,2}	[Symbol]	Davis 18100
Census Designated Place (CDP) ²	[Symbol]	Incline Village 35100
Voting District (VTD)	[Symbol]	100015
State Legislative District - Upper (Senate)	[Symbol]	SLDU 14
State Legislative District - Lower (House)	[Symbol]	SLDL 26

DESCRIPTION	SYMBOL	DESCRIPTION	SYMBOL
Interstate	[Symbol]	Water Body	[Symbol]
U.S. Highway	[Symbol]	Swamp or Marsh	[Symbol]
State Highway	[Symbol]	Glacier	[Symbol]
Other Road	[Symbol]	Military	[Symbol]
AWD Trail, Scurry, Alter, Walkway, or Ferry	[Symbol]	National or State Park, Forest, or Recreation Area	[Symbol]
Railroad	[Symbol]	Inset Area	[Symbol]
Pipeline or Power Line	[Symbol]	Outside Subject Area	[Symbol]
Ridge or Fence	[Symbol]		
Property Line	[Symbol]		
Nonvisible Boundary or Feature Not Elsewhere Classified	[Symbol]		

Where state, county, and/or MCD/CCD boundaries coincide, the map shows the boundary symbol for only the highest-ranking of these boundaries.

1 A * following an MCD name denotes a false MCD. A * following a place name indicates that a false MCD exists with the same name and FIPS code as the place; the false MCD label is not shown.

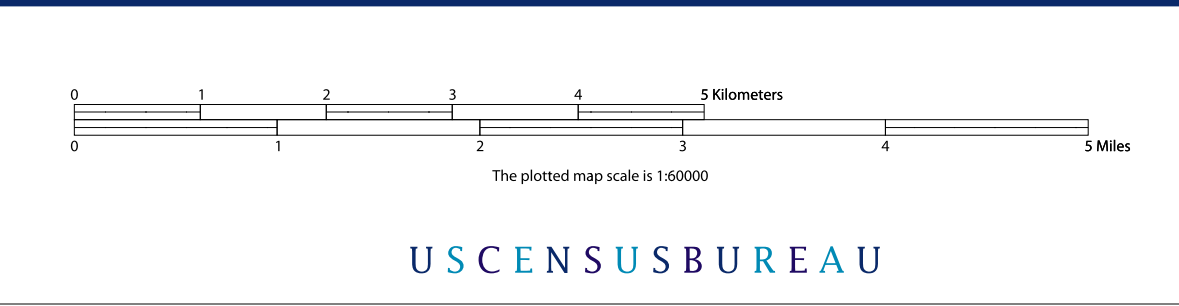
2 Place label color correlates to the place fill color.

All legal boundaries and names are as of January 1, 2010. The boundaries shown on this map are for Census Bureau statistical data collection and tabulation purposes only; their depiction and designation for statistical purposes does not constitute a determination of jurisdictional authority or rights of ownership or entitlement.

Geographic Vintage: 2010 Census (reference date: January 1, 2010)
 Data Source: U.S. Census Bureau's MAI/TIGER database (TAB100123)
 Map Created by Geography Division: November 13, 2010

U.S. DEPARTMENT OF COMMERCE Economics and Statistics Administration U.S. Census Bureau

Projection: Albers Equal Area Conic
 Datum: NAD83
 Spheroid: GRS 80
 1st Standard Parallel: 36 45 55
 2nd Standard Parallel: 39 50 38
 Central Meridian: -92 51 50
 Latitude of Projection's Origin: 35 59 44
 False Easting: 0
 False Northing: 0



Key to Sheets

1	2
---	---

PARENT SHEET 1
 Total Sheets: 3
 Index Sheets: 1
 Parent Sheets: 2
 Inset Sheets: 0

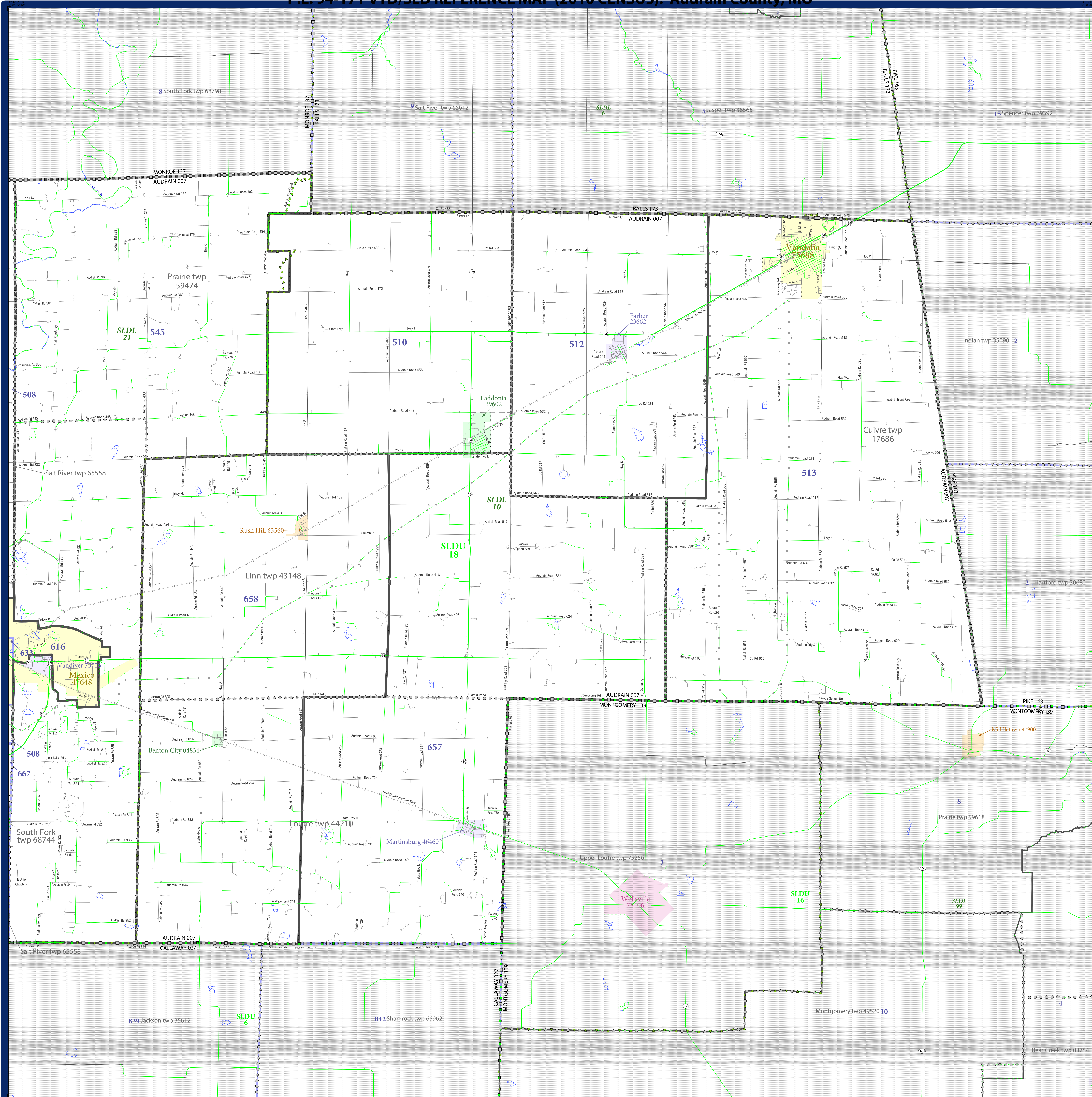
Location of County within State

Sheet Location within Entity

NAME: Audrain County (007)
 ENTITY TYPE: County or statistically equivalent entity
 ST: Missouri (29)

2010 PL VTD/SLD MAP (PARENT)
 201007001

P.L. 94-171 VTD/SLD REFERENCE MAP (2010 CENSUS): Audrain County, MO



LEGEND

SYMBOL DESCRIPTION	SYMBOL	LABEL STYLE
Federal American Indian Reservation		L'ANSE RES 1880
Off-Reservation Trust Land, Hawaiian Home Land		T1880
Oklahoma Tribal Statistical Area, Indian Village Statistical Area, Tribal Designated Statistical Area		KAW OTSA 5340
State American Indian Reservation		Tama Res 4125
State Designated Tribal Statistical Area		Lumbee STSA 9815
Alaska Native Regional Corporation		NANA ANRC 52120
State (or statistically equivalent entity)		NEW YORK 36
County (or statistically equivalent entity)		ERIE 029
Minor Civil Division (MCD) ¹		Bristol town 07485
Census County Division (CCD), Census Bureau (CSA), Unorganized Territory (UT)		Jemez CCD 91650
Consolidated City		MILFORD 47500
Incorporated Place ^{1,2}		Davis 18100
Census Designated Place (CDP) ²		Incline Village 35100
Voting District (VTD)		100015
State Legislative District - Upper (Senate)		SLDU 14
State Legislative District - Lower (House)		SLDL 26

DESCRIPTION	SYMBOL	DESCRIPTION	SYMBOL
Interstate		Water Body	
U.S. Highway		Swamp or Marsh	
State Highway		Golcher	
Other Road		Military	
Other Road		National or State Park, Forest, or Recreation Area	
4013 Trust Streets, Alley, Walkway, or Ferry		Inlet Area	
Railroad		Outside Subject Area	
Pipeline or Power Line			
Ridge or Fence			
Property Line			
Nonmunicipal Boundary or Feature Not Elsewhere Classified			

Where state, county, and/or MCD/CCD boundaries coincide, the map shows the boundary symbol for only the highest-ranking of these boundaries.
 1 A * following an MCD name denotes a false MCD. A * following a place name indicates that a false MCD exists with the same name and FIPS code as the place; the false MCD label is not shown.
 2 Place label color correlates to the place fill color.

Location of County within State

Sheet Location within Entity

All legal boundaries and names are as of January 1, 2010. The boundaries shown on this map are for Census Bureau statistical data collection and tabulation purposes only; their depiction and designation for statistical purposes does not constitute a determination of jurisdictional authority or rights of ownership or entitlement.
 Geographic: Vintage: 2010 Census (reference date: January 1, 2010)
 Data Source: U.S. Census Bureau's MAINTREG database (TAB100123)
 Map Created by Geography Division: November 13, 2010
 U.S. DEPARTMENT OF COMMERCE Economics and Statistics Administration U.S. Census Bureau

Projection: Albers Equal Area Conic
 Datum: NAD 83
 Spheroid: GRS 80
 1st Standard Parallel: 36 45 55
 2nd Standard Parallel: 39 50 38
 Central Meridian: -92 51 50
 Latitude of Projection's Origin: 35 59 44
 False Easting: 0
 False Northing: 0

Key to Sheets

1	2
---	---

PARENT SHEET 2
 Total Sheets: 3
 Index Sheets: 1
 Parent Sheets: 2
 Inset Sheets: 0

NAME: Audrain County (007)
 ENTITY TYPE: County or statistically equivalent entity
 ST: Missouri (29)

2010 PL VTD/SLD MAP (PARENT) 2010090102

USCENSUSBUREAU