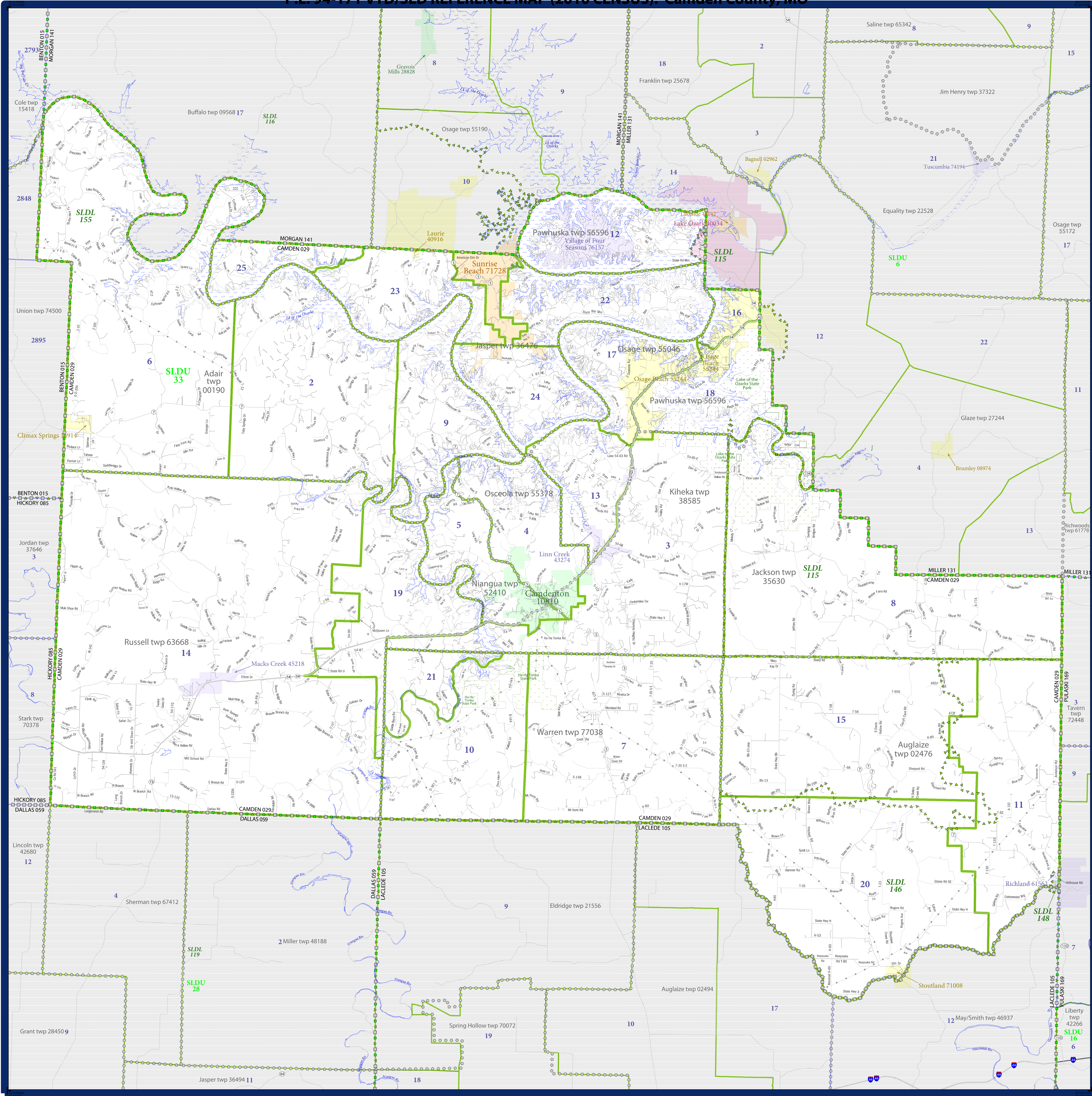


P.L. 94-171 VTD/SLD REFERENCE MAP (2010 CENSUS): Camden County, MO



LEGEND

SYMBOL DESCRIPTION	SYMBOL	LABEL STYLE
Federal American Indian Reservation	[Dotted pattern]	L'ANSE RES 1880
Off-Reservation Trust Land, Hawaiian Home Land	[Dotted pattern]	T1880
Oklahoma Tribal Statistical Area, Alaska Native Village Statistical Area, Tribal Designated Statistical Area	[Dotted pattern]	KAW OTSA 5340
State American Indian Reservation	[Dotted pattern]	Tama Res 4125
State Designated Tribal Statistical Area	[Dotted pattern]	Lumbee STSA 9815
Alaska Native Regional Corporation	[Dotted pattern]	NANA ANRC 52120
State (or statistically equivalent entity)	[Dotted pattern]	NEW YORK 36
County (or statistically equivalent entity)	[Dotted pattern]	ERIE 029
Minor Civil Division (MCD) ¹	[Dotted pattern]	Bristol town 07485
Census County Division (CCD), Census Tracts (CTA), Unincorporated Territory (UT)	[Dotted pattern]	Jemez CCD 91650
Consolidated City	[Dotted pattern]	MILFORD 47500
Incorporated Place ^{1,2}	[Dotted pattern]	Davis 18100
Census Designated Place (CDP) ¹	[Dotted pattern]	Incline Village 35100
Voting District (VTD)	[Dotted pattern]	100015
State Legislative District - Upper (Senate)	[Dotted pattern]	SLDU 14
State Legislative District - Lower (House)	[Dotted pattern]	SLDL 26

DESCRIPTION	SYMBOL	DESCRIPTION	SYMBOL
Inertant	[Symbol]	Water Body	[Symbol]
U.S. Highway	[Symbol]	Swamp or Marsh	[Symbol]
State Highway	[Symbol]	Gleicer	[Symbol]
Other Road	[Symbol]	Military	[Symbol]
4011 Trunk Streets, Alley, Walkway or Ferry	[Symbol]	National or State Park, Forest, or Recreation Area	[Symbol]
Railroad	[Symbol]	Inset Area	[Symbol]
Pipeline or Power Line	[Symbol]	Outside Subject Area	[Symbol]
Ridge or Fence	[Symbol]		
Property Line	[Symbol]		
Nonviable Boundary or Feature Not Elsewhere Classified	[Symbol]		

Where state, county, and/or MCD/CCD boundaries coincide, the map shows the boundary symbol for only the highest-ranking of these boundaries.

1 A * following an MCD name denotes a false MCD. A * following a place name indicates that a false MCD exists with the same name and FIPS code as the place; the false MCD label is not shown.

2 Place label color correlates to the place fill color.

Location of County within State

PARENT SHEET 1
 Total Sheets: 1
 Index Sheets: 0
 Parent Sheets: 1
 Inset Sheets: 0

NAME: Camden County (029)
 ENTITY TYPE: County or statistically equivalent entity
 ST: Missouri (29)

All legal boundaries and names are as of January 1, 2010. The boundaries shown on this map are for Census Bureau statistical data collection and tabulation purposes only; their depiction and designation for statistical purposes does not constitute a determination of jurisdictional authority or rights of ownership or entitlement.

Geographic: Vintage: 2010 Census (reference date: January 1, 2010)
 Data Source: U.S. Census Bureau's MAINTIGR database (TAB100129)
 Map Created by Geography Division: November 14, 2010

U.S. DEPARTMENT OF COMMERCE Economics and Statistics Administration U.S. Census Bureau

Projection: Albers Equal Area Conic
 Datum: NAD 83
 Spheroid: GRS 80
 1st Standard Parallel: 36 45 55
 2nd Standard Parallel: 39 50 38
 Central Meridian: -92 51 50
 Latitude of Projection's Origin: 35 59 44
 False Easting: 0
 False Northing: 0

The plotted map scale is 1:8562

0 2 4 6 8 10 Kilometers

0 2 4 6 8 10 Miles

U.S. CENSUS BUREAU

2010 PL VTD/SLD MAP (PARENT) 2010020001