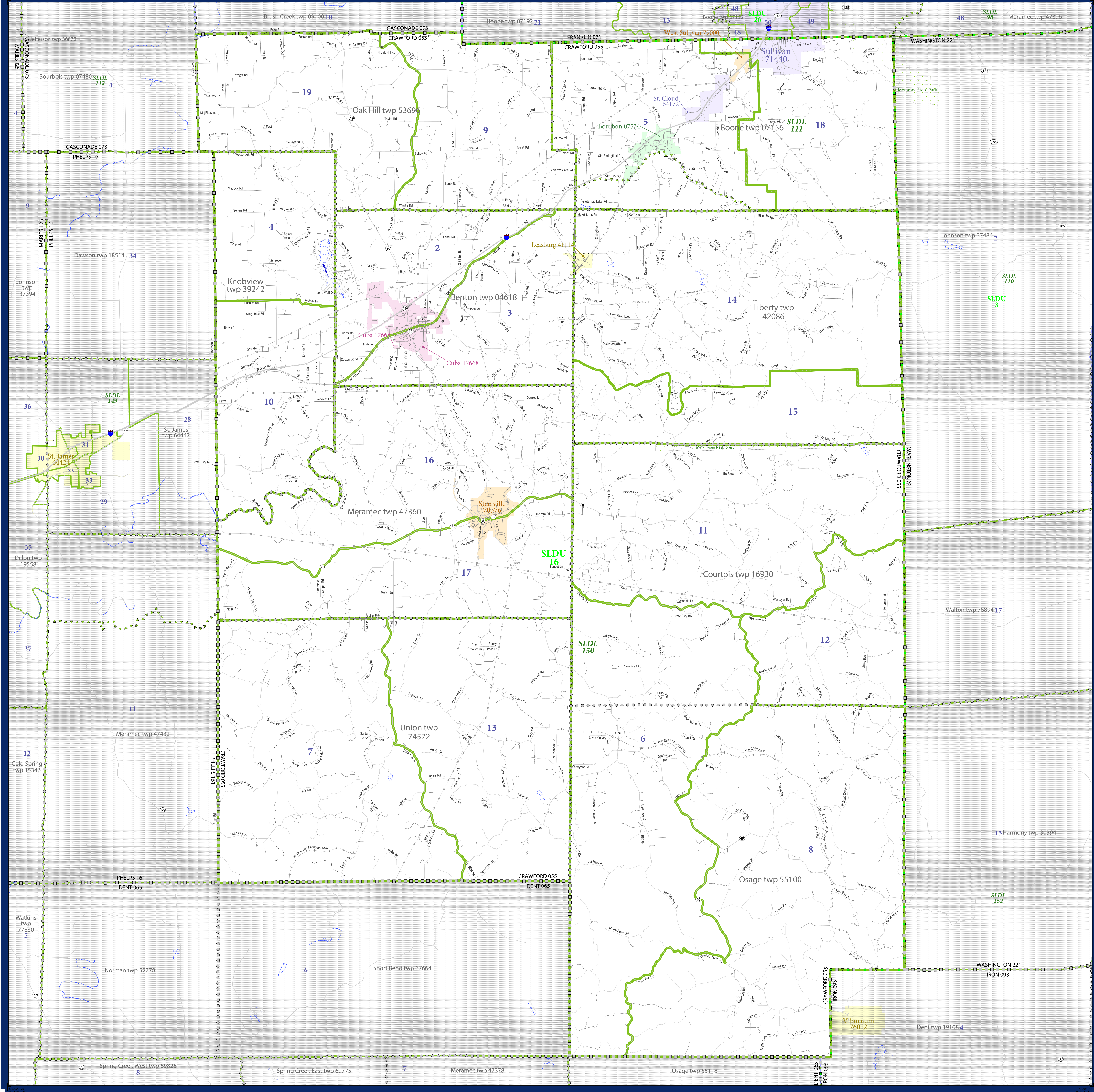


P.L. 94-171 VTD/SLD REFERENCE MAP (2010 CENSUS): Crawford County, MO



LEGEND

SYMBOL DESCRIPTION	SYMBOL	SYMBOL	SYMBOL
Federal American Indian Reservation	[Dotted pattern]	L'ANSE RES 1880	[Dotted pattern]
Off-Reservation Trust Land, Hawaiian Home Land	[Dotted pattern]	T1880	[Dotted pattern]
Oklahoma Tribal Statistical Area, Alaska Native Village Statistical Area, Tribal Designated Statistical Area	[Dotted pattern]	KAW OTSA 5340	[Dotted pattern]
State American Indian Reservation	[Dotted pattern]	Tama Res 4125	[Dotted pattern]
State Designated Tribal Statistical Area	[Dotted pattern]	Lumbee STSA 9815	[Dotted pattern]
Alaska Native Regional Corporation	[Dotted pattern]	NANA ANRC 52120	[Dotted pattern]
State (or statistically equivalent entity)	[Dashed line]	NEW YORK 36	[Dashed line]
County (or statistically equivalent entity)	[Dashed line]	ERIE 029	[Dashed line]
Minor Civil Division (MCD) ¹	[Dotted pattern]	Bristol town 07485	[Dotted pattern]
Census County Division (CCD), Census Tracts (CTA), Unorganized Territory (UT)	[Dotted pattern]	Jemez CCD 91650	[Dotted pattern]
Consolidated City	[Dotted pattern]	MILFORD 47500	[Dotted pattern]
Incorporated Place ^{1,2}	[Color fill]	Davis 18100	[Color fill]
Census Designated Place (CDP) ²	[Color fill]	Incline Village 35100	[Color fill]
Voting District (VTD)	[Color fill]	100015	[Color fill]
State Legislative District - Upper (Senate)	[Color fill]	SLDU 14	[Color fill]
State Legislative District - Lower (House)	[Color fill]	SLDL 26	[Color fill]
Interstate	[Thick solid line]	Water Body	[Blue fill]
U.S. Highway	[Thin solid line]	Swamp or Marsh	[Light blue fill]
State Highway	[Thin solid line]	Glacier	[Light blue fill]
Other Road	[Thin solid line]	Military	[Light blue fill]
4011 Test Sources: Aho, Walker, or Ferry	[Thin solid line]	National or State Park, Forest, or Recreation Area	[Light green fill]
Railroad	[Thin solid line]	Inset Area	[Light green fill]
Pipeline or Power Line	[Thin solid line]	Outside Subject Area	[Light green fill]
Ridge or Fence	[Thin solid line]		
Property Line	[Thin solid line]		
Nonvisible Boundary or Feature See Elsewhere Classified	[Thin solid line]		

Where state, county, and/or MCD/CCD boundaries coincide, the map shows the boundary symbol for only the highest-ranking of these boundaries.

1 A * following an MCD name denotes a false MCD. A ** following a place name indicates that a false MCD exists with the same name and FIPS code as the place; the false MCD label is not shown.

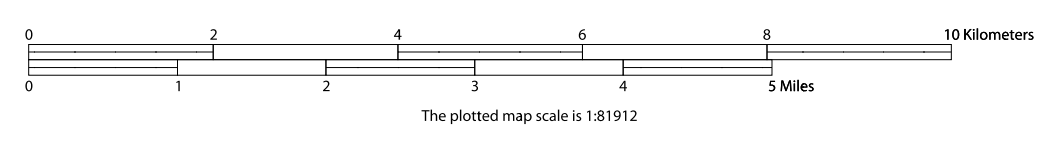
2 Place label color correlates to the place fill color.



All legal boundaries and names are as of January 1, 2010. The boundaries shown on this map are for Census Bureau statistical data collection and tabulation purposes only; their depiction and designation for statistical purposes does not constitute a determination of jurisdictional authority or rights of ownership or entitlement.

Geographic: Vintage: 2010 Census (reference date: January 1, 2010)
 Data Source: U.S. Census Bureau's MAINTIGR database (TAB10ST29)
 Map Created by Geography Division: November 14, 2010

Projection: Albers Equal Area Conic
 Datum: NAD 83
 Spheroid: GRS 80
 1st Standard Parallel: 36 45 55
 2nd Standard Parallel: 39 50 38
 Central Meridian: -92 51 50
 Latitude of Projection's Origin: 35 59 44
 False Easting: 0
 False Northing: 0



PARENT SHEET 1
 Total Sheets: 1
 Index Sheets: 0
 Parent Sheets: 1
 Inset Sheets: 0

NAME: Crawford County (055)
 ENTITY TYPE: County or statistically equivalent entity
 ST: Missouri (29)