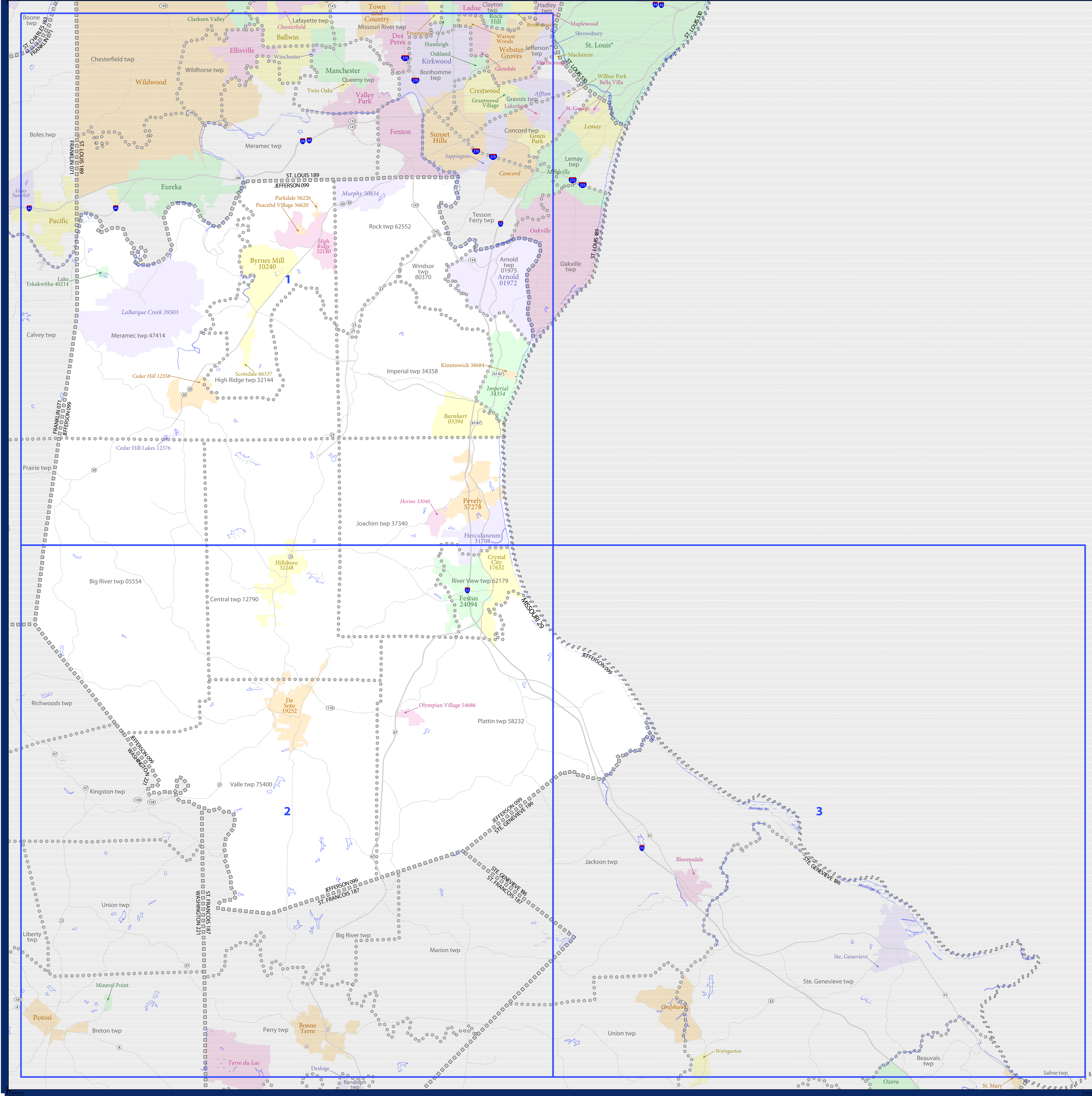


P.L. 94-171 VTD/SLD REFERENCE MAP (2010 CENSUS): Jefferson County, MO



LEGEND

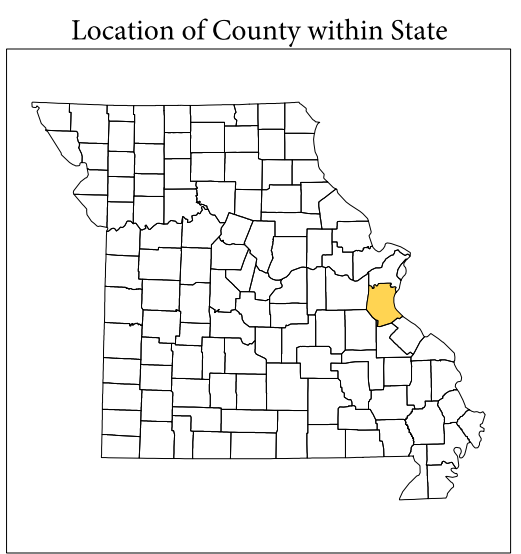
SYMBOL DESCRIPTION	SYMBOL	LABEL STYLE
Federal American Indian Reservation	[Symbol]	L'ANSE RES 1880
Off-Reservation Trust Land, Hawaiian Home Land	[Symbol]	T1880
Oklahoma Tribal Statistical Area, Alaska Native Regional Statistical Area	[Symbol]	KAW OTSA 5340
State American Indian Reservation	[Symbol]	Tama Res 4125
State Designated Tribal Statistical Area	[Symbol]	Lumbee STSA 9815
Alaska Native Regional Corporation	[Symbol]	NANA ANRC 52120
State (or statistically equivalent entity)	[Symbol]	NEW YORK 36
County (or statistically equivalent entity)	[Symbol]	ERIE 029
Minor Civil Division (MCD) ¹	[Symbol]	Bristol town 07485
Census County Division (CCD), Census Subarea (CSA), Unorganized Territory (UT)	[Symbol]	Jemez CCD 91650
Consolidated City	[Symbol]	MILFORD 47500
Incorporated Place ^{1,2}	[Symbol]	Davis 18100
Census Designated Place (CDP) ²	[Symbol]	Incline Village 35100
Voting District (VTD)	[Symbol]	100015
State Legislative District - Upper (Senate)	[Symbol]	SLDU 14
State Legislative District - Lower (House)	[Symbol]	SLDL 26

DESCRIPTION	SYMBOL	DESCRIPTION	SYMBOL
Inertant	[Symbol]	Water Body	[Symbol]
U.S. Highway	[Symbol]	Swamp or Marsh	[Symbol]
State Highway	[Symbol]	Gleicer	[Symbol]
Other Road	[Symbol]	Military	[Symbol]
ATV Trail, Staircase, Airstrip, Walkway, or Ferry	[Symbol]	National or State Park, Forest, or Recreation Area	[Symbol]
Railroad	[Symbol]	Inset Area	[Symbol]
Pipeline or Power Line	[Symbol]	Outside Subject Area	[Symbol]
Ridge or Fence	[Symbol]		
Property Line	[Symbol]		
Nonvisible Boundary or Feature Not Elsewhere Classified	[Symbol]		

Where state, county, and/or MCD/CCD boundaries coincide, the map shows the boundary symbol for only the highest-ranking of these boundaries.

1 A "*" following an MCD name denotes a false MCD. A "*" following a place name indicates that a false MCD exists with the same name and FIPS code as the place; the false MCD label is not shown.

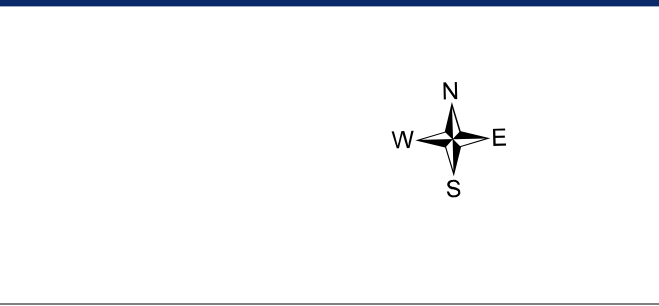
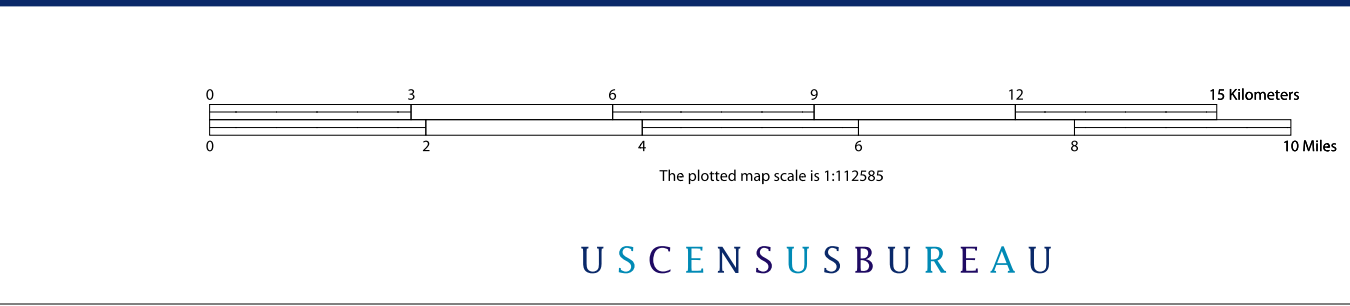
2 Place label color correlates to the place fill color.



All legal boundaries and names are as of January 1, 2010. The boundaries shown on this map are for Census Bureau's statistical data collection and tabulation purposes only; their depiction and designation for statistical purposes does not constitute a determination of jurisdictional authority or rights of ownership or entitlement.

Geographic Vintage: 2010 Census (reference date: January 1, 2010)
 Data Source: U.S. Census Bureau's MAINTIGR database (TAB100122)
 Map Created by Geography Division: November 14, 2010

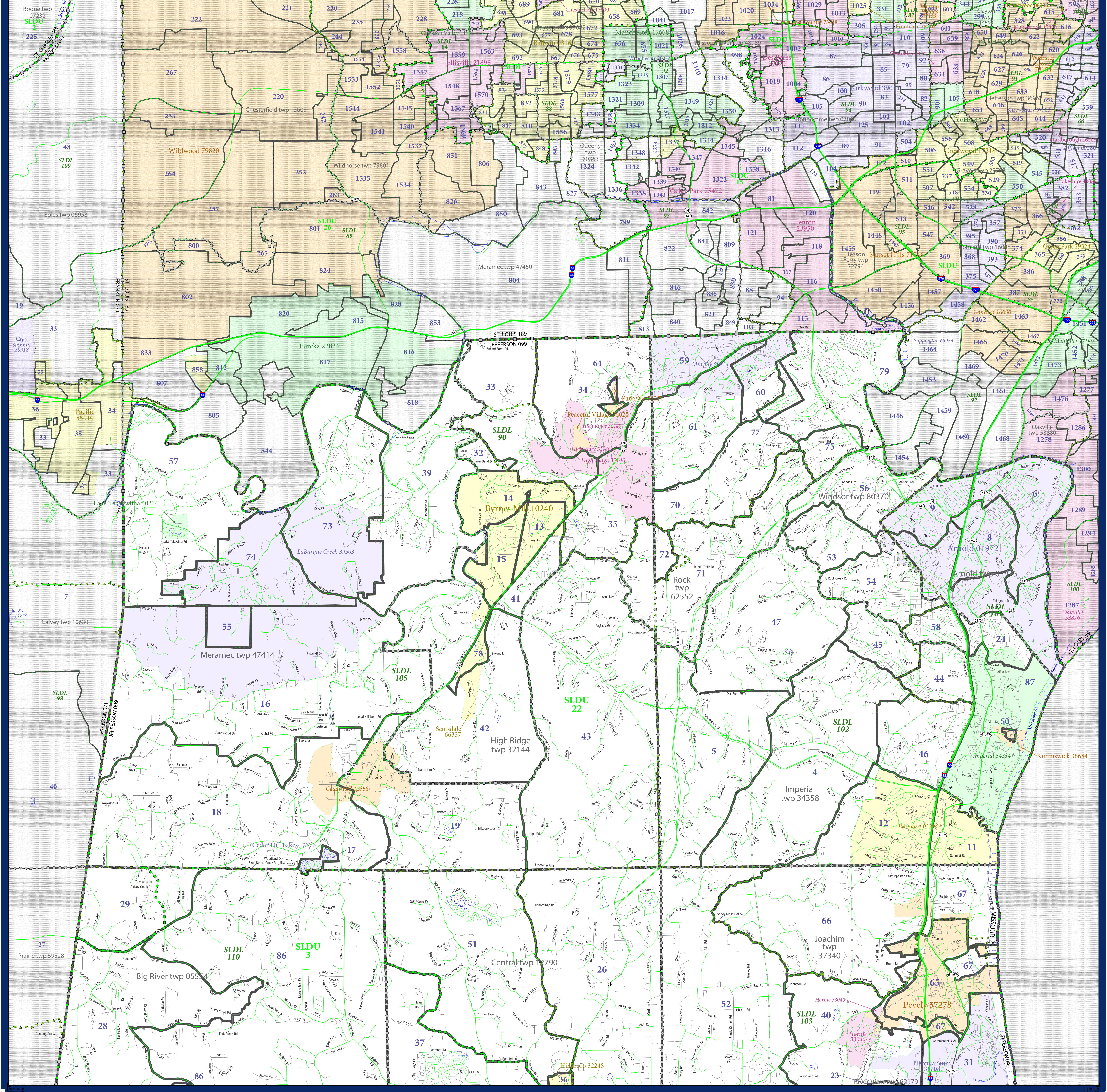
Projection: Albers Equal Area Conic
 Datum: NAD 83
 Spheroid: GRS 80
 1st Standard Parallel: 36 45 55
 2nd Standard Parallel: 39 50 38
 Central Meridian: -92 51 50
 Latitude of Projection's Origin: 35 59 44
 False Easting: 0
 False Northing: 0



INDEX SHEET
 Total Sheets: 4
 Index Sheets: 1
 Parent Sheets: 3
 Inset Sheets: 0

NAME: Jefferson County (099)
 ENTITY TYPE: County or statistically equivalent entity
 ST: Missouri (29)

P.L. 94-171 VTD/SLD REFERENCE MAP (2010 CENSUS): Jefferson County, MO



LEGEND

SYMBOL DESCRIPTION	SYMBOL	LABEL STYLE
Federal American Indian Reservation	[Dotted pattern]	L'ANSE RES 1880
Off-Reservation Trust Land, Hawaiian Home Land	[Dotted pattern]	T1880
Oklahoma Tribal Statistical Area, Alaska Native Village Statistical Area, Tribal Designated Statistical Area	[Dotted pattern]	KAW OTSA 5340
State American Indian Reservation	[Dotted pattern]	Tama Res 4125
State Designated Tribal Statistical Area	[Dotted pattern]	Lumbee STSA 9815
Alaska Native Regional Corporation	[Dotted pattern]	NANA ANRC 52120
State (or statistically equivalent entity)	[Thick solid line]	NEW YORK 36
County (or statistically equivalent entity)	[Thin solid line]	ERIE 029
Minor Civil Division (MCD) ¹	[Dashed line]	Bristol town 07485
Census County Division (CCD), Census Subarea (CSA), Unincorporated Territory (UT)	[Dotted line]	Jemez CCD 91650
Consolidated City	[Thick solid line]	MILFORD 47500
Incorporated Place ²	[Thick solid line]	Davis 18100
Census Designated Place (CDP) ²	[Thick solid line]	Incline Village 35100
Voting District (VTD)	[Thick solid line]	100015
State Legislative District - Upper (Senate)	[Thick solid line]	SLDU 14
State Legislative District - Lower (House)	[Thick solid line]	SLDL 26

DESCRIPTION	SYMBOL	DESCRIPTION	SYMBOL
Interstate	[Thick solid line]	Water Body	[Blue wavy line]
U.S. Highway	[Thin solid line]	Swamp or Marsh	[Blue wavy line]
State Highway	[Thin solid line]	Glacier	[Blue wavy line]
Other Road	[Thin solid line]	Military	[Blue wavy line]
ATV Trail, Scurry, Alley, Walkway, or Ferry	[Thin solid line]	National or State Park, Forest, or Recreation Area	[Blue wavy line]
Railroad	[Thin solid line]	Inset Area	[Blue wavy line]
Pipeline or Power Line	[Thin solid line]	Outside Subject Area	[Blue wavy line]
Ridge or Fence	[Thin solid line]		
Property Line	[Thin solid line]		
Nonvisible Boundary or Feature Not Elsewhere Classified	[Thin solid line]		

Where state, county, and/or MCD/CCD boundaries coincide, the map shows the boundary symbol for only the highest-ranking of these boundaries.

1 A * following an MCD name denotes a false MCD. A * following a place name indicates that a false MCD exists with the same name and FIPS code as the place; the false MCD label is not shown.

2 Place label color correlates to the place fill color.

All legal boundaries and names are as of January 1, 2010. The boundaries shown on this map are for Census Bureau statistical data collection and tabulation purposes only; their depiction and designation for statistical purposes does not constitute a determination of jurisdictional authority or rights of ownership or entitlement.

Geographic: Vintage: 2010 Census (reference date: January 1, 2010)
 Data Source: U.S. Census Bureau's MAINTIGR database (TAB100122)
 Map Created by Geography Division: November 14, 2010

U.S. DEPARTMENT OF COMMERCE Economics and Statistics Administration U.S. Census Bureau

Projection: Albers Equal Area Conic
 Datum: NAD 83
 Spheroid: GRS 80
 1st Standard Parallel: 36 45 55
 2nd Standard Parallel: 39 50 30
 Central Meridian: -92 51 50
 Latitude of Projection's Origin: 35 59 44
 False Easting: 0
 False Northing: 0

The plotted map scale is 1:50000

U.S. CENSUS BUREAU

Key to Sheets

1	2	3
---	---	---

PARENT SHEET 1
 Total Sheets: 4
 Index Sheets: 1
 Parent Sheets: 3
 Inset Sheets: 0

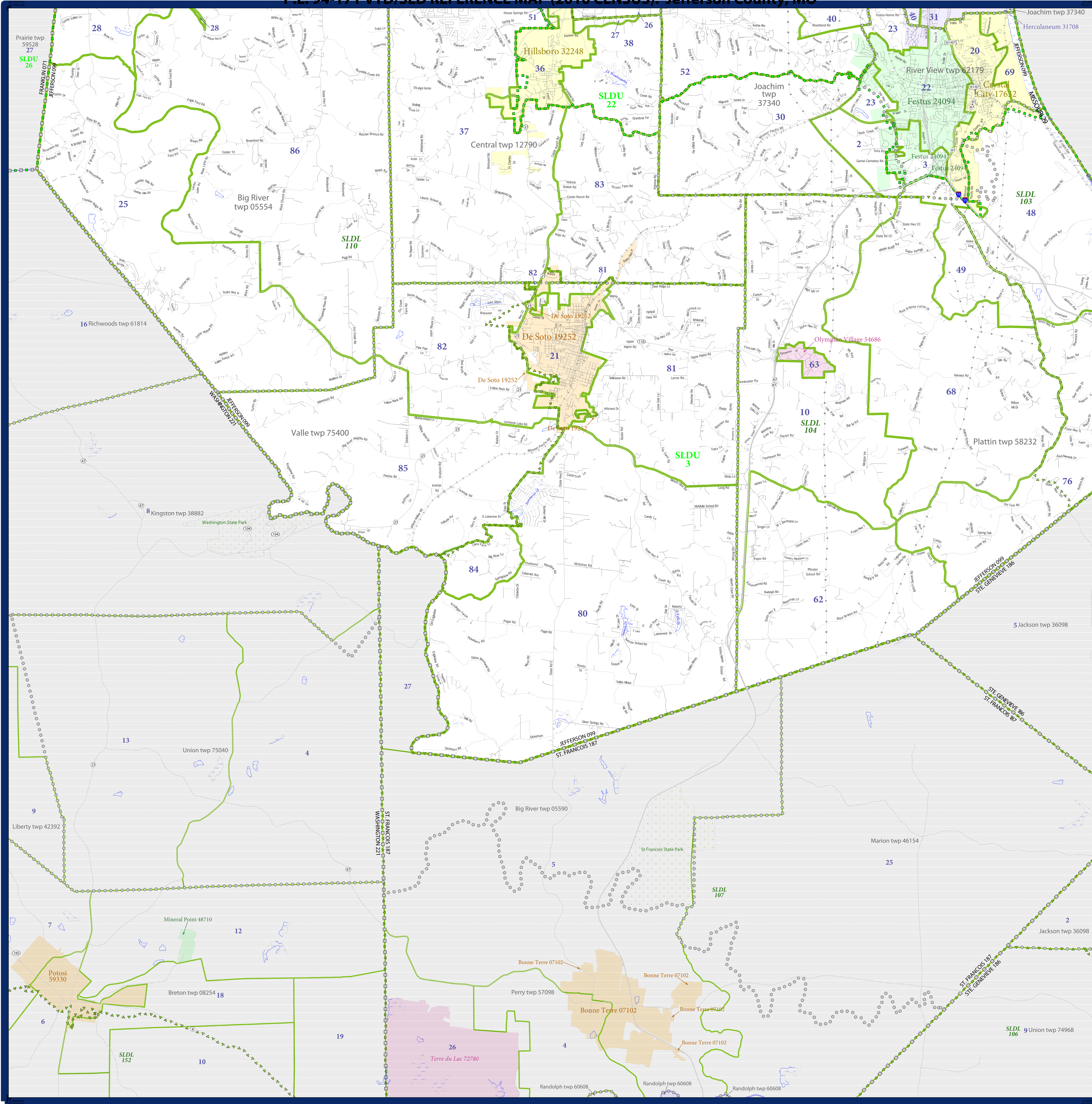
Location of County within State

Sheet Location within Entity

NAME: Jefferson County (099)
 ENTITY TYPE: County or statistically equivalent entity
 ST: Missouri (29)

2010 PL VTD/SLD MAP (PARENT)
 2011 0909001

P.L. 94-171 VTD/SLD REFERENCE MAP (2010 CENSUS): Jefferson County, MO



LEGEND

SYMBOL DESCRIPTION	SYMBOL	LABEL STYLE
Federal American Indian Reservation	[Dotted pattern]	L'ANSE RES 1880
Off-Reservation Trust Land, Hawaiian Home Land	[Dotted pattern]	T1880
Oklahoma Tribal Statistical Area, Alaska Native Village Statistical Area, Tribal Designated Statistical Area	[Dotted pattern]	KAW OTSA 5340
State American Indian Reservation	[Dotted pattern]	Tama Res 4125
State Designated Tribal Statistical Area	[Dotted pattern]	Lumbee STSA 9815
Alaska Native Regional Corporation	[Dotted pattern]	NANA ANRC 52120
State (or statistically equivalent entity)	[Dashed line]	NEW YORK 36
County (or statistically equivalent entity)	[Dashed line]	ERIE 029
Minor Civil Division (MCD) ¹	[Dotted pattern]	Bristol town 07485
Census County Division (CCD), Census Subarea (CSA), Unincorporated Territory (UT)	[Dotted pattern]	Jemez CCD 91650
Consolidated City	[Dotted pattern]	MILFORD 47500
Incorporated Place ^{1,2}	[Color fill]	Davis 18100
Census Designated Place (CDP) ¹	[Color fill]	Incline Village 35100
Voting District (VTD)	[Color fill]	100015
State Legislative District - Upper (Senate)	[Color fill]	SLDU 14
State Legislative District - Lower (House)	[Color fill]	SLDL 26

DESCRIPTION	SYMBOL	DESCRIPTION	SYMBOL
Interstate	[Thick solid line]	Water Body	[Blue fill]
U.S. Highway	[Double solid line]	Swamp or Marsh	[Blue wavy line]
State Highway	[Single solid line]	Glacier	[Blue wavy line]
Other Road	[Thin solid line]	Military	[Blue wavy line]
4015 Trail, Staircase, Alley, Walkway, or Ferry	[Thin dashed line]	National or State Park, Forest, or Recreation Area	[Green fill]
Railroad	[Thin dashed line]	Inset Area	[Grey fill]
Pipeline or Power Line	[Thin dashed line]	Outside Subject Area	[Grey fill]
Ridge or Fence	[Thin dashed line]		
Property Line	[Thin dashed line]		
Nonvisible Boundary or Feature Not Elsewhere Classified	[Thin dashed line]		

Where state, county, and/or MCD/CCD boundaries coincide, the map shows the boundary symbol for only the highest-ranking of these boundaries.

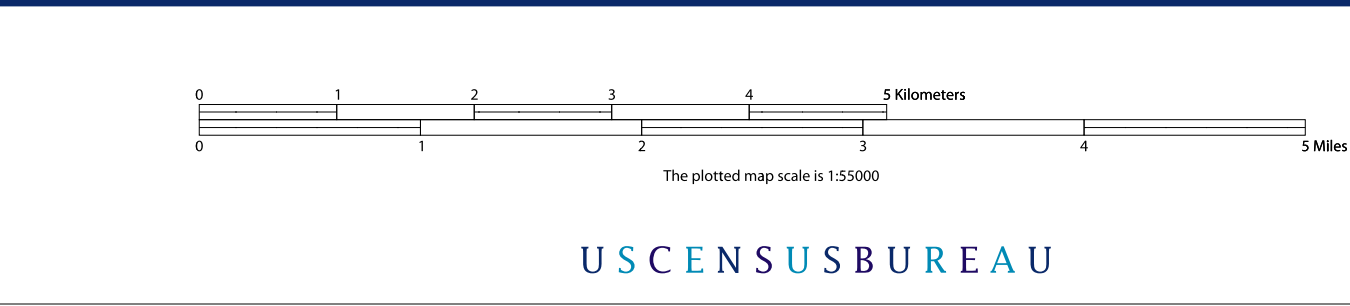
1 A * following an MCD name denotes a false MCD. A * following a place name indicates that a false MCD exists with the same name and FIPS code as the place; the false MCD label is not shown.

2 Place label color correlates to the place fill color.

All legal boundaries and names are as of January 1, 2010. The boundaries shown on this map are for Census Bureau statistical data collection and tabulation purposes only; their depiction and designation for statistical purposes does not constitute a determination of jurisdictional authority or rights of ownership or entitlement.

Geographic Vintage: 2010 Census (reference date: January 1, 2010)
 Data Source: U.S. Census Bureau's MAI/TIGER database (TAB10022)
 Map Created by Geography Division: November 14, 2010

Projection: Albers Equal Area Conic
 Datum: NAD 83
 Spheroid: GRS 80
 1st Standard Parallel: 36 45 55
 2nd Standard Parallel: 39 50 38
 Central Meridian: -92 51 50
 Latitude of Projection's Origin: 35 59 44
 False Easting: 0
 False Northing: 0

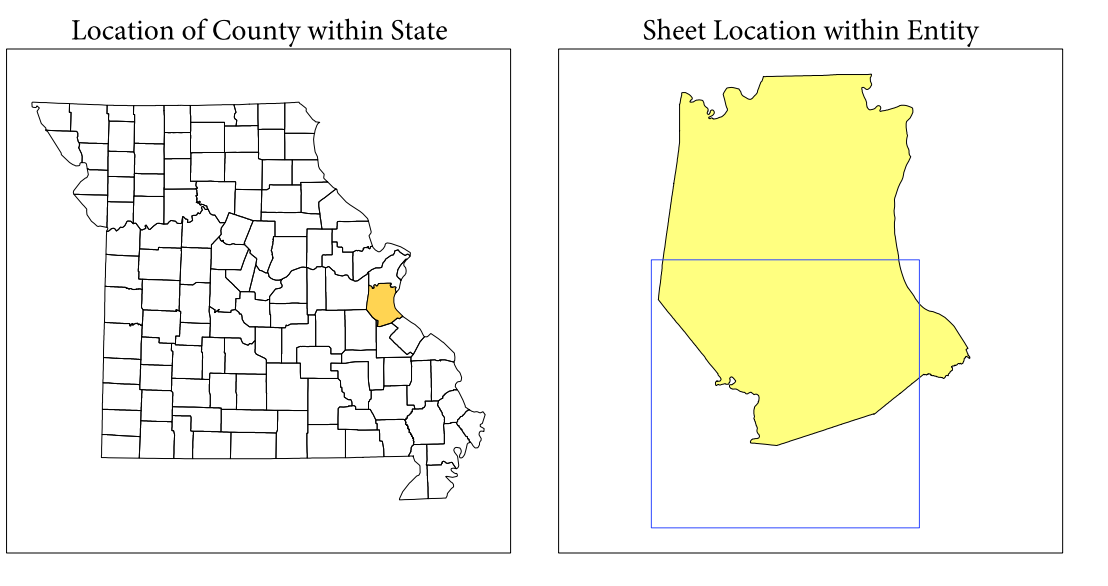


USCENSUSBUREAU

Key to Sheets

1	2	3
4	5	6

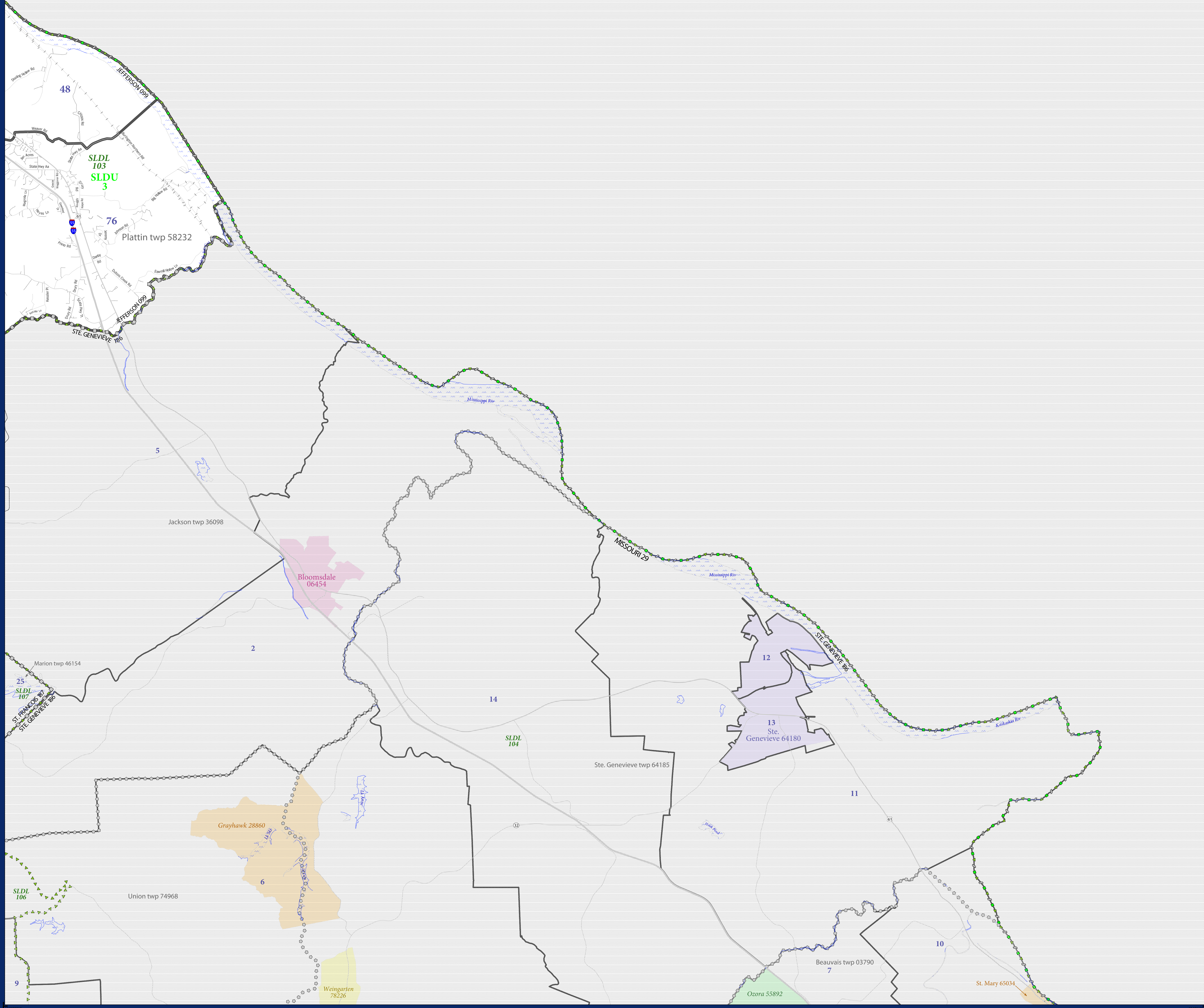
PARENT SHEET 2
 Total Sheets: 4
 Index Sheets: 1
 Parent Sheets: 3
 Inset Sheets: 0



NAME: Jefferson County (099)
 ENTITY TYPE: County or statistically equivalent entity
 ST: Missouri (29)

2010 PL VTD/SLD MAP (PARENT)
 20110909002

P.L. 94-171 VTD/SLD REFERENCE MAP (2010 CENSUS): Jefferson County, MO



LEGEND

SYMBOL DESCRIPTION	SYMBOL	LABEL STYLE
Federal American Indian Reservation	[Symbol]	L'ANSE RES 1880
Off-Reservation Trust Land, Hawaiian Home Land	[Symbol]	T1880
Oklahoma Tribal Statistical Area, Alaska Native Village Statistical Area, Tribal Designated Statistical Area	[Symbol]	KAW OTSA 5340
State American Indian Reservation	[Symbol]	Tama Res 4125
State Designated Tribal Statistical Area	[Symbol]	Lumbee STSA 9815
Alaska Native Regional Corporation	[Symbol]	NANA ANRC 52120
State (or statistically equivalent entity)	[Symbol]	NEW YORK 36
County (or statistically equivalent entity)	[Symbol]	ERIE 029
Minor Civil Division (MCD) ¹	[Symbol]	Bristol town 07485
Census County Division (CCD), Census Subarea (CSA), Unorganized Territory (UT)	[Symbol]	Jemez CCD 91650
Consolidated City	[Symbol]	MILFORD 47500
Incorporated Place ^{1,2}	[Symbol]	Davis 18100
Census Designated Place (CDP) ²	[Symbol]	Incline Village 35100
Voting District (VTD)	[Symbol]	100015
State Legislative District - Upper (Senate)	[Symbol]	SLDU 14
State Legislative District - Lower (House)	[Symbol]	SLDL 26

DESCRIPTION	SYMBOL	DESCRIPTION	SYMBOL
Inestate	[Symbol]	Water Body	[Symbol]
U.S. Highway	[Symbol]	Swamp or Marsh	[Symbol]
State Highway	[Symbol]	Gliacier	[Symbol]
Other Road	[Symbol]	Military	[Symbol]
4011 Trust, Succession, Allow, Withdraw, or Ferry	[Symbol]	National or State Park, Forest, or Recreation Area	[Symbol]
Railroad	[Symbol]	Inset Area	[Symbol]
Pipeline or Power Line	[Symbol]	Outside Subject Area	[Symbol]
Ridge or Fence	[Symbol]		
Property Line	[Symbol]		
Nonvisible Boundary or Feature Not Elsewhere Classified	[Symbol]		

Where state, county, and/or MCD/CCD boundaries coincide, the map shows the boundary symbol for only the highest-ranking of these boundaries.

1 A "*" following an MCD name denotes a false MCD. A "*" following a place name indicates that a false MCD exists with the same name and FIPS code as the place; the false MCD label is not shown.

2 Place label color correlates to the place fill color.

All legal boundaries and names are as of January 1, 2010. The boundaries shown on this map are for Census Bureau statistical data collection and tabulation purposes only; their depiction and designation for statistical purposes does not constitute a determination of jurisdictional authority or rights of ownership or entitlement.

Geographic Vintage: 2010 Census (reference date: January 1, 2010)
 Data Source: U.S. Census Bureau's MAINTIGR database (TAB100229)
 Map Created by Geography Division: November 14, 2010

U.S. DEPARTMENT OF COMMERCE Economics and Statistics Administration U.S. Census Bureau

Projection: Albers Equal Area Conic
 Datum: NAD 83
 Spheroid: GRS 80
 1st Standard Parallel: 36 45 55
 2nd Standard Parallel: 39 50 38
 Central Meridian: 92 51 50
 Latitude of Projection's Origin: 35 59 44
 False Easting: 0
 False Northing: 0

0 1 2 3 4 5 Kilometers
 0 1 2 3 4 5 Miles

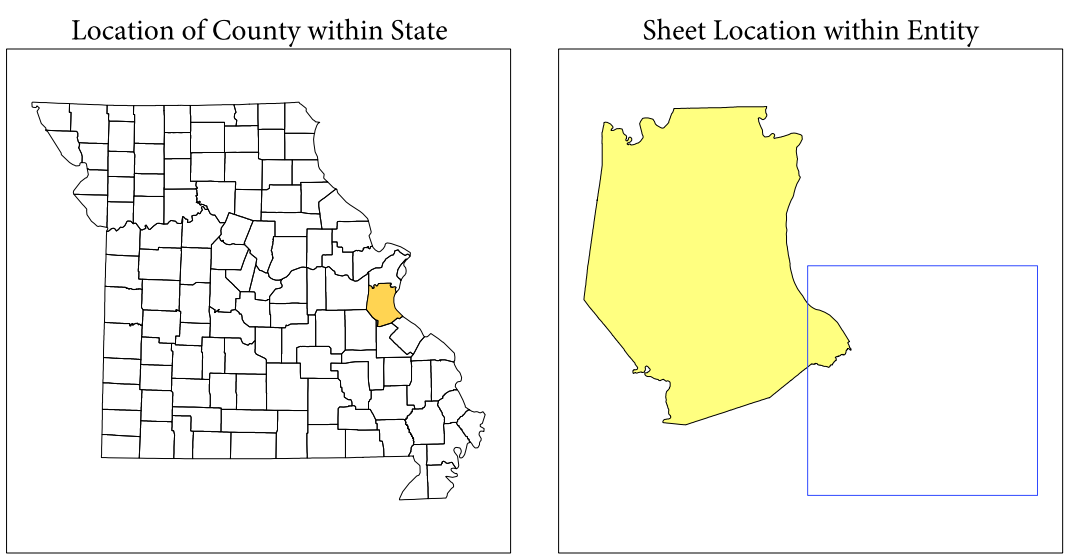
The plotted map scale is 1:50000

USCENSUSBUREAU

Key to Sheets

1	
2	3

PARENT SHEET 3
 Total Sheets: 4
 Index Sheets: 1
 Parent Sheets: 3
 Inset Sheets: 0



NAME: Jefferson County (099)
 ENTITY TYPE: County or statistically equivalent entity
 ST: Missouri (29)

2010 PL VTD/SLD MAP (PARENT)
 2011 2909003