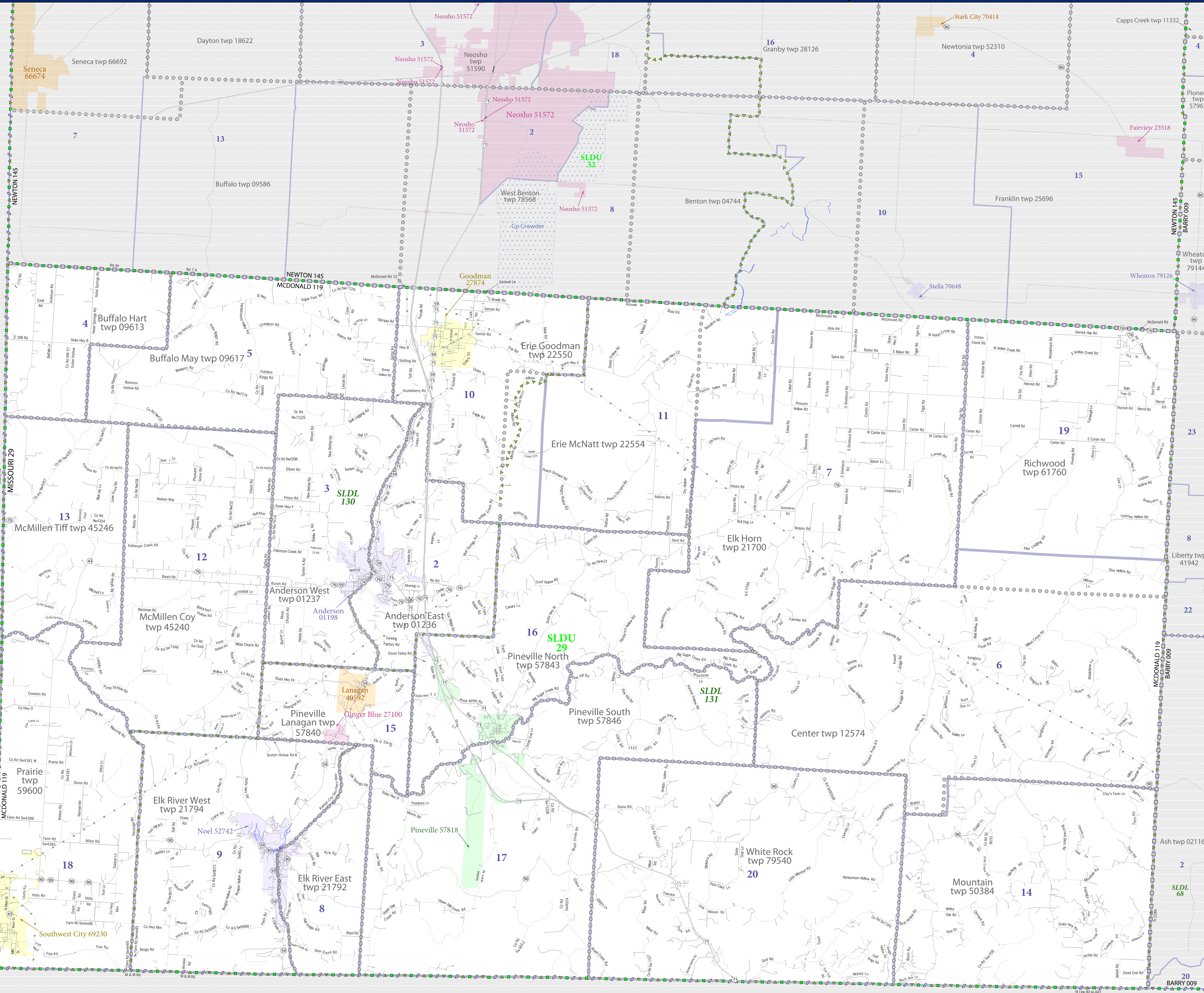


P.L. 94-171 VTD/SLD REFERENCE MAP (2010 CENSUS): McDonald County, MO



**LEGEND**

SYMBOL DESCRIPTION	SYMBOL	LABEL STYLE
Federal American Indian Reservation	[Dotted pattern]	L'ANSE RES 1880
Off-Reservation Trust Land, Hawaiian Home Land	[Dotted pattern]	T1880
Oklahoma Tribal Statistical Area, Alaska Native Village Statistical Area, Tribal Designated Statistical Area	[Dotted pattern]	KAW OTSA 5340
State American Indian Reservation	[Dotted pattern]	Tama Res 4125
State Designated Tribal Statistical Area	[Dotted pattern]	Lumbee STSA 9815
Alaska Native Regional Corporation	[Dotted pattern]	NANA ANRC 52120
State (or statistically equivalent entity)	[Dotted pattern]	NEW YORK 36
County (or statistically equivalent entity)	[Dotted pattern]	ERIE 029
Minor Civil Division (MCD) <sup>1</sup>	[Dotted pattern]	Bristol town 07485
Census County Division (CCD), Census Tracts (CT), Unincorporated Territory (UT)	[Dotted pattern]	Jemez CCD 91650
Consolidated City	[Dotted pattern]	MILFORD 47500
Incorporated Place <sup>1,2</sup>	[Dotted pattern]	Davis 18100
Census Designated Place (CDP) <sup>2</sup>	[Dotted pattern]	Incline Village 35100
Voting District (VTD)	[Dotted pattern]	100015
State Legislative District - Upper (Senate)	[Dotted pattern]	SLDU 14
State Legislative District - Lower (House)	[Dotted pattern]	SLDL 26

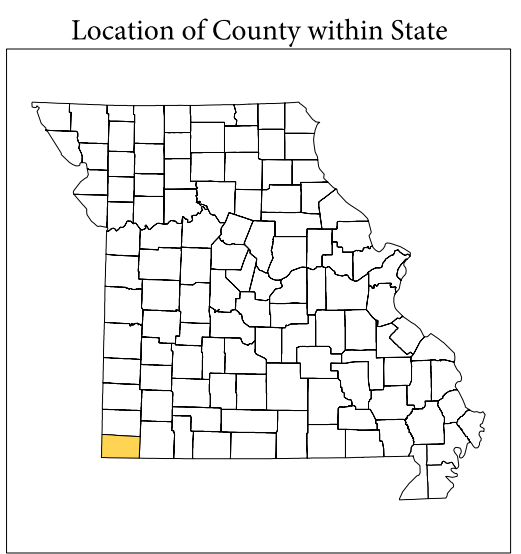
  

DESCRIPTION	SYMBOL	DESCRIPTION	SYMBOL
Interstate	[Thick solid line]	Water Body	[Blue wavy line]
U.S. Highway	[Thick dashed line]	Swamp or Marsh	[Blue wavy line]
State Highway	[Thin solid line]	Glacier	[Blue wavy line]
Other Road	[Thin dashed line]	Military	[Blue wavy line]
ATV Trail, Stairs, Aho, Walkway, or Ferry	[Thin dashed line]	National or State Park, Forest, or Recreation Area	[Blue wavy line]
Railroad	[Thin dashed line]	Inset Area	[Blue wavy line]
Pipeline or Power Line	[Thin dashed line]	Outside Subject Area	[Blue wavy line]
Ridge or Fence	[Thin dashed line]		
Property Line	[Thin dashed line]		
Nonvisible Boundary or Feature Not Elsewhere Classified	[Thin dashed line]		

Where state, county, and/or MCD/CCD boundaries coincide, the map shows the boundary symbol for only the highest-ranking of these boundaries.

1 A \* following an MCD name denotes a false MCD. A \* following a place name indicates that a false MCD exists with the same name and FIPS code as the place; the false MCD label is not shown.

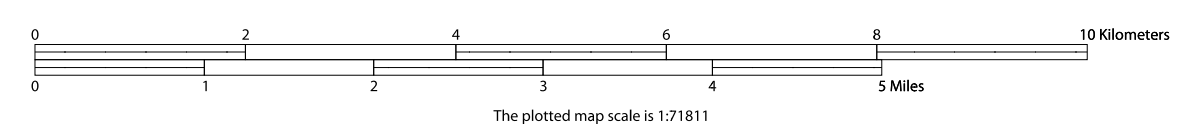
2 Place label color correlates to the place fill color.



All legal boundaries and names are as of January 1, 2010. The boundaries shown on this map are for Census Bureau statistical data collection and tabulation purposes only; their depiction and designation for statistical purposes does not constitute a determination of jurisdictional authority or rights of ownership or entitlement.

Geographic: Vintage: 2010 Census (reference date: January 1, 2010)  
 Data Source: U.S. Census Bureau's MAINTIGR database (TAB100123)  
 Map Created by Geography Division: November 13, 2010

Projection: Albers Equal Area Conic  
 Datum: NAD 83  
 Spheroid: GRS 80  
 1st Standard Parallel: 36 45 55  
 2nd Standard Parallel: 39 50 38  
 Central Meridian: -92 51 50  
 Latitude of Projection's Origin: 35 59 44  
 False Easting: 0  
 False Northing: 0



PARENT SHEET 1  
 Total Sheets: 1  
 Index Sheets: 0  
 Parent Sheets: 1  
 Inset Sheets: 0

NAME: McDonald County (119)  
 ENTITY TYPE: County or statistically equivalent entity  
 ST: Missouri (29)