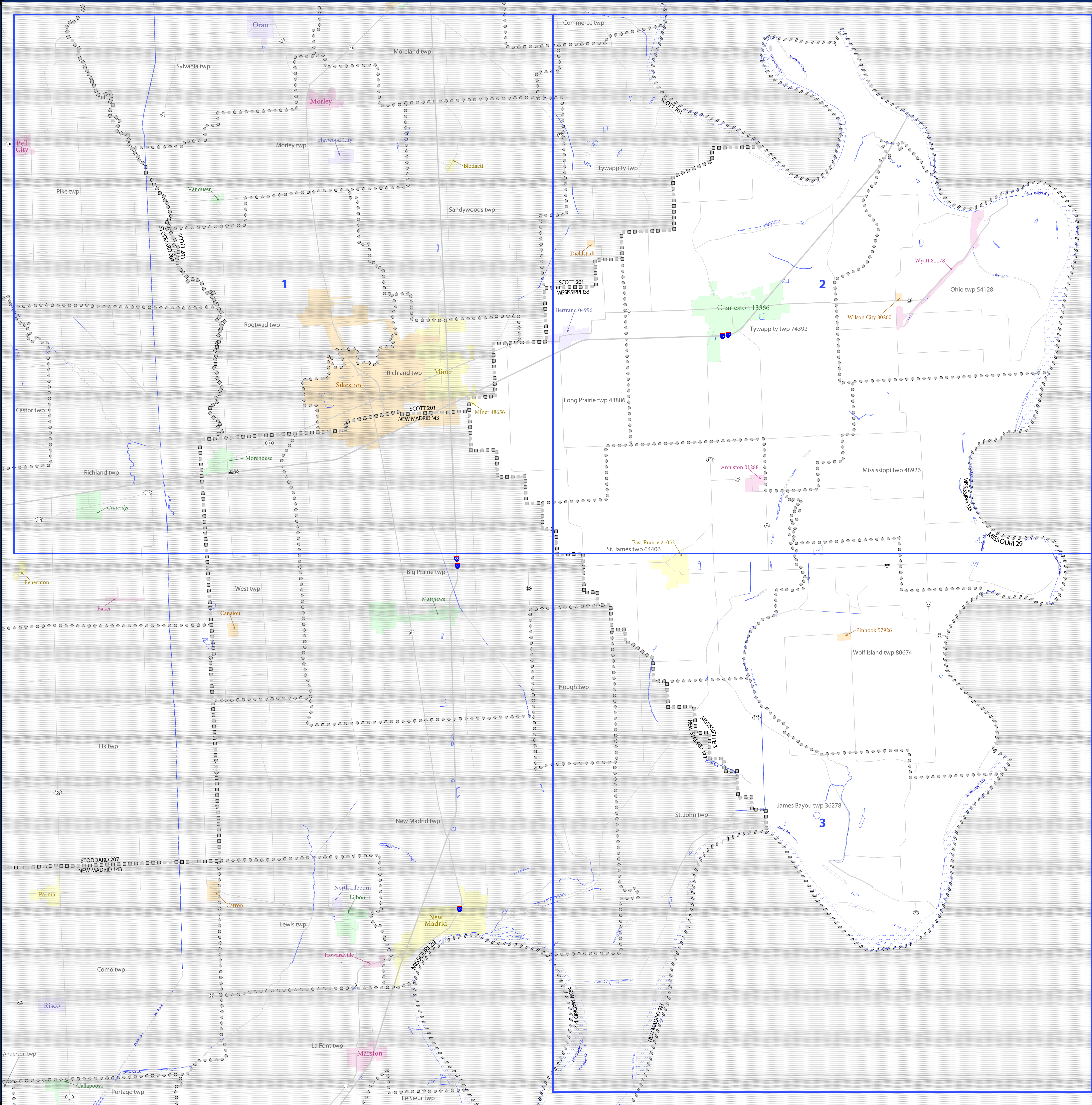


**P.L. 94-171 VTD/SLD REFERENCE MAP (2010 CENSUS): Mississippi County, MO**



**LEGEND**

SYMBOL DESCRIPTION	SYMBOL	LABEL STYLE
Federal American Indian Reservation	[Dotted pattern]	<b>L'ANSE RES 1880</b>
Off-Reservation Trust Land, Hawaiian Home Land	[Dotted pattern]	<b>T1880</b>
Oklahoma Tribal Statistical Area, Alaska Native Village Statistical Area, Tribal Designated Statistical Area	[Dotted pattern]	<b>KAW OTSA 5340</b>
State American Indian Reservation	[Dotted pattern]	<b>Tama Res 4125</b>
State Designated Tribal Statistical Area	[Dotted pattern]	<b>Lumbee STSA 9815</b>
Alaska Native Regional Corporation	[Dotted pattern]	<b>NANA ANRC 52120</b>
State (or statistically equivalent entity)	[Dotted pattern]	<b>NEW YORK 36</b>
County (or statistically equivalent entity)	[Dotted pattern]	<b>ERIE 029</b>
Minor Civil Division (MCD) <sup>1</sup>	[Dotted pattern]	<b>Bristol town 07485</b>
Census County Division (CCD), Census Subarea (CSA), Unorganized Territory (UT)	[Dotted pattern]	<b>Jemez CCD 91650</b>
Consolidated City	[Dotted pattern]	<b>MILFORD 47500</b>
Incorporated Place <sup>1,2</sup>	[Color fill]	<b>Davis 18100</b>
Census Designated Place (CDP) <sup>2</sup>	[Color fill]	<b>Incline Village 35100</b>
Voting District (VTD)	[Color fill]	<b>100015</b>
State Legislative District - Upper (Senate)	[Color fill]	<b>SLDU 14</b>
State Legislative District - Lower (House)	[Color fill]	<b>SLDL 26</b>

DESCRIPTION	SYMBOL	DESCRIPTION	SYMBOL
Interstate	[Thick blue line]	Water Body	[Blue wavy line]
U.S. Highway	[Thick black line]	Swamp or Marsh	[Blue wavy line]
State Highway	[Thin black line]	Glacier	[Blue wavy line]
Other Road	[Thin black line]	Military	[Blue wavy line]
AWD Trail, Scenic Area, Walkway, or Ferry	[Thin black line]	National or State Park, Forest, or Recreation Area	[Green wavy line]
Railroad	[Thin black line]	Inset Area	[Blue wavy line]
Pipeline or Power Line	[Thin black line]	Outside Subject Area	[Blue wavy line]
Ridge or Fence	[Thin black line]		
Property Line	[Thin black line]		
Nonvisible Boundary or Feature Not Elsewhere Classified	[Thin black line]		

Where state, county, and/or MCD/CCD boundaries coincide, the map shows the boundary symbol for only the highest-ranking of these boundaries.

1 A "\*" following an MCD name denotes a false MCD. A "\*" following a place name indicates that a false MCD exists with the same name and FIPS code as the place; the false MCD label is not shown.

2 Place label color correlates to the place fill color.



All legal boundaries and names are as of January 1, 2010. The boundaries shown on this map are for Census Bureau statistical data collection and tabulation purposes only; their depiction and designation for statistical purposes does not constitute a determination of jurisdictional authority or rights of ownership or entitlement.

Geographic Vintage: 2010 Census (reference date: January 1, 2010)  
 Data Source: U.S. Census Bureau's MA7/TIGER database (TAB100229)  
 Map Created by Geography Division: November 13, 2010

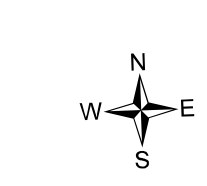
U.S. DEPARTMENT OF COMMERCE Economics and Statistics Administration U.S. Census Bureau

Projection: Albers Equal Area Conic  
 Datum: NAD 83  
 Spheroid: GRS 80  
 1st Standard Parallel: 36 45 55  
 2nd Standard Parallel: 39 50 38  
 Central Meridian: 92 51 50  
 Latitude of Projection's Origin: 35 59 44  
 False Easting: 0  
 False Northing: 0

The plotted map scale is 1:20115

0 2 4 6 8 10 Kilometers  
 0 2 4 6 8 10 Miles

U.S. CENSUS BUREAU

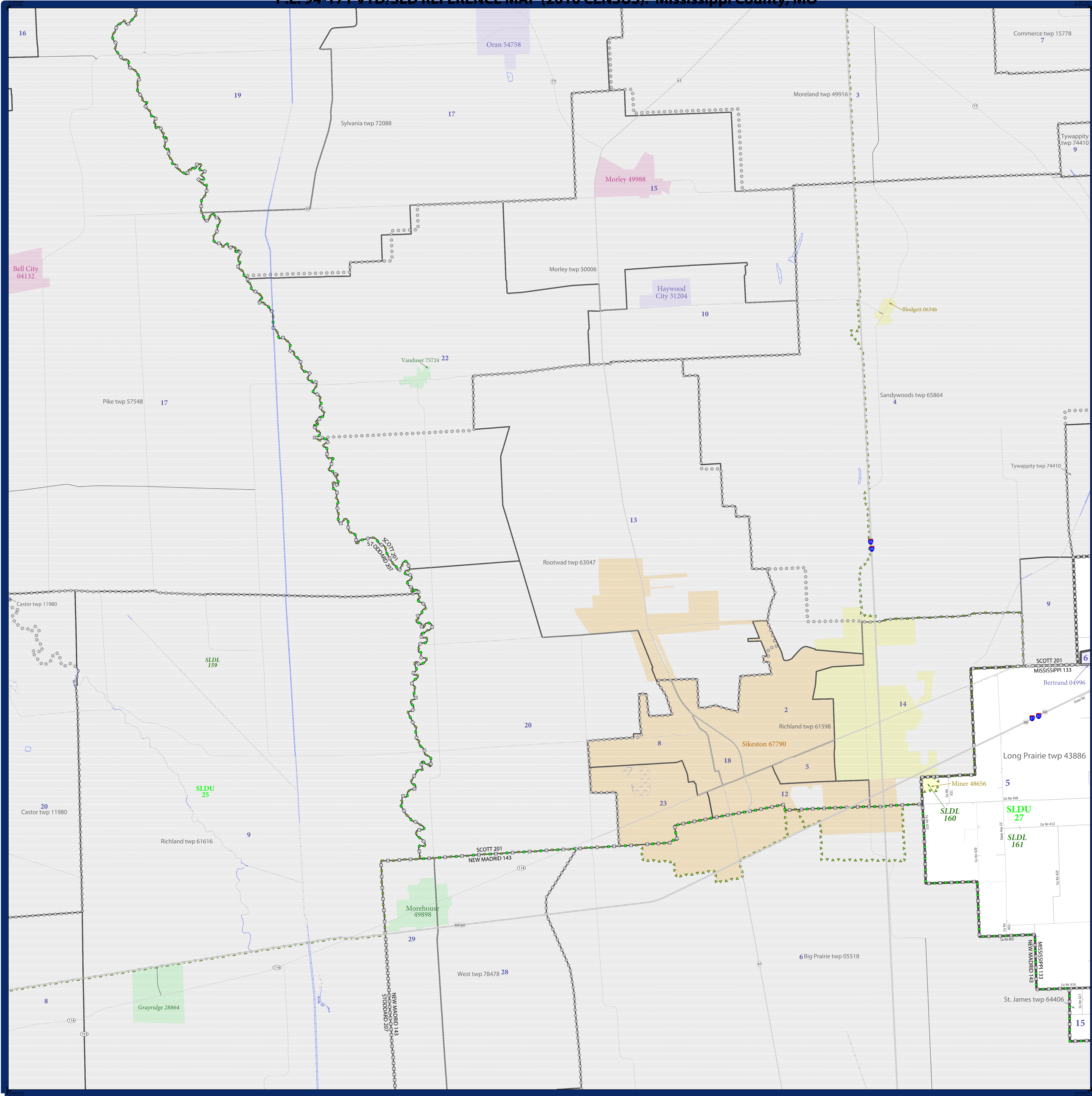


INDEX SHEET

Total Sheets: 4  
 Index Sheets: 1  
 Parent Sheets: 3  
 Inset Sheets: 0

NAME: Mississippi County (133)  
 ENTITY TYPE: County or statistically equivalent entity  
 ST: Missouri (29)

P.L. 94-171 VTD/SLD REFERENCE MAP (2010 CENSUS): Mississippi County, MO



**LEGEND**

SYMBOL DESCRIPTION	SYMBOL	LABEL STYLE
Federal American Indian Reservation	[Symbol]	L'ANSE RES 1880
Off-Reservation Trust Land, Hawaiian Home Land	[Symbol]	T1880
Oklahoma Tribal Statistical Area, Alaska Native Village Statistical Area, Tribal Designated Statistical Area	[Symbol]	KAW OTSA 5340
State American Indian Reservation	[Symbol]	Tama Res 4125
State Designated Tribal Statistical Area	[Symbol]	Lumbee STSA 9815
Alaska Native Regional Corporation	[Symbol]	NANA ANRC 52120
State (or statistically equivalent entity)	[Symbol]	NEW YORK 36
County (or statistically equivalent entity)	[Symbol]	ERIE 029
Minor Civil Division (MCD) <sup>1</sup>	[Symbol]	Bristol town 07485
Census County Division (CCD), Census Subarea (CSA), Unorganized Territory (UT)	[Symbol]	Jemez CCD 91650
Consolidated City	[Symbol]	MILFORD 47500
Incorporated Place <sup>1,2</sup>	[Symbol]	Davis 18100
Census Designated Place (CDP) <sup>2</sup>	[Symbol]	Incline Village 35100
Voting District (VTD)	[Symbol]	100015
State Legislative District - Upper (Senate)	[Symbol]	SLDU 14
State Legislative District - Lower (House)	[Symbol]	SLDL 26

DESCRIPTION	SYMBOL	DESCRIPTION	SYMBOL
Interstate	[Symbol]	Water Body	[Symbol]
U.S. Highway	[Symbol]	Swamp or Marsh	[Symbol]
State Highway	[Symbol]	Glacier	[Symbol]
Other Road	[Symbol]	Military	[Symbol]
4011 Trail, Staircase, Alley, Walkway, or Ferry	[Symbol]	National or State Park, Forest, or Recreation Area	[Symbol]
Railroad	[Symbol]	Inset Area	[Symbol]
Pipeline or Power Line	[Symbol]	Outside Subject Area	[Symbol]
Ridge or Fence	[Symbol]		
Property Line	[Symbol]		
Nonvisible Boundary or Feature Not Elsewhere Classified	[Symbol]		

Where state, county, and/or MCD/CCD boundaries coincide, the map shows the boundary symbol for only the highest-ranking of these boundaries.

1 A "\*" following an MCD name denotes a false MCD. A "\*" following a place name indicates that a false MCD exists with the same name and FIPS code as the place; the false MCD label is not shown.

2 Place label color correlates to the place fill color.

All legal boundaries and names are as of January 1, 2010. The boundaries shown on this map are for Census Bureau statistical data collection and tabulation purposes only; their depiction and designation for statistical purposes does not constitute a determination of jurisdictional authority or rights of ownership or entitlement.

Geographic Vintage: 2010 Census (reference date: January 1, 2010)  
 Data Source: U.S. Census Bureau's MAINTIGER database (TAB100229)  
 Map Created by Geography Division: November 13, 2010

U.S. DEPARTMENT OF COMMERCE Economics and Statistics Administration U.S. Census Bureau

Projection: Albers Equal Area Conic  
 Datum: NAD 83  
 Spheroid: GRS 80  
 1st Standard Parallel: 36 45 55  
 2nd Standard Parallel: 39 50 38  
 Central Meridian: -92 51 50  
 Latitude of Projection's Origin: 35 59 44  
 False Easting: 0  
 False Northing: 0

The plotted map scale is 1:40000

U.S. CENSUS BUREAU

Key to Sheets

1	2
3	

PARENT SHEET 1  
 Total Sheets: 4  
 Index Sheets: 1  
 Inset Sheets: 3  
 Inset Sheets: 0

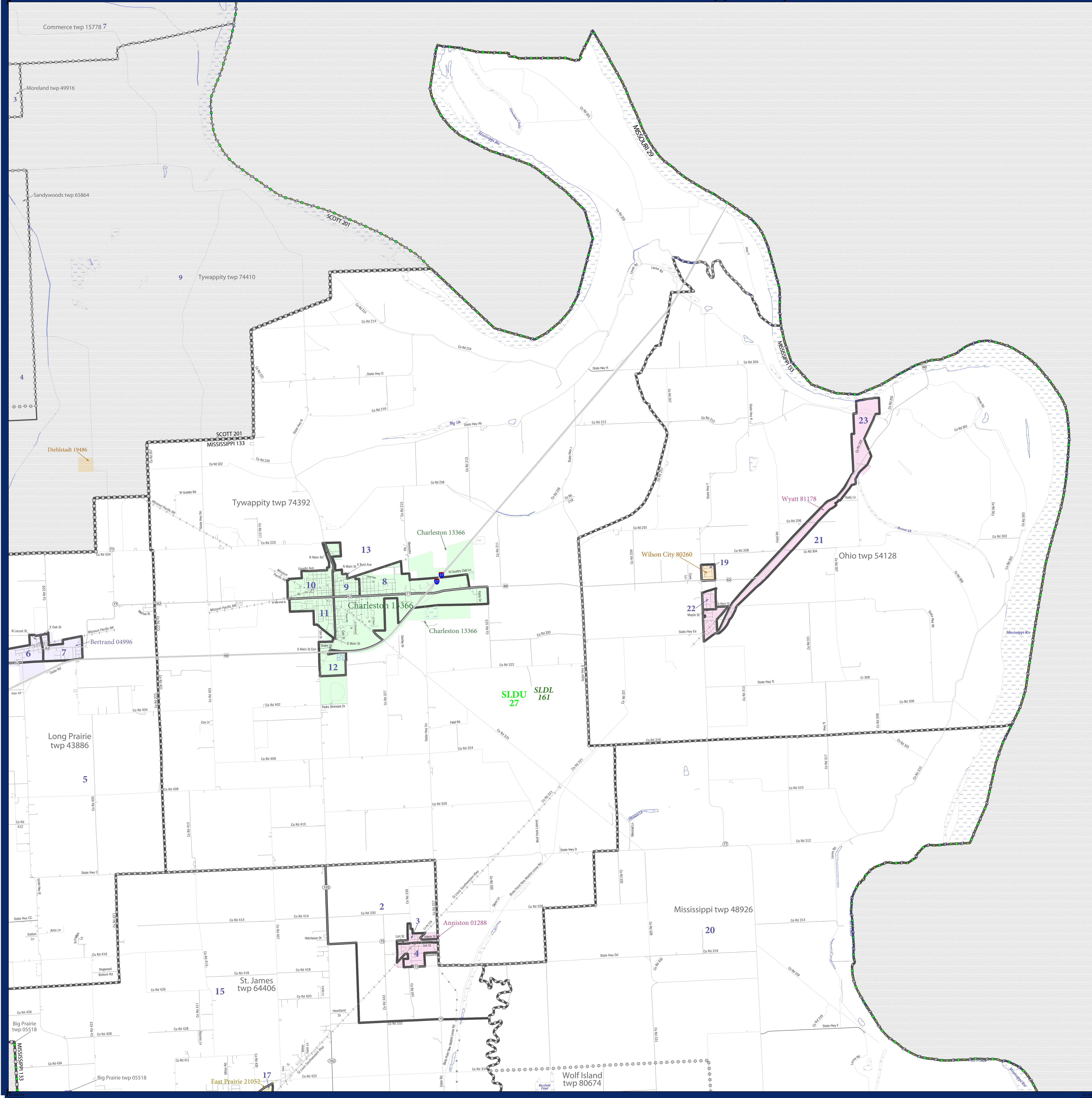
Location of County within State

Sheet Location within Entity

NAME: Mississippi County (133)  
 ENTITY TYPE: County or statistically equivalent entity  
 ST: Missouri (29)

2010 PL VTD/SLD MAP (PARENT) 20080113001

P.L. 94-171 VTD/SLD REFERENCE MAP (2010 CENSUS): Mississippi County, MO



**LEGEND**

SYMBOL DESCRIPTION	SYMBOL	LABEL STYLE
Federal American Indian Reservation	[Symbol]	L'ANSE RES 1880
Off-Reservation Trust Land, Hawaiian Home Land	[Symbol]	T1880
Oklahoma Tribal Statistical Area, Alaska Native Village Statistical Area, Tribal Designated Statistical Area	[Symbol]	KAW OTSA 5340
State American Indian Reservation	[Symbol]	Tama Res 4125
State Designated Tribal Statistical Area	[Symbol]	Lumbee STSA 9815
Alaska Native Regional Corporation	[Symbol]	NANA ANRC 52120
State (or statistically equivalent entity)	[Symbol]	NEW YORK 36
County (or statistically equivalent entity)	[Symbol]	ERIE 029
Minor Civil Division (MCD) <sup>1</sup>	[Symbol]	Bristol town 07485
Census County Division (CCD), Census Subarea (CSA), Unorganized Territory (UT)	[Symbol]	Jemez CCD 91650
Consolidated City	[Symbol]	MILFORD 47500
Incorporated Place <sup>1,2</sup>	[Symbol]	Davis 18100
Census Designated Place (CDP) <sup>2</sup>	[Symbol]	Incline Village 35100
Voting District (VTD)	[Symbol]	100015
State Legislative District - Upper (Senate)	[Symbol]	SLDU 14
State Legislative District - Lower (House)	[Symbol]	SLDL 26

DESCRIPTION	SYMBOL	DESCRIPTION	SYMBOL
Interstate	[Symbol]	Water Body	[Symbol]
U.S. Highway	[Symbol]	Swamp or Marsh	[Symbol]
State Highway	[Symbol]	Glacier	[Symbol]
Other Road	[Symbol]	Military	[Symbol]
ATIS <sup>1</sup> Truck Routes, AHS, Walkway, or Ferry	[Symbol]	National or State Park, Forest, or Recreation Area	[Symbol]
Railroad	[Symbol]	Inset Area	[Symbol]
Pipeline or Power Line	[Symbol]	Outside Subject Area	[Symbol]
Ridge or Fence	[Symbol]		
Property Line	[Symbol]		
Nonvisible Boundary or Feature Not Elsewhere Classified	[Symbol]		

Where state, county, and/or MCD/CCD boundaries coincide, the map shows the boundary symbol for only the highest-ranking of these boundaries.

1 A \* following an MCD name denotes a false MCD. A \* following a place name indicates that a false MCD exists with the same name and FIPS code as the place; the false MCD label is not shown.

2 Place label color correlates to the place fill color.

All legal boundaries and names are as of January 1, 2010. The boundaries shown on this map are for Census Bureau statistical data collection and tabulation purposes only; their depiction and designation for statistical purposes does not constitute a determination of jurisdictional authority or rights of ownership or entitlement.

Geographic Vintage: 2010 Census (reference date: January 1, 2010)  
 Data Source: U.S. Census Bureau's MAINTIGR database (TAB100229)  
 Map Created by Geography Division: November 13, 2010

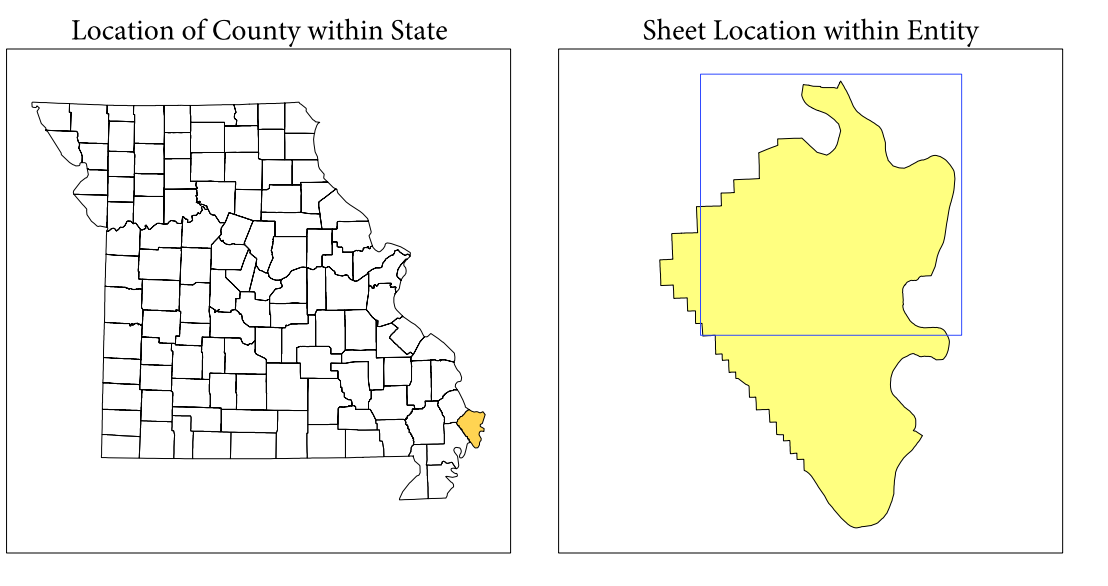
Projection: Albers Equal Area Conic  
 Datum: NAD83  
 Spheroid: GRS 80  
 1st Standard Parallel: 36 45 55  
 2nd Standard Parallel: 39 50 38  
 Central Meridian: -92 51 50  
 Latitude of Projection's Origin: 35 59 44  
 False Easting: 0  
 False Northing: 0

The plotted map scale is 1:40000

Key to Sheets

1	2
3	

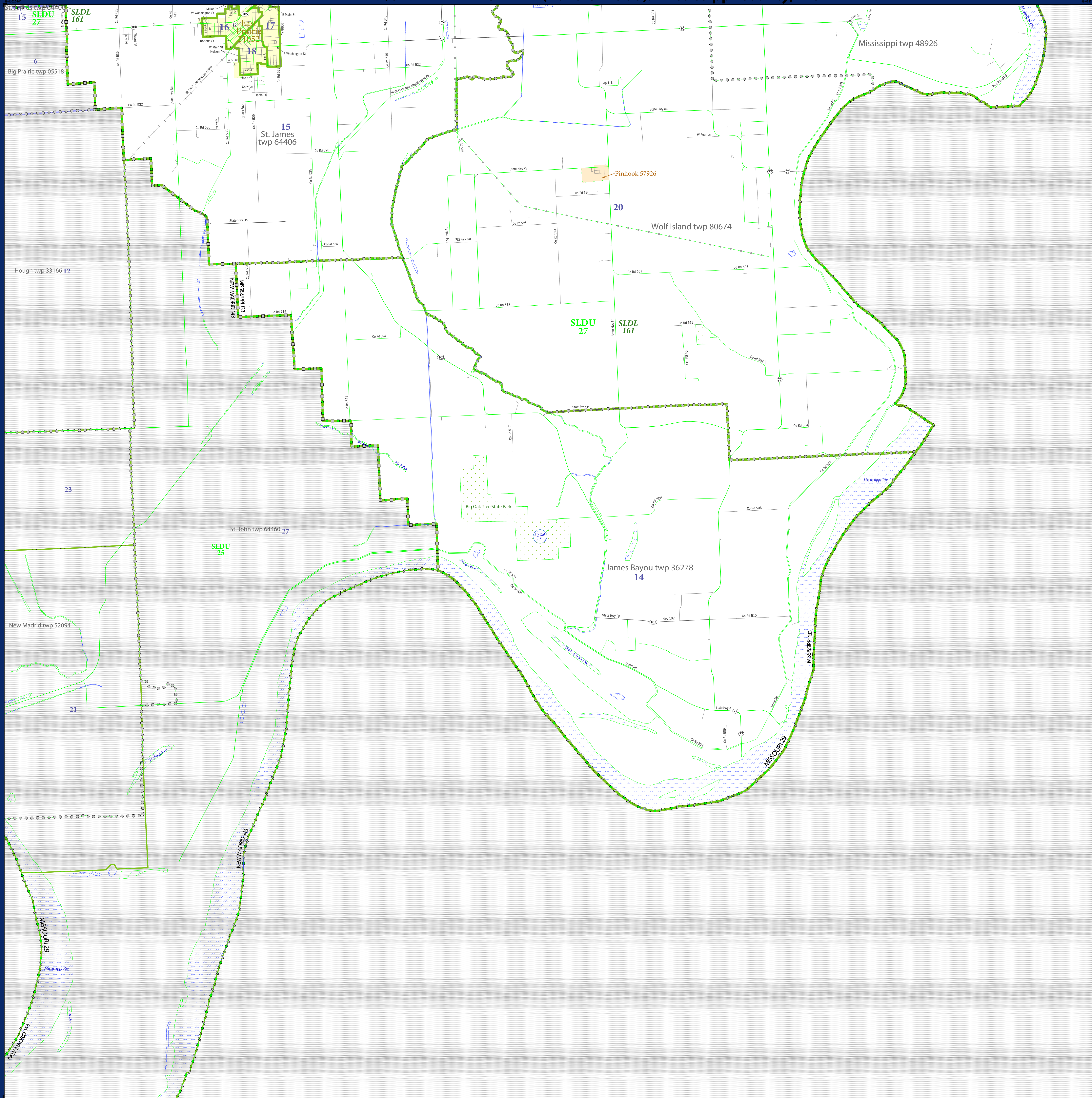
PARENT SHEET 2  
 Total Sheets: 4  
 Index Sheets: 1  
 Parent Sheets: 3  
 Inset Sheets: 0



NAME: Mississippi County (133)  
 ENTITY TYPE: County or statistically equivalent entity  
 ST: Missouri (29)

2010 PL VTD/SLD MAP (PARENT)  
 20090113002

P.L. 94-171 VTD/SLD REFERENCE MAP (2010 CENSUS): Mississippi County, MO



SYMBOL DESCRIPTION		LEGEND	
Federal American Indian Reservation	[Symbol]	L'ANSE RES 1880	
Off-Reservation Trust Land, Hawaiian Home Land	[Symbol]	T1880	
Oklahoma Tribal Statistical Area, Alaska Native Village Statistical Area, Tribal Designated Statistical Area	[Symbol]	KAW OTSA 5340	
State American Indian Reservation	[Symbol]	Tama Res 4125	
State Designated Tribal Statistical Area	[Symbol]	Lumbee STSA 9815	
Alaska Native Regional Corporation	[Symbol]	NANA ANRC 52120	
State (or statistically equivalent entity)	[Symbol]	NEW YORK 36	
County (or statistically equivalent entity)	[Symbol]	ERIE 029	
Minor Civil Division (MCD) <sup>1</sup>	[Symbol]	Bristol town 07485	
Census County Division (CCD), Census Subarea (CSA), Unorganized Territory (UT)	[Symbol]	Jemez CCD 91650	
Consolidated City	[Symbol]	MILFORD 47500	
Incorporated Place <sup>1,2</sup>	[Symbol]	Davis 18100	
Census Designated Place (CDP) <sup>2</sup>	[Symbol]	Incline Village 35100	
Voting District (VTD)	[Symbol]	100015	
State Legislative District - Upper (Senate)	[Symbol]	SLDU 14	
State Legislative District - Lower (House)	[Symbol]	SLDL 26	

DESCRIPTION	SYMBOL	DESCRIPTION	SYMBOL
Inertate	[Symbol]	Water Body	[Symbol]
U.S. Highway	[Symbol]	Swamp or Marsh	[Symbol]
State Highway	[Symbol]	Gliacier	[Symbol]
Other Road	[Symbol]	Military	[Symbol]
4011 Trunk, Arterial, Alley, Walkway, or Ferry	[Symbol]	National or State Park, Forest, or Recreation Area	[Symbol]
Railroad	[Symbol]	Inset Area	[Symbol]
Pipeline or Power Line	[Symbol]	Outside Subject Area	[Symbol]
Ridge or Fence	[Symbol]		
Property Line	[Symbol]		
Nonvisible Boundary or Feature Not Elsewhere Classified	[Symbol]		

Where state, county, and/or MCD/CCD boundaries coincide, the map shows the boundary symbol for only the highest-ranking of these boundaries.

1 A \* following an MCD name denotes a false MCD. A \* following a place name indicates that a false MCD exists with the same name and FIPS code as the place; the false MCD label is not shown.

2 Place label color correlates to the place fill color.

All legal boundaries and names are as of January 1, 2010. The boundaries shown on this map are for Census Bureau statistical data collection and tabulation purposes only; their depiction and designation for statistical purposes does not constitute a determination of jurisdictional authority or rights of ownership or entitlement.

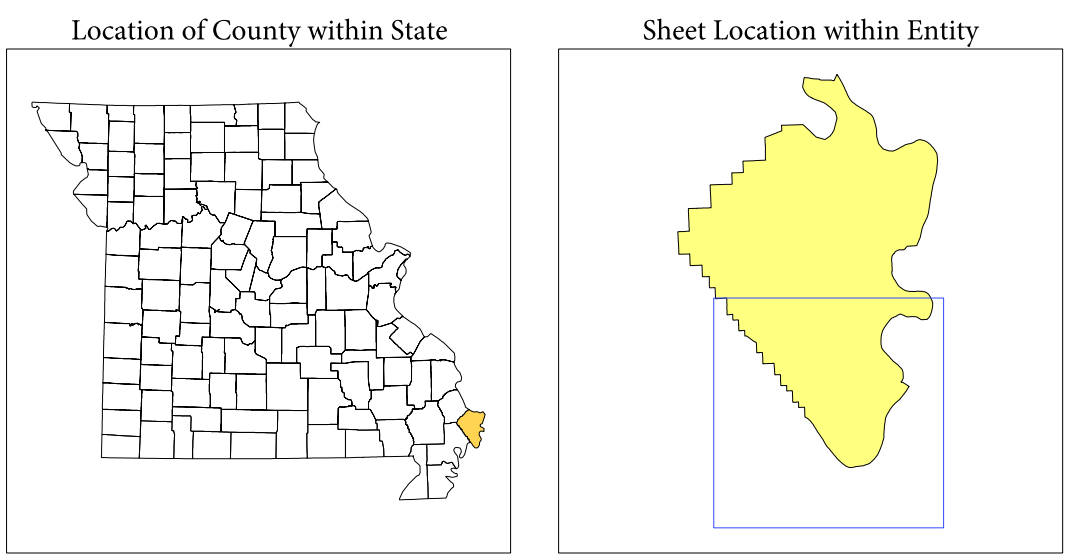
Geographic Vintage: 2010 Census (reference date: January 1, 2010)  
 Data Source: U.S. Census Bureau's MAINTIGER database (TAB10ST29)  
 Map Created by Geography Division: November 13, 2010

U.S. DEPARTMENT OF COMMERCE Economics and Statistics Administration U.S. Census Bureau

Projection: Albers Equal Area Conic  
 Datum: NAD 83  
 Spheroid: GRS 80  
 1st Standard Parallel: 36 45 55  
 2nd Standard Parallel: 39 50 38  
 Central Meridian: -92 51 50  
 Latitude of Projection's Origin: 35 59 44  
 False Easting: 0  
 False Northing: 0

The plotted map scale is 1:40000

USCENSUSBUREAU



NAME: Mississippi County (133)  
 ENTITY TYPE: County or statistically equivalent entity  
 ST: Missouri (29)

2010 PL VTD/SLD MAP (PARENT)  
 20090113001