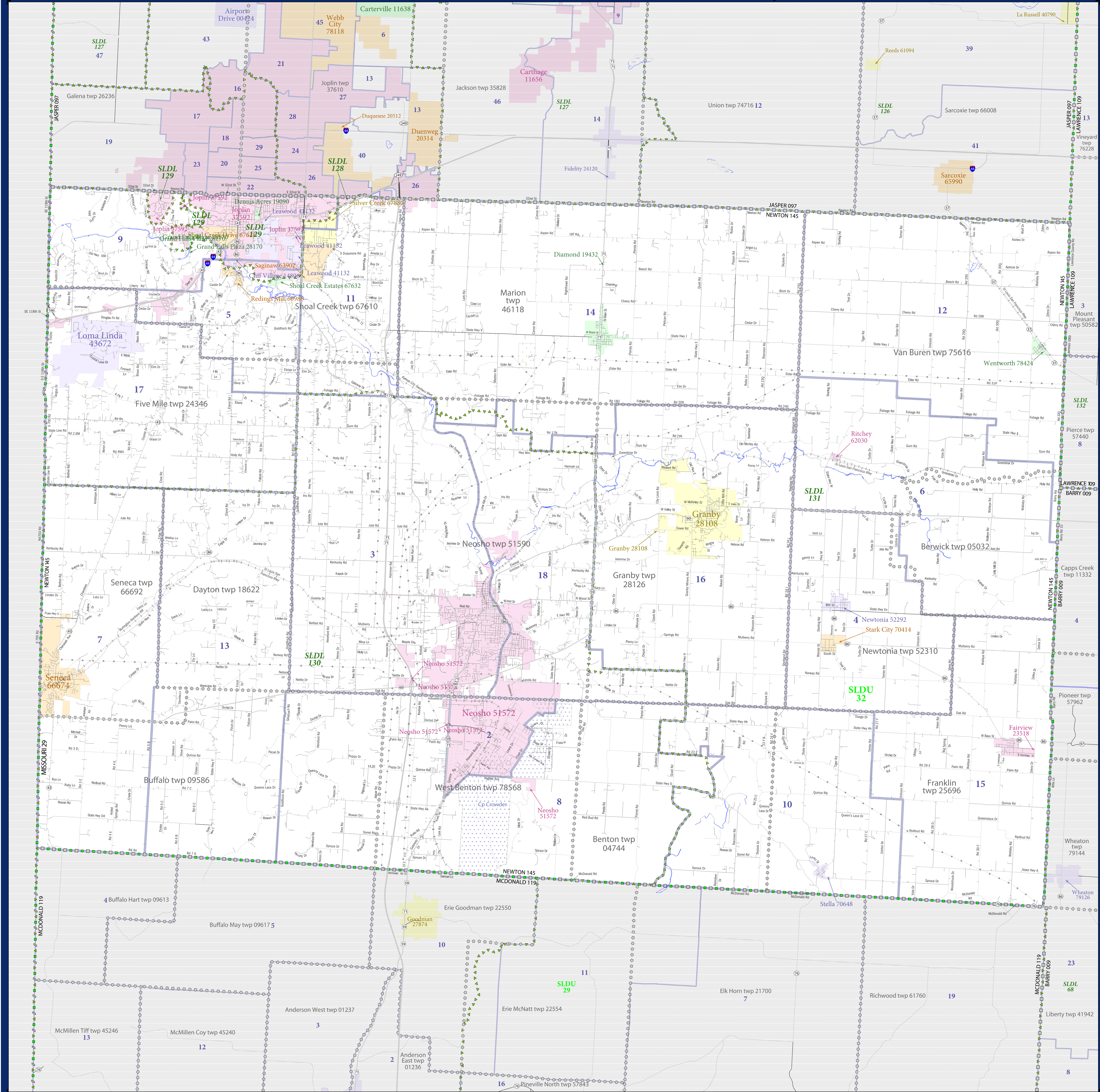


P.L. 94-171 VTD/SLD REFERENCE MAP (2010 CENSUS): Newton County, MO



LEGEND

SYMBOL DESCRIPTION	SYMBOL	LABEL STYLE
Federal American Indian Reservation	[Symbol]	L'ANSE RES 1880
Off-Reservation Trust Land, Hawaiian Home Land	[Symbol]	T1880
Oklahoma Tribal Statistical Area, Alaska Native Regional Corporation, Tribal Designated Statistical Area	[Symbol]	KAW OTSA 5340
State American Indian Reservation	[Symbol]	Tama Res 4125
State Designated Tribal Statistical Area	[Symbol]	Lumbee STSA 9815
State (or statistically equivalent entity)	[Symbol]	NANA ANRC 52120
County (or statistically equivalent entity)	[Symbol]	NEW YORK 36
Minor Civil Division (MCD) ¹	[Symbol]	ERIE 029
Census County Division (CCD), Census Tracts (CT), Unincorporated Territory (UT)	[Symbol]	Bristol town 07485
Consolidated City	[Symbol]	Jemez CCD 91650
Incorporated Place ^{1,2}	[Symbol]	MILFORD 47500
Census Designated Place (CDP) ¹	[Symbol]	Davis 18100
Voting District (VTD)	[Symbol]	Incline Village 35100
State Legislative District - Upper (Senate)	[Symbol]	100015
State Legislative District - Lower (House)	[Symbol]	SLDU 14
	[Symbol]	SLDL 26

DESCRIPTION	SYMBOL	DESCRIPTION	SYMBOL
Interstate	[Symbol]	Water Body	[Symbol]
U.S. Highway	[Symbol]	Swamp or Marsh	[Symbol]
State Highway	[Symbol]	Glacier	[Symbol]
Other Road	[Symbol]	Military	[Symbol]
4WD Trail, Seasonal, Atoll, Walkway, or Ferry	[Symbol]	National or State Park, Forest, or Recreation Area	[Symbol]
Railroad	[Symbol]	Inset Area	[Symbol]
Pipeline or Power Line	[Symbol]	Outside Subject Area	[Symbol]
Ridge or Fence	[Symbol]		
Property Line	[Symbol]		
Nonvisible Boundary or Feature Not Elsewhere Classified	[Symbol]		

Where state, county, and/or MCD/CCD boundaries coincide, the map shows the boundary symbol for only the highest-ranking of these boundaries.

1 A * following an MCD name denotes a false MCD. A ** following a place name indicates that a false MCD exists with the same name and FIPS code as the place; the false MCD label is not shown.

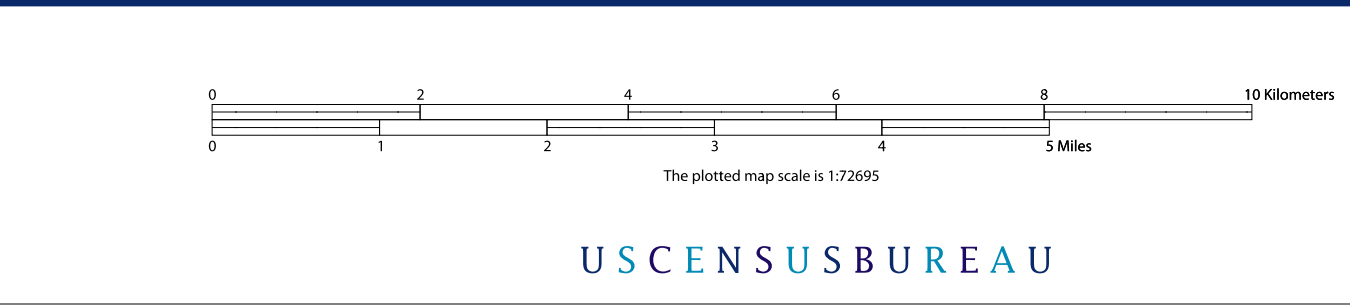
2 Place label color correlates to the place fill color.

Location of County within State

All legal boundaries and names are as of January 1, 2010. The boundaries shown on this map are for Census Bureau statistical data collection and tabulation purposes only; their depiction and designation for statistical purposes does not constitute a determination of jurisdictional authority or rights of ownership or entitlement.

Geographic Vintage: 2010 Census (reference date: January 1, 2010)
 Data Source: U.S. Census Bureau's MAINTIGR database (TAB100122)
 Map Created by Geography Division: November 13, 2010

Projection: Albers Equal Area Conic
 Datum: NAD 83
 Spheroid: GRS 80
 1st Standard Parallel: 36 45 55
 2nd Standard Parallel: 39 50 38
 Central Meridian: -92 51 50
 Latitude of Projection's Origin: 35 59 44
 False Easting: 0
 False Northing: 0



PARENT SHEET 1

Total Sheets: 1
 Index Sheets: 0
 Parent Sheets: 1
 Inset Sheets: 0

NAME: Newton County (145)
 ENTITY TYPE: County or statistically equivalent entity
 ST: Missouri (29)

2010 PL VTD/SLD MAP (PARENT)
 20090146001