

P.L. 94-171 VOTING DISTRICT/STATE LEGISLATIVE DISTRICT OUTLINE MAP (CENSUS 2000)

38 374833N  
91 505196W

38 374833N  
91 357565W

GEOGRAPHIC AREAS LEGEND

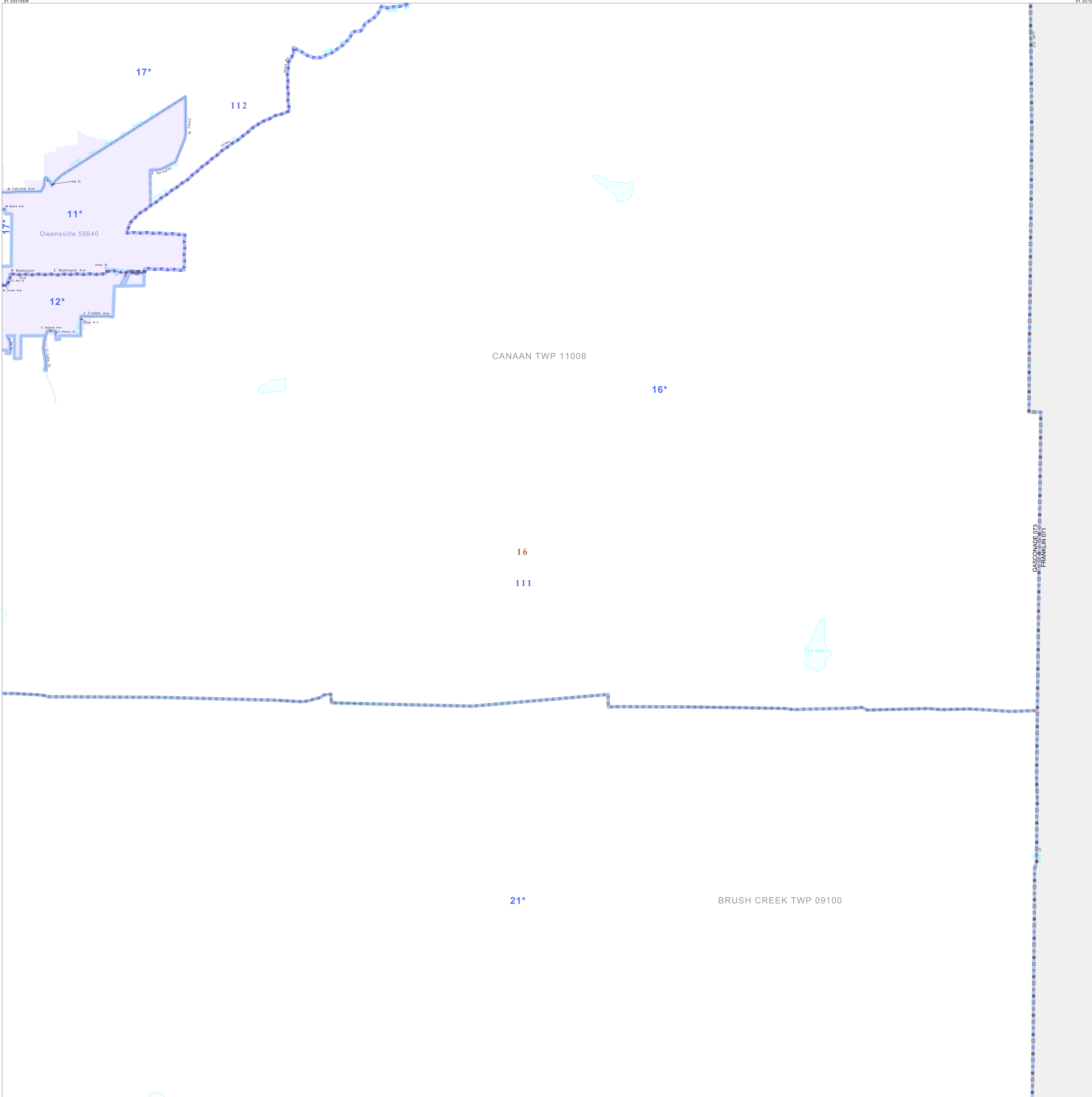
SYMBOL	NAME STYLE
*****	INTERNATIONAL
//////	STATE
□□□□□□	COUNTY
○ ○ ○ ○ ○	MINOR CIVIL DIV. <sup>1</sup>
■ ■ ■ ■ ■	Incorporated Place <sup>1</sup>
■ ■ ■ ■ ■	Census Designated Place <sup>2</sup>
—	Voting District
● ● ● ● ●	SLD-Senate
▲ ▲ ▲ ▲ ▲	SLD-House
□ □ □ □ □	Military
□ □ □ □ □	Inset
□ □ □ □ □	Out Area

Abbreviation Reference: AIR - American Indian Reservation; SDAISA - State Designated American Indian Statistical Area

<sup>1</sup> A "\*" following a place name indicates that the place is coterminous with a MCD. A "-" indicates that the place is also a false MCD. In both cases, the MCD name is shown only when it differs from the place name.  
<sup>2</sup> A "\*" following a VTD code indicates an actual voting district. Its absence indicates that the VTD is a pseudo voting district or no information is available as to its status.

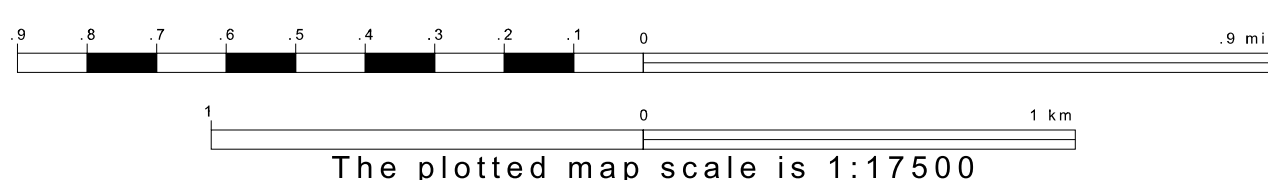
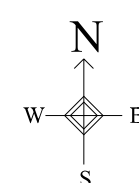
Voting Districts

Code	Name
11*	Owensville Ward1
12*	Owensville Ward2
16	RuralCanaanBn 111 Voting District
17*	RuralCanaanBn 112 Voting District
21*	Tajuee Voting District

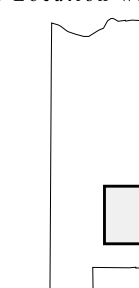


38 258705N  
91 505196W

38 258705N  
91 357565W



Sheet Location within County



Key to Adjacent Sheets

5	6
7	8
9	10

ST: Missouri (29)  
 COU: Gasconade (073)  
 SHEET 8 OF 10 PARENT SHEETS

