

MSDIS Update – September 2025

New Data

- The individual DEM and LAZ tiles for the USGS SMO 11 County LiDAR collection have been added to the Latest Available MO LiDAR Index of The Missouri Map. These new files can now be downloaded individually. An image service has not yet been deployed. See Appendix I for a rough map of the current area of the collection.

Updated Data

- Missouri Dept of Conservation Trails
- HB1 Missouri Congressional Districts 2025
- MoDOT 2025 September Update
 - MoDOT Routes
 - MoDOT Arcs
 - MoDOT Functional Classes
 - MoDOT Commuter Lots
 - MoDOT Emergency Reference Markers
 - MoDOT Rest Areas

MSDIS General News

MSDIS/OGI Funding MOA

I am very pleased to report that I am currently up to my eyeballs in resumes for both the GIS Specialist I and GIS Specialist II positions. At first review, we have a fantastic pool of candidates for both roles and I am excited to take a closer look at our options. I want to thank everyone who helped get the work out. While I hope to fill both positions as quickly as possible, my intention is to focus on the Specialist II position first because I really, really, really want organizing our LiDAR data to be someone else's problem.

As a testament to how real the situation is getting, I can confirm that my order for new laptops and monitors was placed on Monday.

NSGIC 2025

I was equally pleased to attend the 2025 NSGIC Annual Meeting alongside Katilin Belk and David Nykodym. It is truly remarkable how many new ideas I'm still chewing on in the weeks since we returned from the conference. Not that there was ever any doubt, but Katilin gave a really wonderful presentation towards the end of the conference that was well received by the audience.

PS: I walked into a BBQ restaurant just as the Vandy football team was walking out. So that was pretty cool.

State Training

MSDIS will host its first state GIS training exercise on 10 November 2025. This will be a trail run of what I hope will turn into a very successful permanent addition to MSDIS' list of responsibilities. The workshop will focus on very basic, beginner-friendly GIS tasks and workflows. I'd like to thank Peyton Smith for her continued work on the exercises that will be featured during the event.

Other Training

Several non-state employees have already reached out to me about getting their own training events started. Once we have a good feel for the process, MSDIS is 100% open to the idea of expanding the audience. I anticipate that we will need to work very closely with the RPCs, statewide GIS organizations, and MGISAC in order to get the word out once we do offer more3 courses, but I look forward to that collaboration.

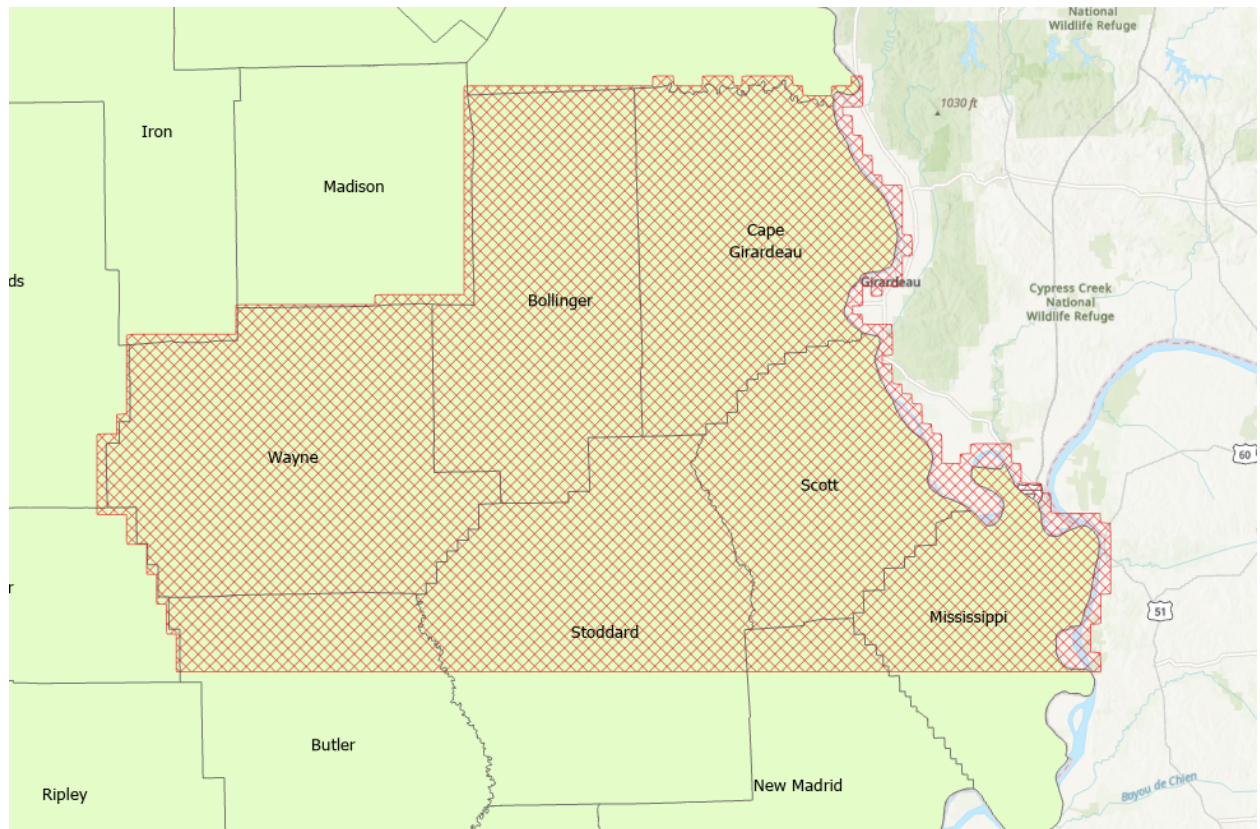
Reference Maps

Rachel Riley and Joshua Stender continue to refine drafts for our early reference mapping products. As you can well imagine, there is no easy way to develop a mapping standard for a state as diverse as Missouri, so this process has taken on a life of its own. I'm very impressed with their early efforts, though, and I believe we're close to having a rough draft ready to share with a select number of intended recipients

MSDIS Downtime

No downtime was reported in September 2025.

Appendix I – New LiDAR Download Availability



How You Can Support MSDIS

Donate Directly to MSDIS

- If you or your company would like to help support end-of-year awards for my undergraduate interns, the [MSDIS Excellence Fund](#), is open to the public and able to accept donations. As MSDIS' place in the world continues to rapidly expand and my attention is pulled in several different directions, my cadre of students are being asked to do more and more complex work. Even a small donation to the Excellence Fund helps provide Team MSDIS with some well-earned bagels and coffee.

Send of Letter of Support to Mizzou

- Let's face it, Mizzou is a big place and MSDIS doesn't have a lot of time to advertise. If you think we're doing a good job, or even just a solidly okay job, fire off an email to the [President's Office](#) or to the [Dean of Arts and Sciences](#).

Share Your Data With MSDIS

- MSDIS doesn't just deal in 6" resolution imagery. If your town/city/county/regional planning committee/state agency/whatever has some cool data that can be shared with the public, send it over! If I get enough local data, I can either add a new section to the current Hub site or spin up a whole new clearinghouse just for smaller datasets.

Write Your Metadata

- All the cool kids write their metadata.

Support the NG911 Data Collection

- NG911 data will likely be the next great challenge for MSDIS, but it is also an incredibly important leap forward for Missouri's GIS data catalog. If you can, [please submit your data to the program](#).

Support Aerial Photography and LiDAR Collections

- I don't love the idea of a whole new aerial photography collection while I'm still finishing up work on the last one, but it is impossible to overstate the value of current, high-resolution imagery and LiDAR data. If your town/city/county/regional planning committee/state agency/whatever is interested in helping support the cost of another collection, please reach out to the MGISAC.

Support MGISAC

- You came to the conference, so you might as well come to the monthly meetings! MGISAC meetings are open to anyone who wants to attend and cover a range of topics including OGI activities, data development plans, GIS-related legislation, and the occasional guest speaker. If you're interested in attending, please email MSDIS for an invite.