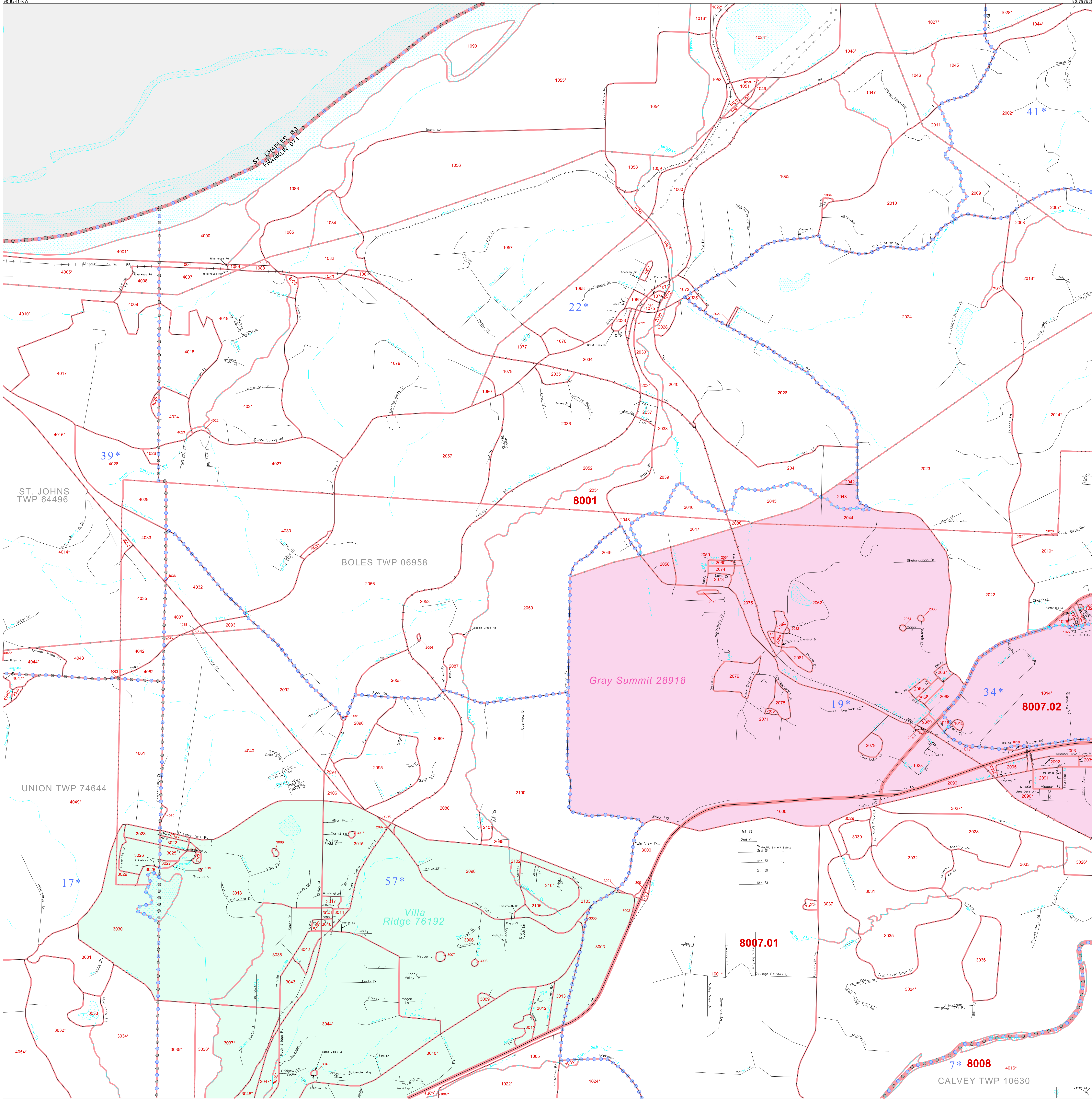


P. L. 94-171 COUNTY BLOCK MAP (CENSUS 2000)

38 555761N
90 924148W

38 555761N
90 797583W



GEOGRAPHIC AREAS LEGEND

SYMBOL	NAME STYLE
*****	INTERNATIONAL
//////	STATE
■■■■■	COUNTY
●●●●●	MINOR CIVIL DIV.
Yellow box	Incorporated Place ¹
Pink box	Census Designated Place ²
Dashed line	Corporate Offset Boundary
Blue dashed line	Voting District ³
Red line	Census Tract
Blue dashed line	BLOCK ³
Blue dashed line	Military
Inset box	Inset
Out Area box	Out Area

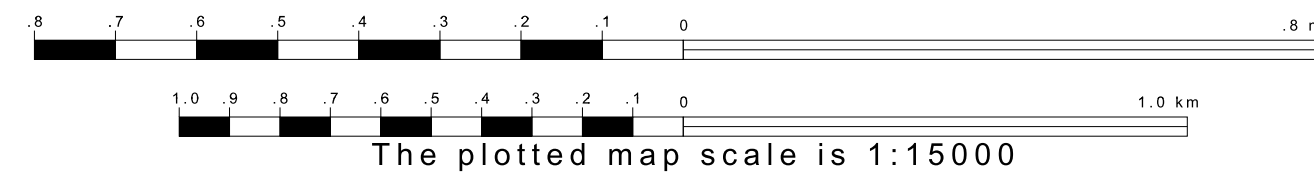
¹ A "*" following a place name indicates that the place is coterminous with a MCD. A "*" indicates that the place is also a false MCD. In both cases, the MCD name is shown only when it differs from the place name.

² A "*" following a VTD code indicates an actual voting district. Its absence indicates that the VTD is a pseudo voting district or no information is available as to its status.

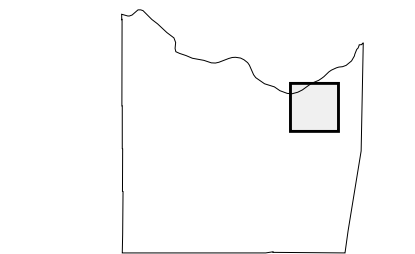
³ A "*" following a block number indicates that the block number is repeated elsewhere in the block.

38 456233N
90 924148W

38 456233N
90 797583W



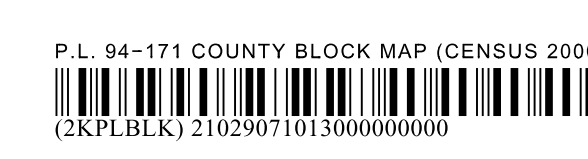
Sheet Location within County



Key to Adjacent Sheets

6	7	8
12	13	14
18	19	20

ST: Missouri (29)
COU: Franklin (071)
SHEET 13 OF 32 PARENT SHEETS



All legal boundaries and names are as of January 1, 2000. The boundaries shown on this map are for Census Bureau statistical data collection and tabulation purposes only; their depiction and designation for statistical purposes does not constitute a determination of jurisdictional authority or rights of ownership or entitlement. U.S. DEPARTMENT OF COMMERCE Economics and Statistics Administration U.S. Census Bureau