

P. L. 94-171 COUNTY BLOCK MAP (CENSUS 2000)

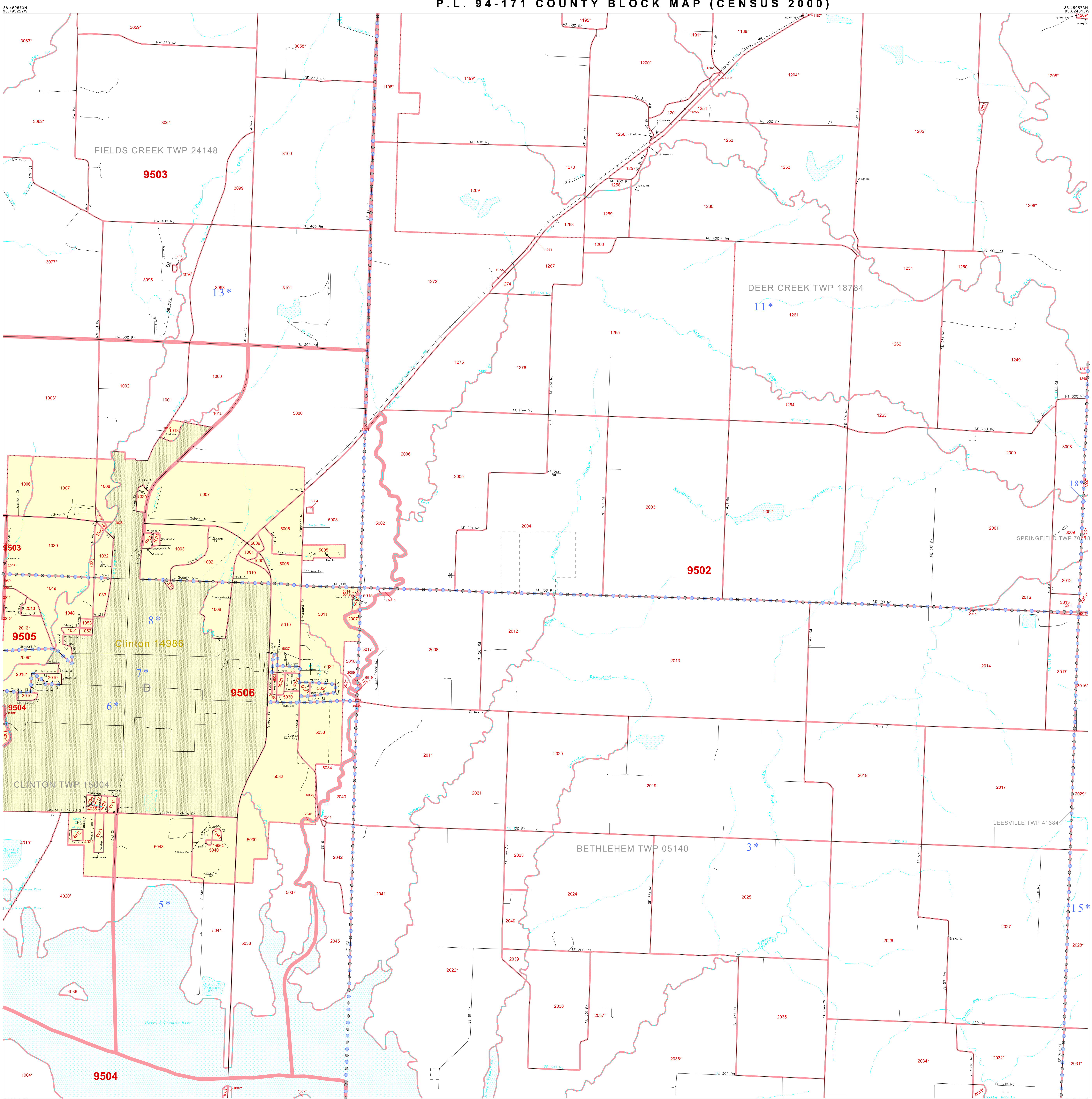
GEOGRAPHIC AREAS LEGEND

- | | |
|--------|--------------------------------------|
| SYMBOL | NAME STYLE |
| ***** | INTERNATIONAL |
| ////// | STATE |
| ■■■■■ | COUNTY |
| ●●●●● | MINOR CIVIL DIV. ¹ |
| | Incorporated Place ² |
| | Census Designated Place ² |
| | Corporate Offset Boundary |
| ●●●●● | Voting District ³ |
| ■■■■■ | Census Tract |
| ■■■■■ | BLOCK ³ |

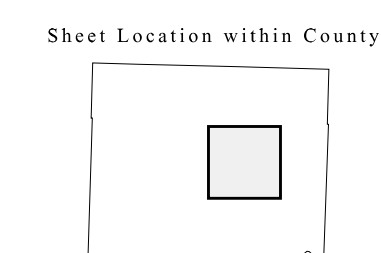
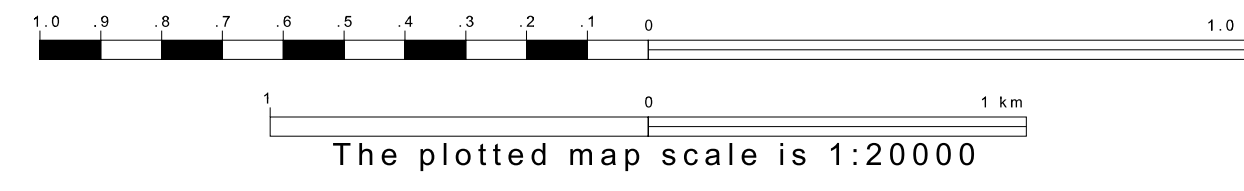
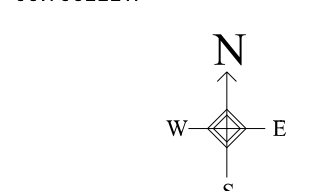
1 A "*" following a place name indicates that the place is coterminous with a MCD. A "-" indicates that the place is also a false MCD. In both cases, the MCD name is shown only when it differs from the place name.

2 A "*" following a VTD code indicates an actual voting district. Its absence indicates that the VTD is a pseudo voting district or no information is available as to its status.

3 A "*" following a block number indicates that the block number is repeated elsewhere in the block.



Inset Out Area



Key to Adjacent Sheets

2	3	4
6	7	8
10	11	12

ST: Missouri (29)
 COU: Henry (083)
 SHEET 7 OF 12 PARENT SHEETS

All legal boundaries and names are as of January 1, 2000. The boundaries shown on this map are for Census Bureau statistical data collection and tabulation purposes only; their depiction and designation for statistical purposes does not constitute a determination of jurisdictional authority or rights of ownership or entitlement. U.S. DEPARTMENT OF COMMERCE Economics and Statistics Administration U.S. Census Bureau

