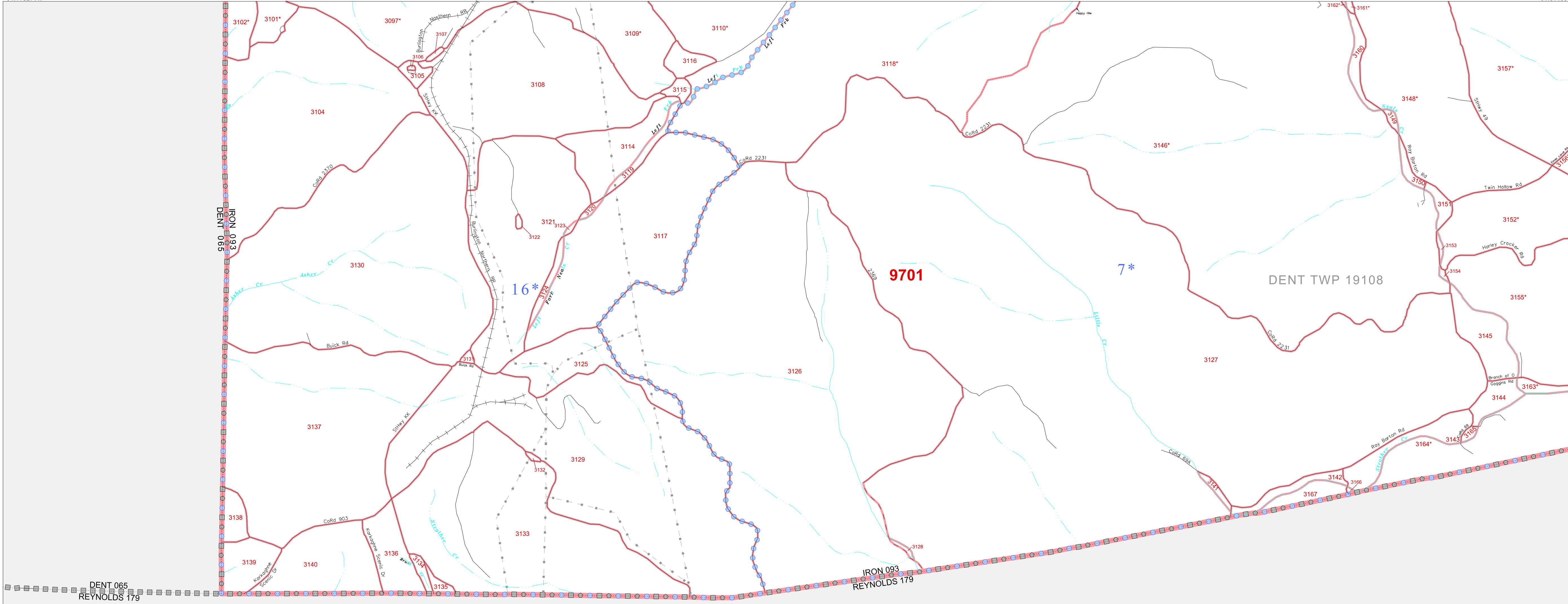


P. L. 94-171 COUNTY BLOCK MAP (CENSUS 2000)

37 638201N
91.178271W

37 638201N
91.011689W



GEOGRAPHIC AREAS LEGEND

SYMBOL	NAME STYLE
*****	INTERNATIONAL
//////	STATE
■■■■■	COUNTY
■■■■■	MINOR CIVIL DIV. ¹
■■■■■	Incorporated Place ¹
■■■■■	Census Designated Place ²
-----	Corporate Offset Boundary
●●●●●	Voting District ³
—————	Census Tract
—————	BLOCK ³
■	Military

Inset Out Area

1 A "*" following a place name indicates that the place is coterminous with a MCD. "A*" indicates that the place is also a false MCD. In both cases, the MCD name is shown only when it differs from the place name.

2 A "*" following a VTD code indicates an actual voting district. Its absence indicates that the VTD is a pseudo voting district or no information is available as to its status.

3 A "*" following a block number indicates that the block number is repeated elsewhere in the block.

DENT 065
REYNOLDS 179

IRON 093
REYNOLDS 179

DENT TWP 19108

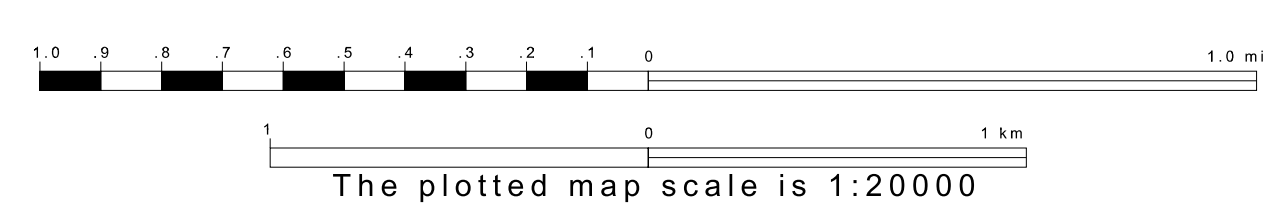
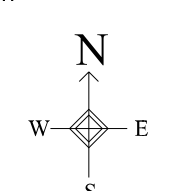
9701

7*

16*

37 505462N
91.178271W

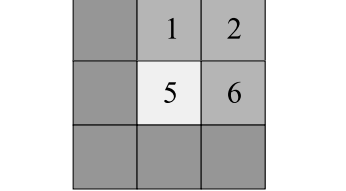
37 505462N
91.011689W



Sheet Location within County



Key to Adjacent Sheets



ST: Missouri (29)
COU: Iron (093)
SHEET 5 OF 12 PARENT SHEETS

All legal boundaries and names are as of January 1, 2000. The boundaries shown on this map are for Census Bureau statistical data collection and tabulation purposes only; their depiction and designation for statistical purposes does not constitute a determination of jurisdictional authority or rights of ownership or entitlement. U.S. DEPARTMENT OF COMMERCE Economics and Statistics Administration U.S. Census Bureau

