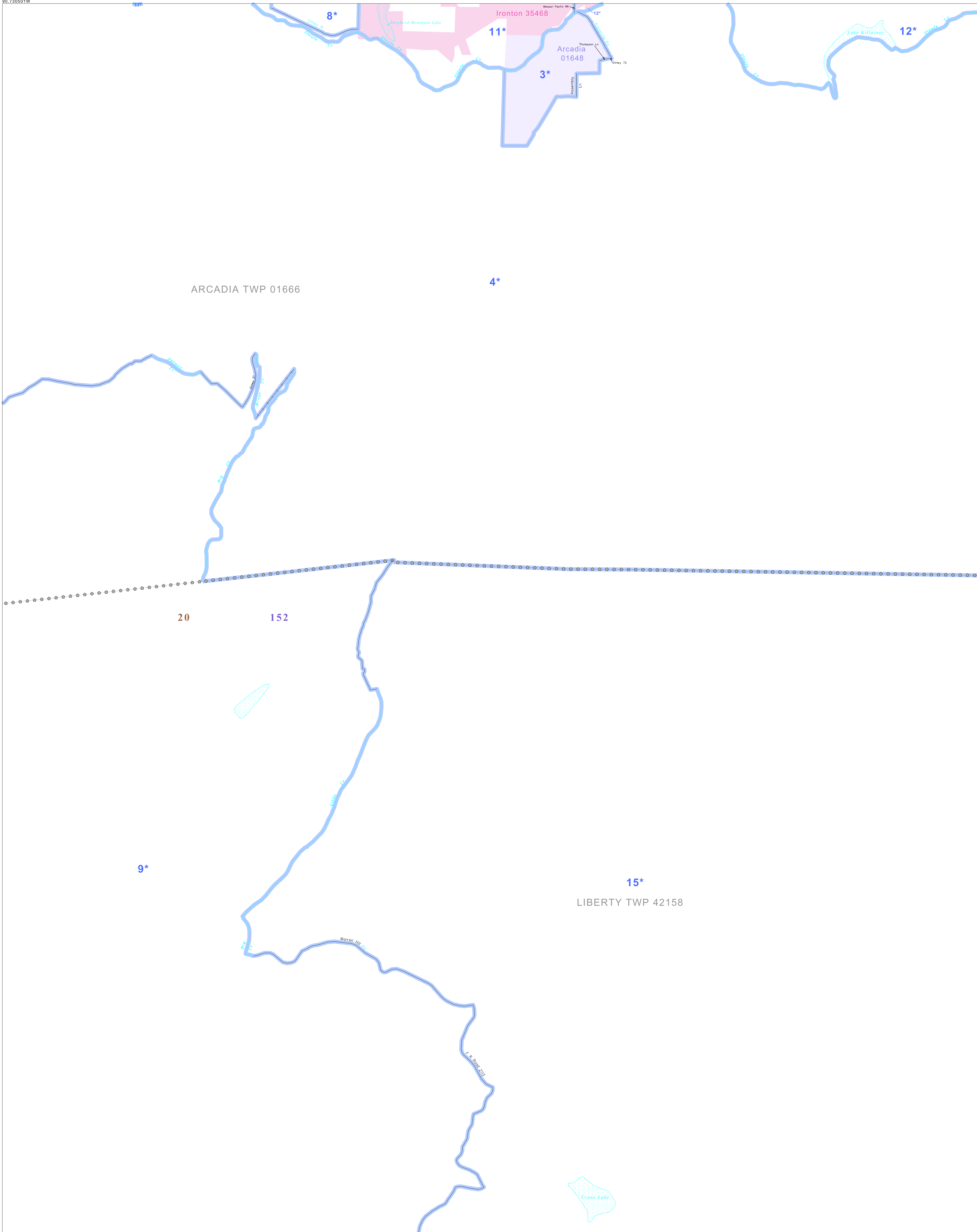


P.L. 94-171 VOTING DISTRICT/STATE LEGISLATIVE DISTRICT OUTLINE MAP (CENSUS 2000)

37 586721N
90 730561W

37 586721N
90 501410W



GEOGRAPHIC AREAS LEGEND

SYMBOL	NAME STYLE
*****	INTERNATIONAL
//////	STATE
□□□□	COUNTY
○●○●	MINOR CIVIL DIV. ¹
■	Incorporated Place ¹
■	Census Designated Place ²
—	Voting District
●●●●	SLD-Senate
▲▲▲▲	SLD-House
□	Minority
□	Inset
□	Out Area

Abbreviation Reference: AIR - American Indian Reservation; SDAISA - State Designated American Indian Statistical Area

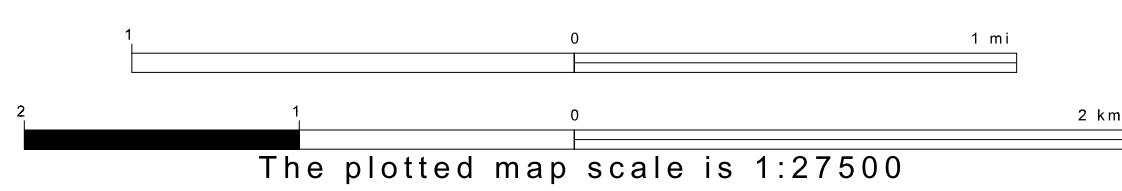
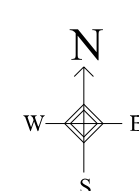
¹ A "*" following a place name indicates that the place is coterminous with a MCD. A "-" indicates that the place is also a false MCD. In both cases, the MCD name is shown only when it differs from the place name.
² A "*" following a VTD code indicates an actual voting district. Its absence indicates that the VTD is a pseudo voting district or no information is available as to its status.

Voting Districts

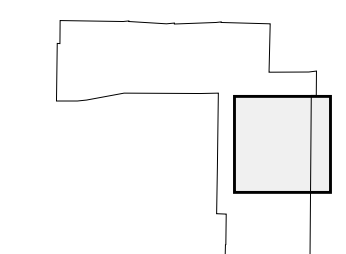
Code	Name
3*	ArcadiaCity Voting District
4*	ArcadiaRural Voting District
8*	Shrewsbury Voting District
9*	Hogan/Dunlap Voting District
11*	Ironton#1 Voting District
12*	Ironton#2 Voting District
15*	Palma Voting District

37 414205N
90 730501W

37 414205N
90 501410W



Sheet Location within County



Key to Adjacent Sheets

2	3
5	6
7	8

ST: Missouri (29)
 COU: Iron (093)
 SHEET 6 OF 8 PARENT SHEETS

