

P. L. 94-171 COUNTY BLOCK MAP (CENSUS 2000)

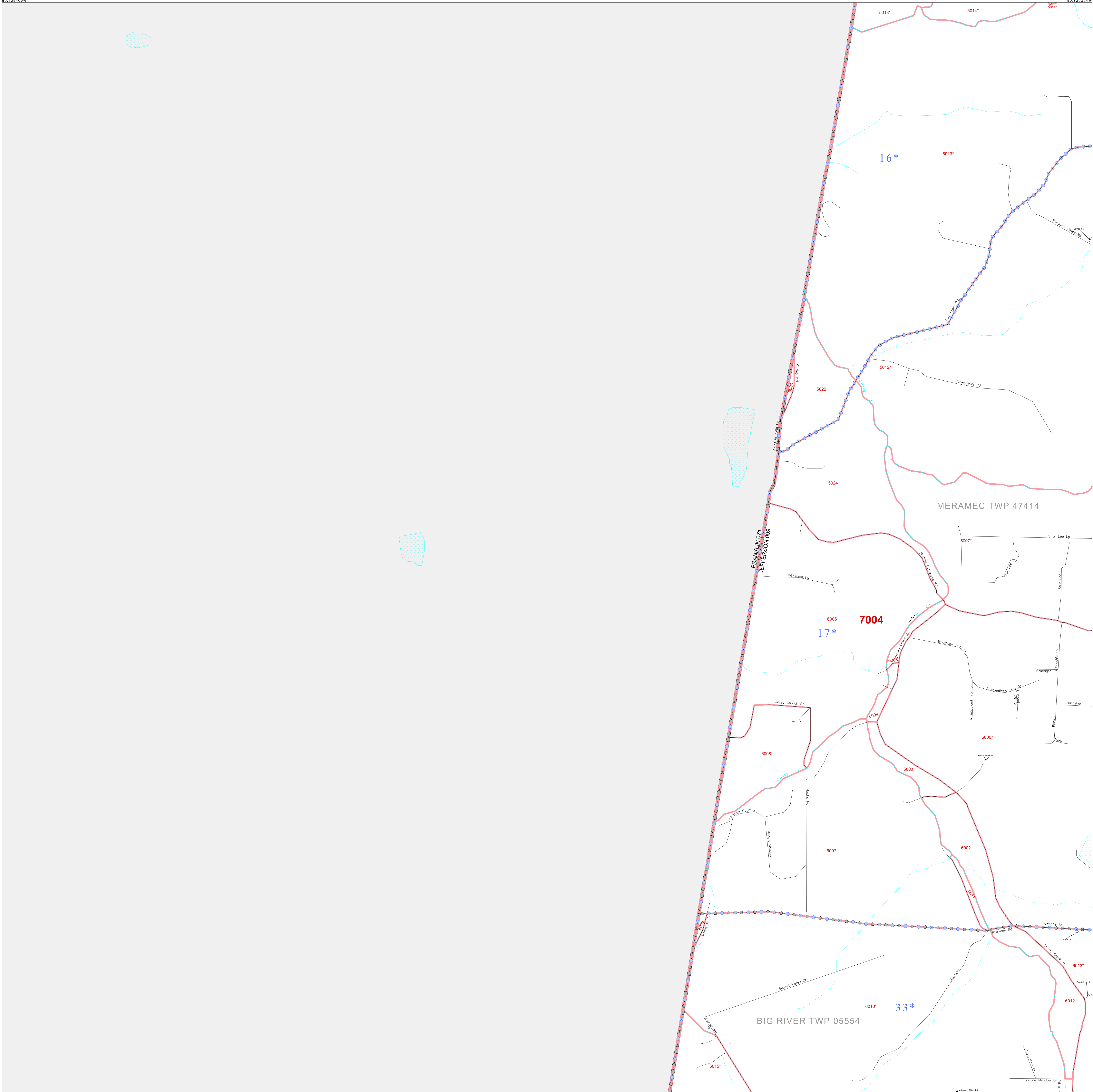
38 385449N
90 809406W

38 385449N
90 729294W

GEOGRAPHIC AREAS LEGEND

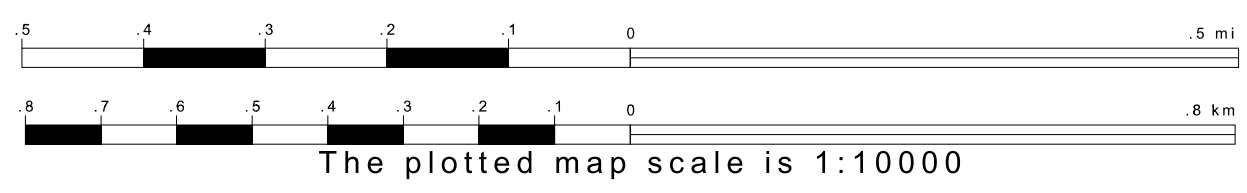
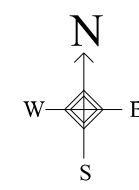
SYMBOL	NAME STYLE
☆☆☆☆	INTERNATIONAL
//////	STATE
□□□□	COUNTY
□□□□	MINOR CIVIL DIV. ¹
■ ■ ■ ■	Incorporated Place ²
■ ■ ■ ■	Census Designated Place ²
.....	Corporate Offset Boundary
●●●●	Voting District ³
—	Census Tract
—	BLOCK ³
■ ■ ■ ■	Military
Inset	Out Area

1 A "*" following a place name indicates that the place is coterminous with a MCD. A "-" indicates that the place is also a false MCD. In both cases, the MCD name is shown only when it differs from the place name.
 2 A "*" following a VTD code indicates an actual voting district. Its absence indicates that the VTD is a pseudo voting district or no information is available as to its status.
 3 A "*" following a block number indicates that the block number is repeated elsewhere in the block.

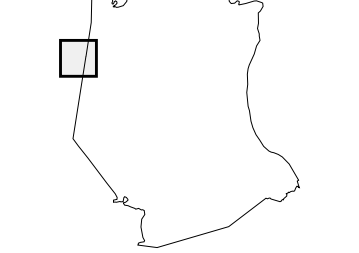


38 319088N
90 809406W

38 319088N
90 729294W



Sheet Location within County



Key to Adjacent Sheets

7	8
13	14
19	20

ST: Missouri (29)
 COU: Jefferson (099)
 SHEET 13 OF 46 PARENT SHEETS

