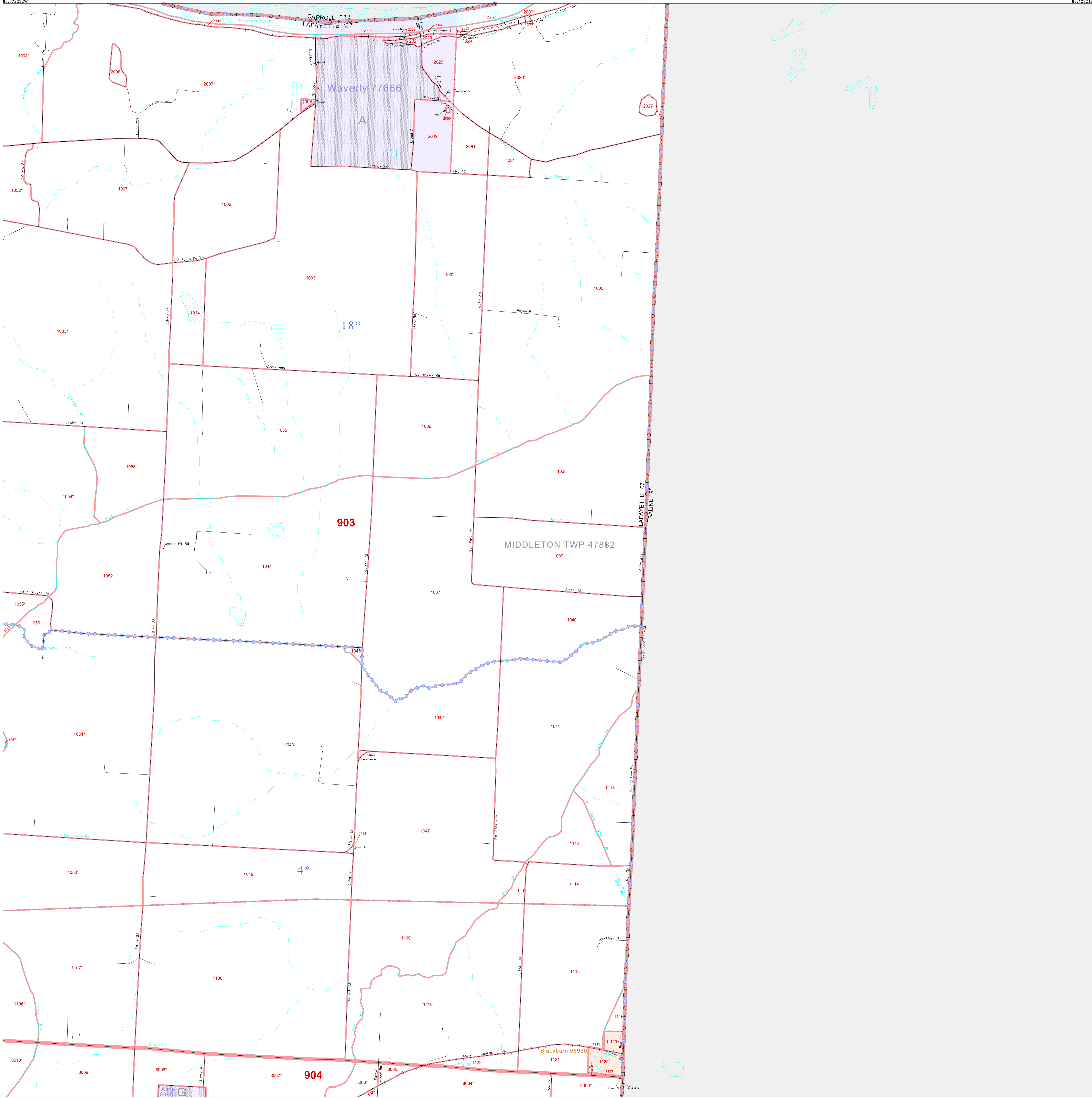


P. L. 94-171 COUNTY BLOCK MAP (CENSUS 2000)

39 216668N
93.872232W

39 216668N
93.423218W



GEOGRAPHIC AREAS LEGEND

| SYMBOL | NAME STYLE |
|----------|--------------------------------------|
| ***** | INTERNATIONAL |
| ////// | STATE |
| ■■■■■ | COUNTY |
| ●●●●● | MINOR CIVIL DIV. ¹ |
| ■■■■■ | Incorporated Place ¹ |
| ■■■■■ | Census Designated Place ¹ |
| ----- | Corporate Offset Boundary |
| ●●●●● | Voting District ² |
| ■■■■■ | Census Tract ³ |
| ■■■■■ | BLOCK ³ |
| ■■■■■ | Military |
| Inset | Inset |
| Out Area | Out Area |

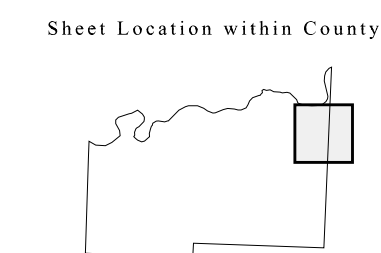
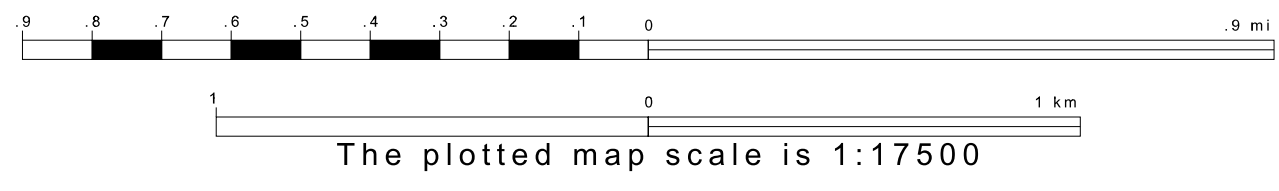
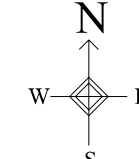
1 A "*" following a place name indicates that the place is coterminous with a MCD. "A*" indicates that the place is also a false MCD. In both cases, the MCD name is shown only when it differs from the place name.

2 A "*" following a VTD code indicates an actual voting district. Its absence indicates that the VTD is a pseudo voting district or no information is available as to its status.

3 A "*" following a block number indicates that the block number is repeated elsewhere in the block.

39 160753N
93.872232W

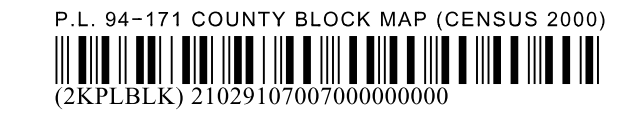
39 160753N
93.423218W



Key to Adjacent Sheets

| | |
|----|----|
| 1 | 2 |
| 6 | 7 |
| 11 | 12 |

ST: Missouri (29)
COU: Lafayette (107)
SHEET 7 OF 17 PARENT SHEETS



All legal boundaries and names are as of January 1, 2000. The boundaries shown on this map are for Census Bureau statistical data collection and tabulation purposes only; their depiction and designation for statistical purposes does not constitute a determination of jurisdictional authority or rights of ownership or entitlement. U.S. DEPARTMENT OF COMMERCE Economics and Statistics Administration U.S. Census Bureau