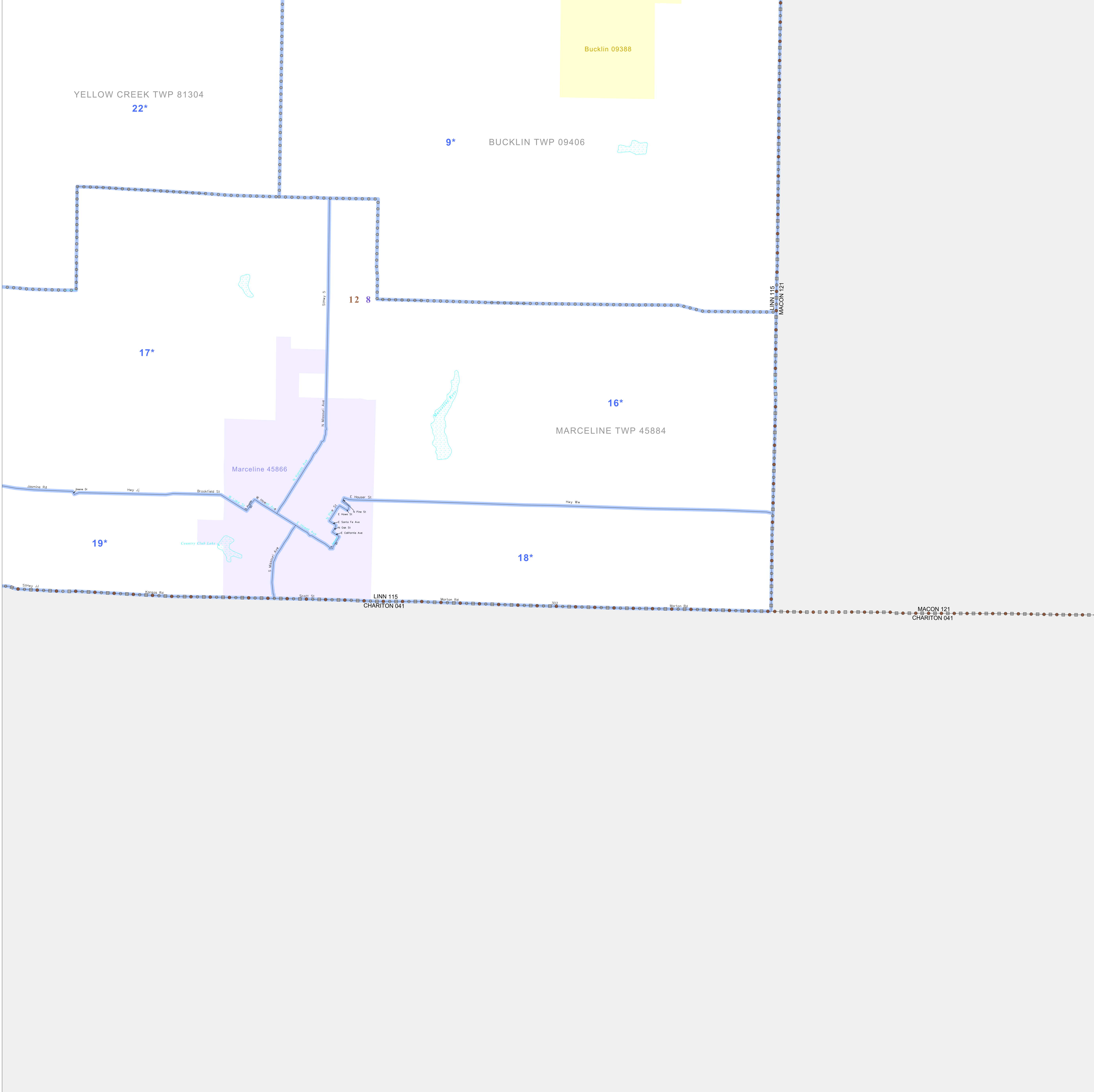


P.L. 94-171 VOTING DISTRICT/STATE LEGISLATIVE DISTRICT OUTLINE MAP (CENSUS 2000)

39 785039N  
93.052831W

39 785039N  
92.796210W



**GEOGRAPHIC AREAS LEGEND**

SYMBOL	NAME STYLE
*****	INTERNATIONAL
//////	STATE
□□□□□□	COUNTY
○ ○ ○ ○ ○	MINOR CIVIL DIV <sup>1</sup>
■ ■ ■ ■ ■	Incorporated Place <sup>1</sup>
■ ■ ■ ■ ■	Census Designated Place <sup>1</sup>
— — — — —	Voting District <sup>2</sup>
● ● ● ● ●	SLD—Senate
▲ ▲ ▲ ▲ ▲	SLD—House

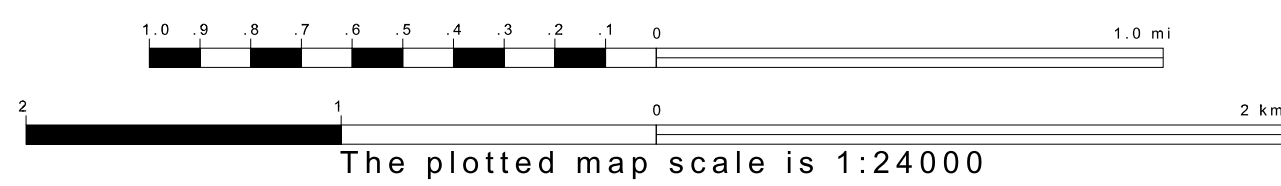
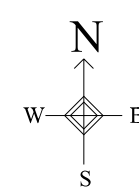
Abbreviation Reference: AIR = American Indian Reservation; SDAISA = State Designated American Indian Statistical Area  
<sup>1</sup> A "\*" following a place name indicates that the place is coterminous with a MCD. A "-" indicates that the place is also a false MCD. In both cases, the MCD name is shown only when it differs from the place name.  
<sup>2</sup> A "\*" following a VTD code indicates an actual voting district. Its absence indicates that the VTD is a pseudo voting district or no information is available as to its status.

**Voting Districts**

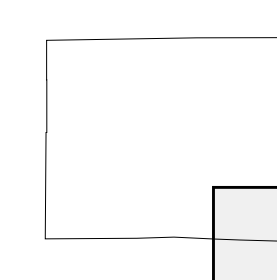
Code	Name
9*	Bucklin Voting District
16*	Marceline#4 1 Voting District
17*	Marceline#4 2 Voting District
18*	Marceline#4 3 Voting District
19*	Marceline#4 4 Voting District
22*	YellowCreek Voting District

39 822818N  
93.052831W

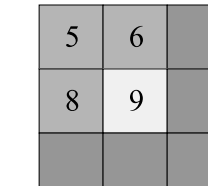
39 822818N  
92.796210W



Sheet Location within County



Key to Adjacent Sheets



ST: Missouri (29)  
COU: Linn (115)  
SHEET 9 OF 9 PARENT SHEETS

