

P.L. 94-171 COUNTY BLOCK MAP (CENSUS 2000)

38 350690N  
91 914163W

38 350690N  
91 746929W

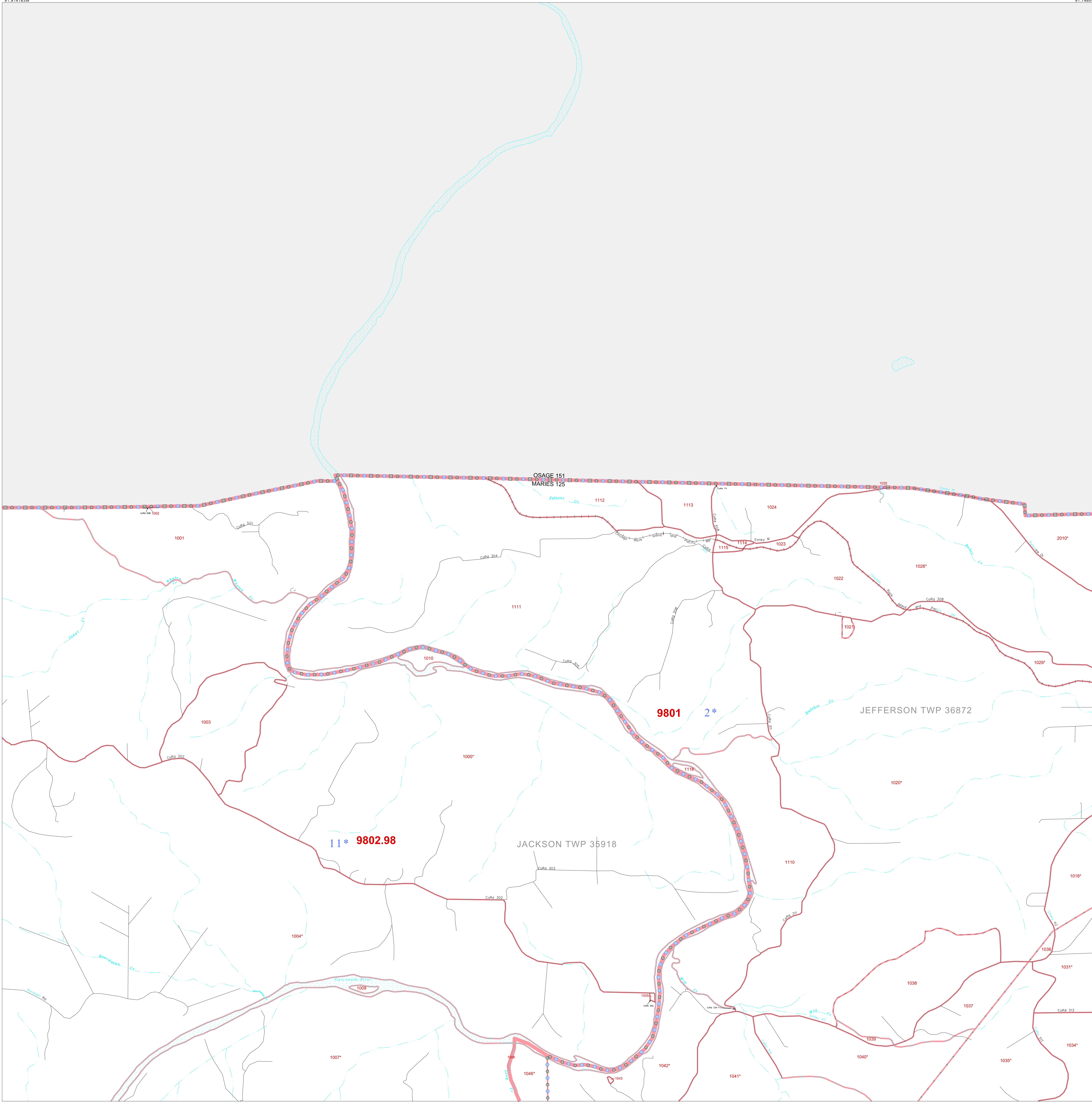
**GEOGRAPHIC AREAS LEGEND**

SYMBOL	NAME STYLE
*****	INTERNATIONAL
//////	STATE
□□□□	COUNTY
○ ○ ○ ○	MINOR CIVIL DIV <sup>1</sup>
■ ■ ■ ■	Incorporated Place <sup>2</sup>
■ ■ ■ ■	Census Designated Place <sup>2</sup>
.....	Corporate Offset Boundary
● ● ● ●	Voting District <sup>3</sup>
— — — —	Census Tract
— — — —	BLOCK <sup>3</sup>
■ ■ ■ ■	Military
Inset	Out Area

1 A "\*" following a place name indicates that the place is coterminous with a MCD. A "-" indicates that the place is also a false MCD. In both cases, the MCD name is shown only when it differs from the place name.

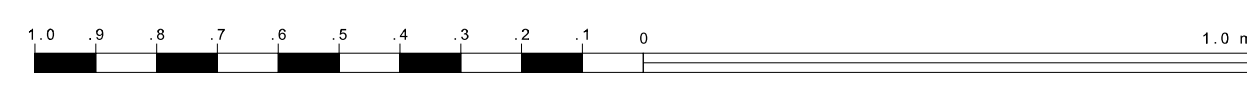
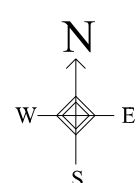
2 A "\*" following a VTD code indicates an actual voting district. Its absence indicates that the VTD is a pseudo voting district or no information is available as to its status.

3 A "\*" following a block number indicates that the block number is repeated elsewhere in the block.



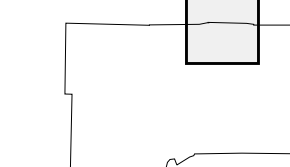
38 217975N  
91 914163W

38 217975N  
91 746929W



The plotted map scale is 1:20000

Sheet Location within County



Key to Adjacent Sheets

2	3	4
6	7	8

ST: Missouri (29)  
COU: Maries (125)  
SHEET 3 OF 12 PARENT SHEETS

