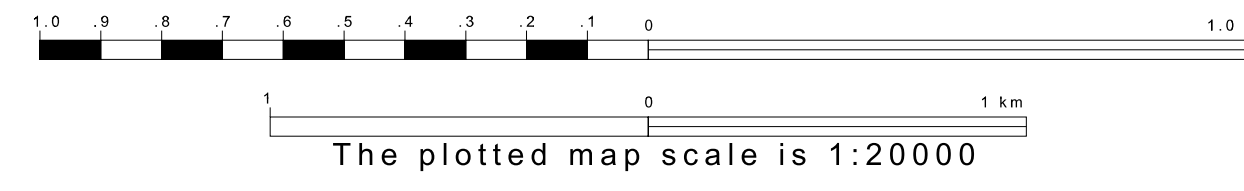
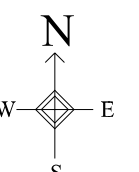


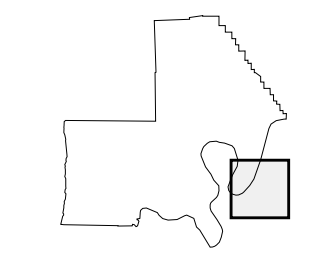
GEOGRAPHIC AREAS LEGEND

SYMBOL	NAME STYLE
*****	INTERNATIONAL
///////	STATE
■■■■■	COUNTY
●●●●●	MINOR CIVIL DIV <sup>1</sup>
Yellow box	Incorporated Place <sup>2</sup>
Light blue box	Census Designated Place <sup>2</sup>
.....	Corporate Offset Boundary
.....	Voting District <sup>3</sup>
Red line	Census Tract
Blue dashed line	Military <sup>3</sup>

1 A "\*" following a place name indicates that the place is coterminous with a MCD. A "-" indicates that the place is also a false MCD. In both cases, the MCD name is shown only when it differs from the place name.  
 2 A "\*" following a VTD code indicates an actual voting district. Its absence indicates that the VTD is a pseudo voting district or no information is available as to its status.  
 3 A "-" following a block number indicates that the block number is repeated elsewhere in the block.



Sheet Location within County



Key to Adjacent Sheets

9	10
13	14
17	

ST: Missouri (29)  
 COU: New Madrid (143)  
 SHEET 14 OF 17 PARENT SHEETS

