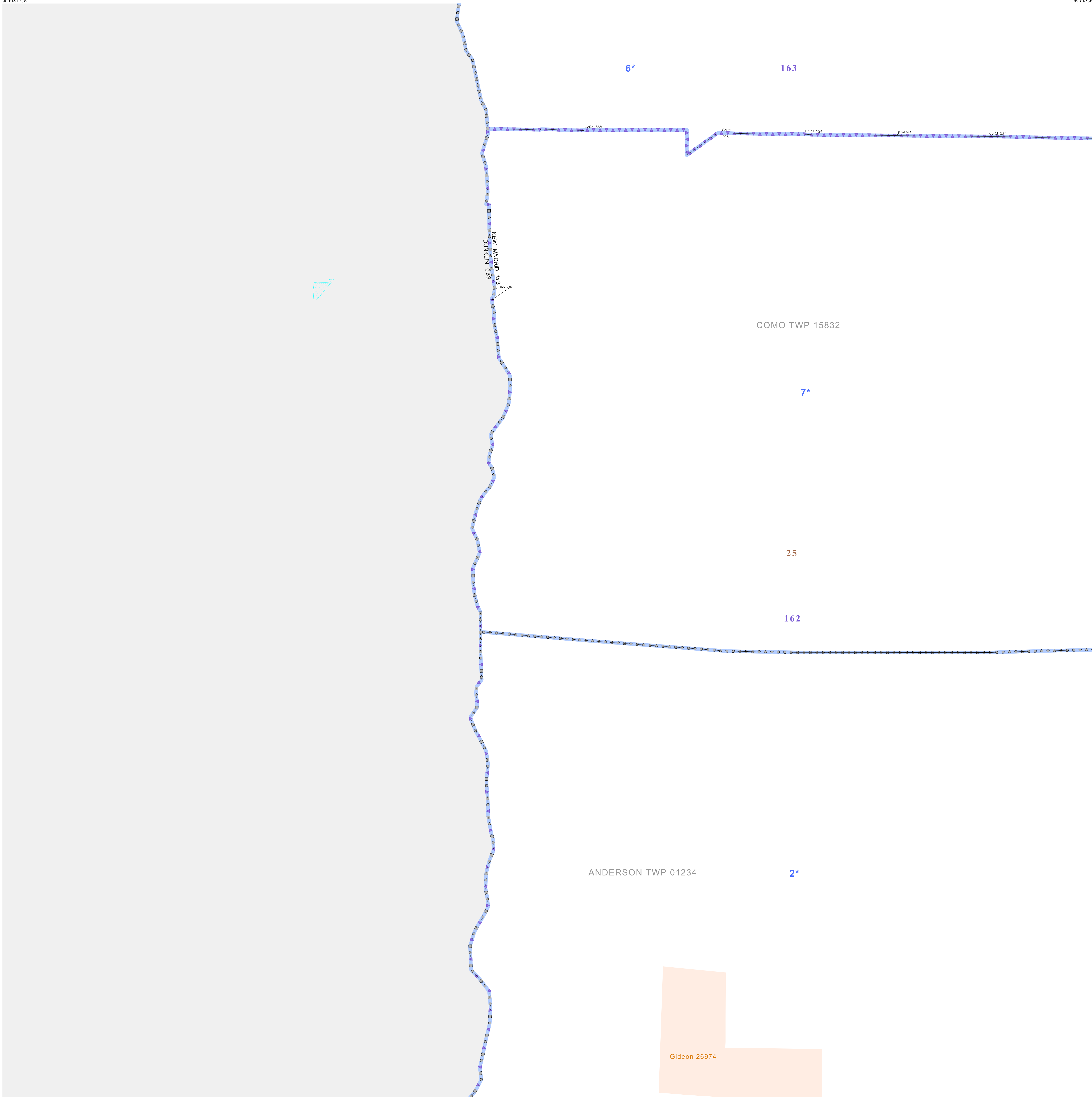


P.L. 94-171 VOTING DISTRICT/STATE LEGISLATIVE DISTRICT OUTLINE MAP (CENSUS 2000)

36 603844N  
90 045170W

36 603844N  
90 045170W



GEOGRAPHIC AREAS LEGEND

SYMBOL	NAME STYLE
*****	INTERNATIONAL
//////	STATE
■■■■■	COUNTY
○○○○○	MINOR CIVIL DIV <sup>1</sup>
■■■■■	Incorporated Place <sup>1</sup>
■■■■■	Census Designated Place <sup>2</sup>
■■■■■	Voting District
●●●●●	SLD-Senate
▲▲▲▲▲	SLD-House

Abbreviation Reference: AIR - American Indian Reservation; SDAISA - State Designated American Indian Statistical Area

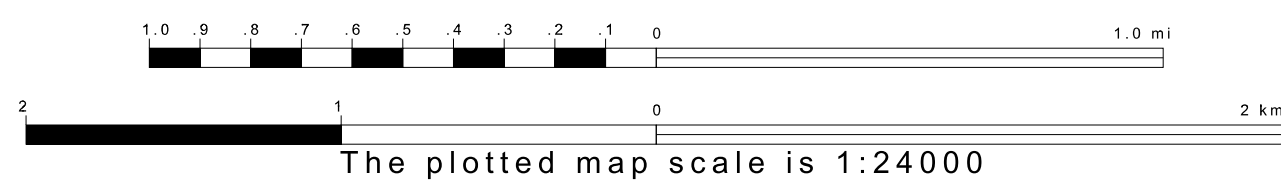
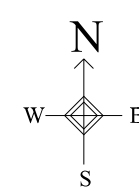
<sup>1</sup> A "\*" following a place name indicates that the place is coterminous with a MCD. A "-" indicates that the place is also a MCD. In both cases, the MCD name is shown only when it differs from the place name.  
<sup>2</sup> A "\*" following a VTD code indicates an actual voting district. Its absence indicates that the VTD is a pseudo voting district or no information is available as to its status.

Voting Districts

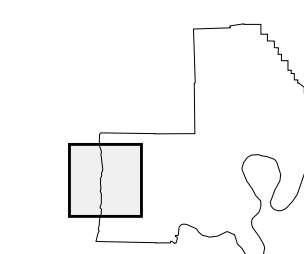
Code	Name
2*	Anderson1and2 Voting District
6*	ComoNo. 142 Voting District
7*	ComoNo. 143 Voting District

36 444533N  
90 045170W

36 444533N  
90 045170W



Sheet Location within County



Key to Adjacent Sheets

4	5
8	9
12	13

ST: Missouri (29)  
 COU: New Madrid (143)  
 SHEET 8 OF 14 PARENT SHEETS

