

P.L. 94-171 VOTING DISTRICT/STATE LEGISLATIVE DISTRICT OUTLINE MAP (CENSUS 2000)

38 603844N
89 847587W

38 603844N
89 850004W

GEOGRAPHIC AREAS LEGEND

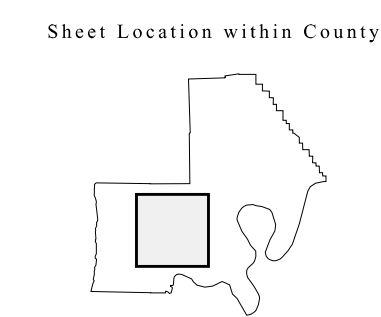
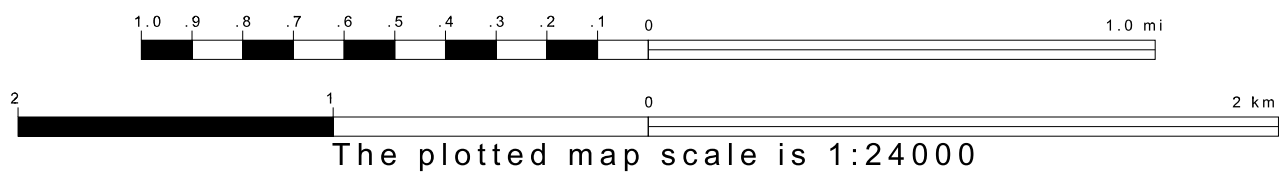
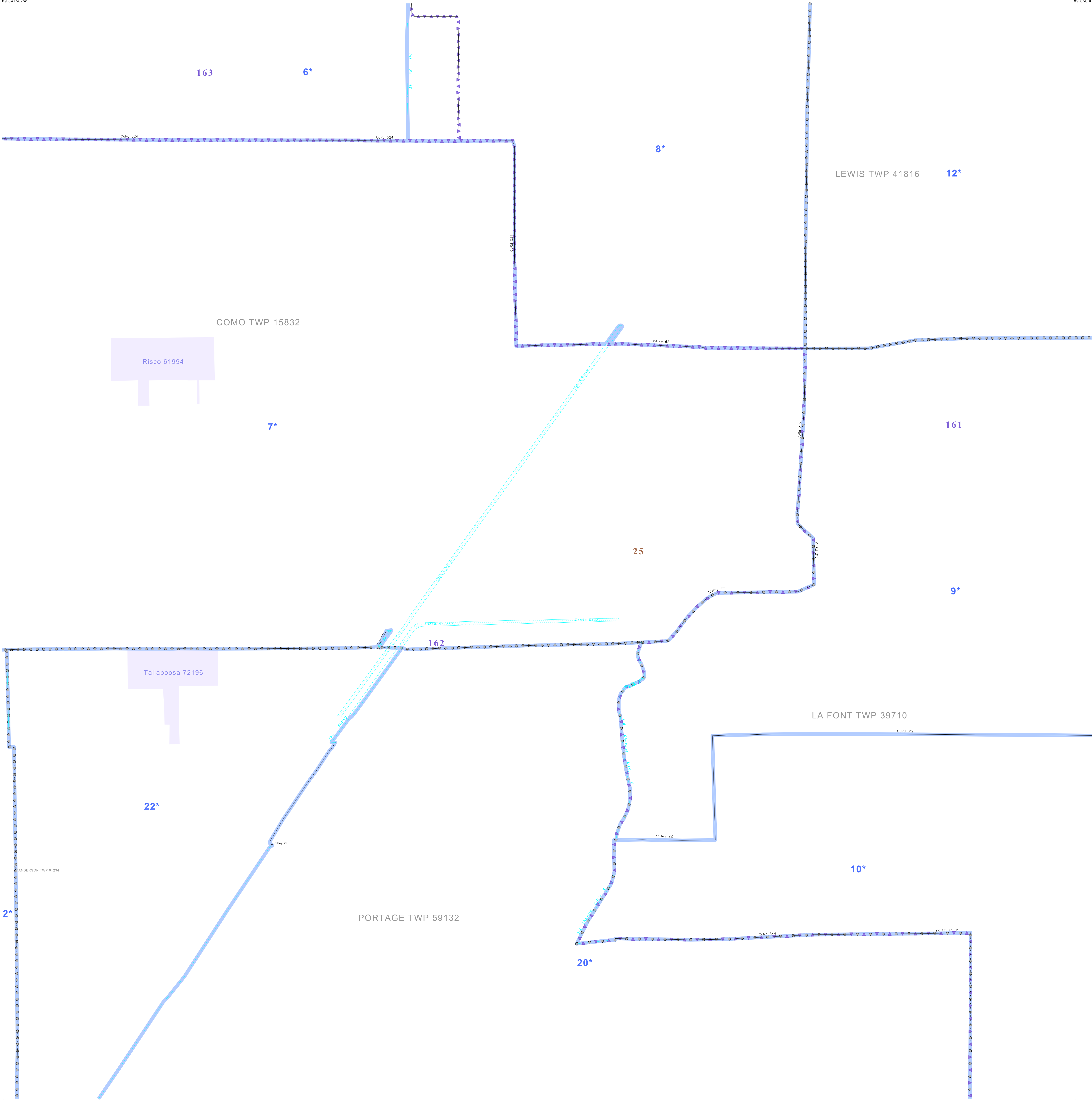
SYMBOL	NAME STYLE
*****	INTERNATIONAL
//////	STATE
□□□□□□	COUNTY
○ ○ ○ ○ ○ ○	MINOR CIVIL DIV. ¹
■ ■ ■ ■ ■ ■	Incorporated Place ¹
■ ■ ■ ■ ■ ■	Census Designated Place ¹
— — — — —	Voting District ²
● ● ● ● ● ●	SLD-Senate
▲ ▲ ▲ ▲ ▲ ▲	SLD-House

Abbreviation Reference: AIR - American Indian Reservation; SDAISA - State Designated American Indian Statistical Area

¹ A " " following a place name indicates that the place is coextensive with a MCD. A " " indicates that the place is also a MCD. In both cases, the MCD name is shown only when it differs from the place name.
² A " " following a VTD code indicates an actual voting district. Its absence indicates that the VTD is a pseudo voting district or no information is available as to its status.

Voting Districts

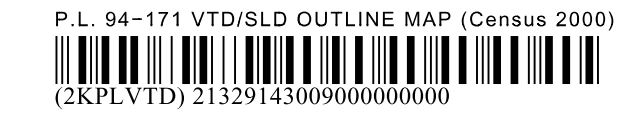
Code	Name
2*	Anderson/and2 Voting District
6*	Como/No 1&2 Voting District
7*	Como/No 3&4 Voting District
8*	Como/No 5 Voting District
9*	LaFont/No 1&2 Voting District
10*	LaFont/No 3 Voting District
12*	Lewis/No 1&2 Voting District
20*	Portage/No 1 Voting District
22*	Portage/No 3 Voting District



Key to Adjacent Sheets

4	5	6
8	9	10
12	13	14

ST: Missouri (29)
 COU: New Madrid (143)
 SHEET 9 OF 14 PARENT SHEETS



All legal boundaries and names are as of January 1, 2000. The boundaries shown on this map are for Census Bureau statistical data collection and tabulation purposes only; their depiction and designation for statistical purposes does not constitute a determination of jurisdictional authority or rights of ownership or entitlement. U.S. DEPARTMENT OF COMMERCE Economics and Statistics Administration U.S. Census Bureau