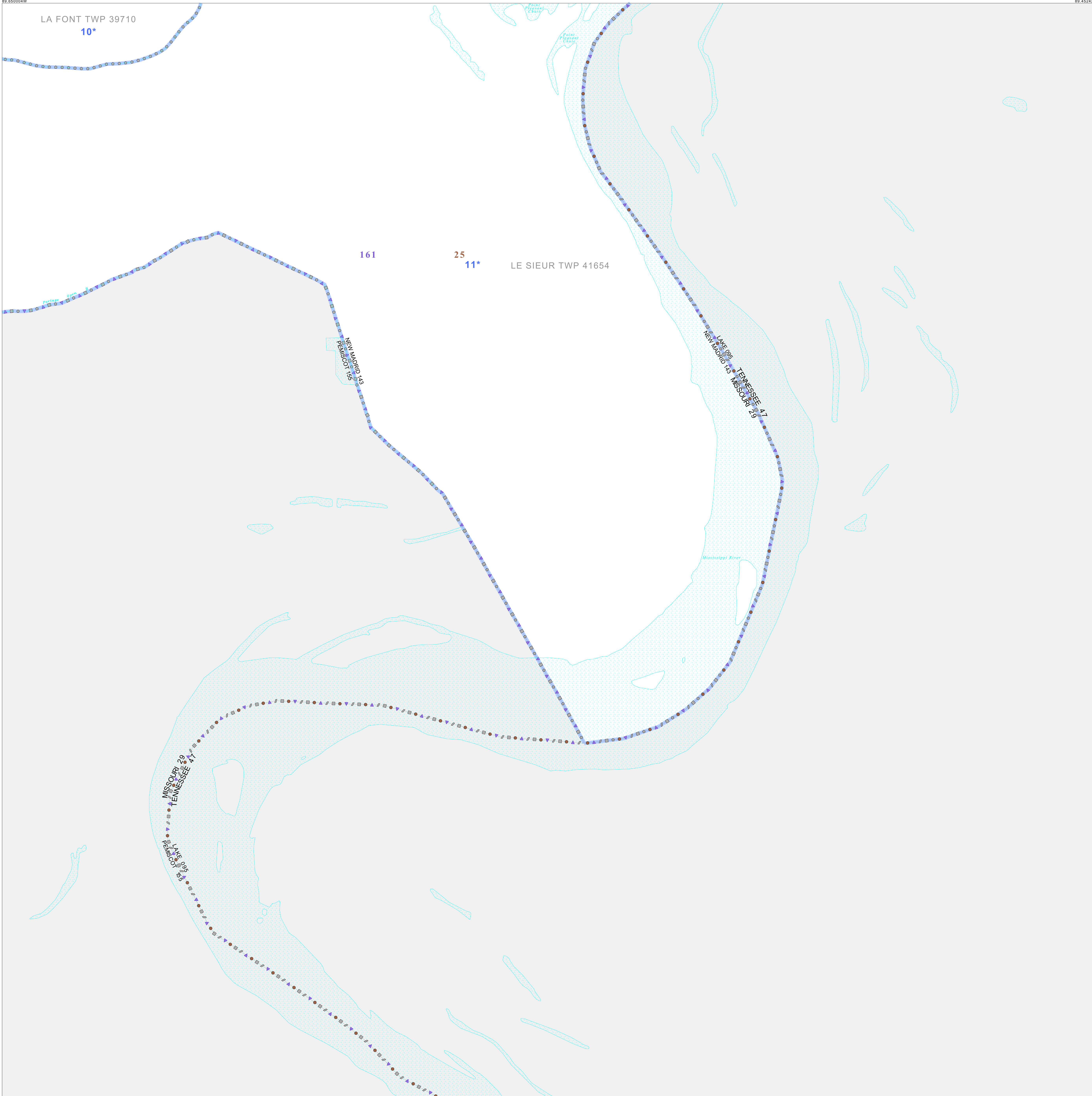


36 444533N
89 650044W

36 444533N
89 452422W



GEOGRAPHIC AREAS LEGEND

SYMBOL	NAME STYLE
*****	INTERNATIONAL
//////	STATE
□□□□	COUNTY
○	MINOR CIVIL DIV ¹
■	Incorporated Place ¹
■	Census Designated Place ¹
—	Voting District ²
●	SLD-Senate
▲	SLD-House

Abbreviation Reference: AIR - American Indian Reservation; SDAISA - State Designated American Indian Statistical Area

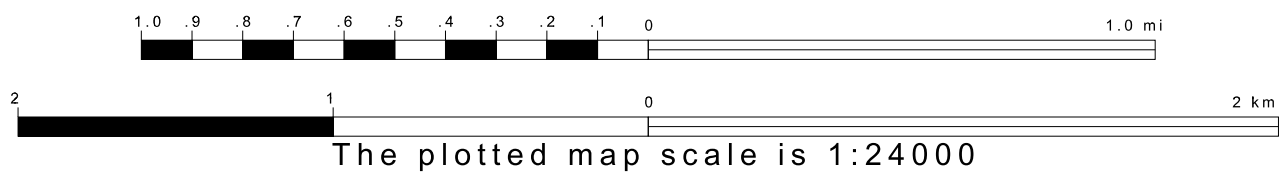
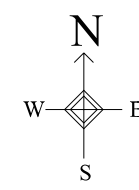
¹ A "*" following a place name indicates that the place is coterminous with a MCD. A "-" indicates that the place is also a CSD. In both cases, the MCD name is shown only when it differs from the place name.
² A "*" following a VTD code indicates an actual voting district. Its absence indicates that the VTD is a pseudo voting district or no information is available as to its status.

Voting Districts

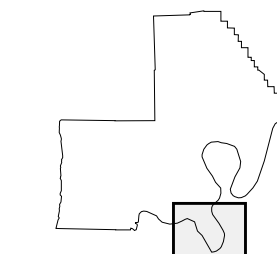
Code	Name
10*	LaFont-3 Voting District
11*	LeSieur-1 Voting District

36 285222N
89 650044W

36 285222N
89 452422W



Sheet Location within County



Key to Adjacent Sheets

9	10	11
13	14	

ST: Missouri (29)
 COU: New Madrid (143)
 SHEET 14 OF 14 PARENT SHEETS

