

INDEX FOR P.L. 94-171 VOTING DISTRICT/STATE LEGISLATIVE DISTRICT OUTLINE MAP (CENSUS 2000)

INDEX MAP LEGEND

SYMBOL	NAME STYLE
*****	INTERNATIONAL
-----	AIR (FEDERAL)
-----	Trust Land/HHL
-----	OTSA/ANVSA/TDSA
-----	TRIBAL SUBDIVISION
-----	AIR (State)
-----	SDA/SA
-----	ANRC
#####	STATE
#####	COUNTY
o-o-o-o-o	MINOR CIVIL DIV. ¹
o-o-o-o-o	Consolidated City
o-o-o-o-o	Incorporated Place ¹
o-o-o-o-o	Census Designated Place ¹
[Inset Box]	Inset
[Out Area Box]	Out Area

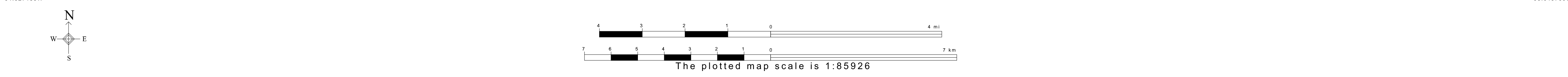
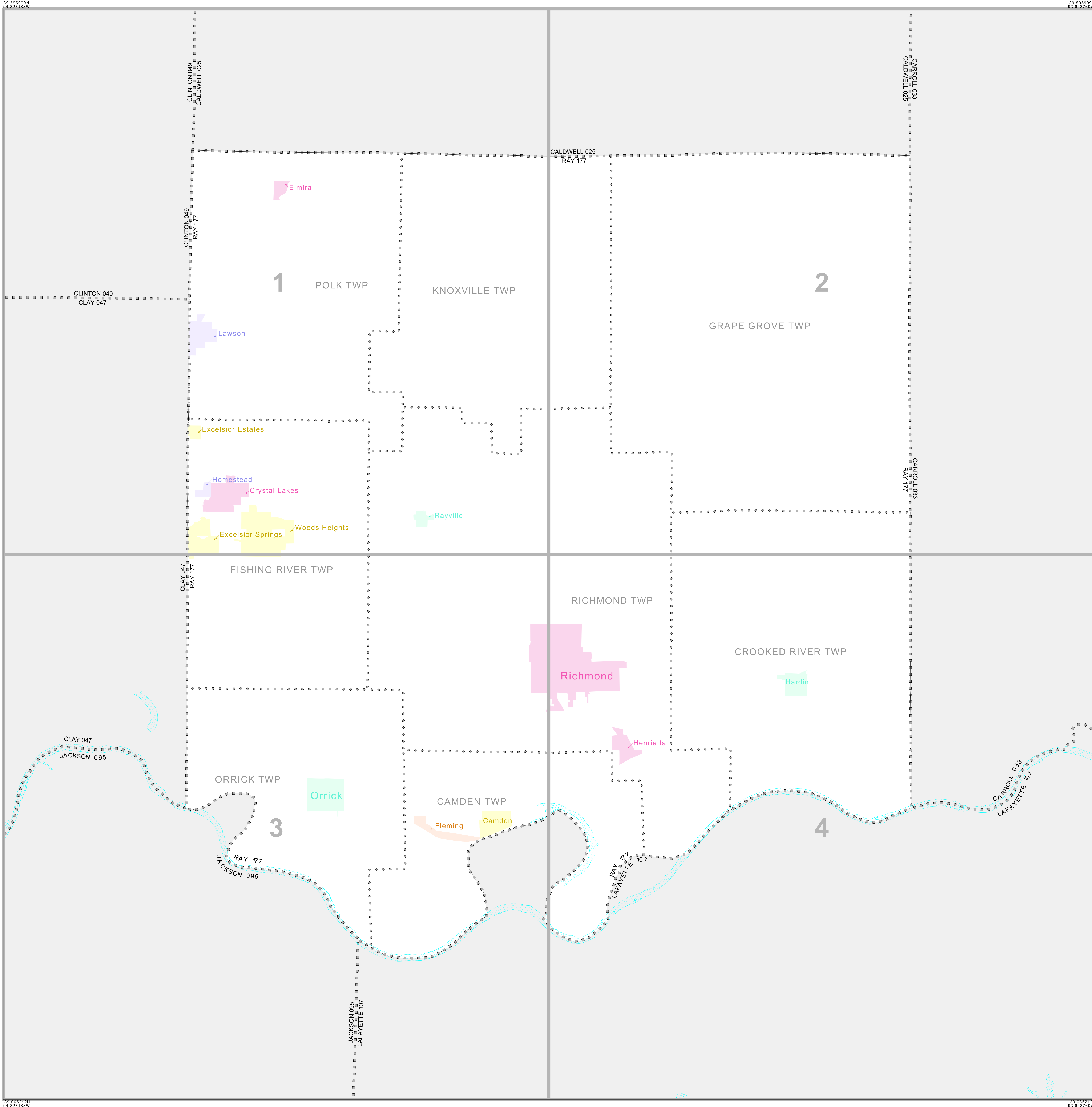
Abbreviation Reference: AIR - American Indian Reservation; Trust Land - Off-Reservation Trust Land; ANRC - Alaska Native Regional Corporation; OTSA - Tribal Designated Statistical Area; Tribal Subdivision - American Indian Tribal Subdivision; SDA/SA - State Designated American Indian Statistical Area; ANRC - Alaska Native Regional Corporation

¹ A "*" following a place name indicates that the place is coextensive with a MCD. A "-" indicates that the place is also a false MCD. In both cases, the MCD name is shown only when it differs from the place name.

P.L. 94-171 VOTING DISTRICT/STATE LEGISLATIVE DISTRICT OUTLINE MAP LEGEND (CENSUS 2000)

SYMBOL DESCRIPTION	SYMBOL	NAME STYLE
International	*****	CANADA
American Indian Reservation (Federal)	*****	L'ANSE RES (1880)
Off-Reservation Trust Land, Hawaiian Home Land	*****	T1880
Oklahoma Tribal Statistical Area, Alaska Native Village Statistical Area, Tribal Designated Statistical Area	o-o-o-o-o	KAW OTSA (5340)
American Indian Tribal Subdivision	o-o-o-o-o	SHONTO (620)
American Indian Reservation (State)	o-o-o-o-o	Tama Res (4125)
State Designated American Indian Statistical Area	o-o-o-o-o	Lumbee (9815)
Alaska Native Regional Corporation	o-o-o-o-o	NANA ANRC 52120
State or Statistically Equivalent Entity	#####	NEW YORK 36
County or Statistically Equivalent Entity	#####	ERIE 029
Minor Civil Division (MCD) ¹	o-o-o-o-o	PIKE TWP 59742
Census County Division (CCD)	o-o-o-o-o	KULA CCD 91890
Consolidated City	o-o-o-o-o	Milford 47500
Incorporated Place ¹	o-o-o-o-o	Rome 63418
Census Designated Place (CDP) ¹	o-o-o-o-o	Zena 84187
Voting District (VTD) ²	o-o-o-o-o	141*
State Legislative District - Senate (SLD-Senate)	o-o-o-o-o	072
State Legislative District - House (SLD-House)	o-o-o-o-o	023

FEATURE	SYMBOL	FEATURE	SYMBOL
All Roads	--- Main St ---	Perennial Stream or Shoreline	~~~~~ Tumbling Cr. ~~~~~
Railroad	--- Southern RR ---	Intermittent Stream or Shoreline	~~~~~ Flory Cr. ~~~~~
Pipeline or Power Line	--- ---	Large River or Lake	~~~~~ Pleasant Lake ~~~~~
Ridge, Fence, or Other Physical Feature	--- ---	Glacier	~~~~~ Bering Glacier ~~~~~
Nonvisible Boundary or Feature Not Elsewhere Classified	--- ---	Military Installation	~~~~~ Fort Belvoir ~~~~~
Inset Area	[Inset Box]	Outside Subject Area	[Out Area Box]



All legal boundaries and names are as of January 1, 2000. The boundaries shown on this map are for Census Bureau statistical data collection and tabulation purposes only; their depiction and designation for statistical purposes does not constitute a determination of jurisdictional authority or rights of ownership or entitlement. U.S. DEPARTMENT OF COMMERCE Economics and Statistics Administration U.S. Census Bureau