

P.L. 94-171 VOTING DISTRICT/STATE LEGISLATIVE DISTRICT OUTLINE MAP (CENSUS 2000)

38 580257N
90.797246W

38 580267N
90.649194W

GEOGRAPHIC AREAS LEGEND

SYMBOL	NAME STYLE
*****	INTERNATIONAL
//////	STATE
□□□□	COUNTY
○	MINOR CIVIL DIV. ¹
■	Incorporated Place ¹
■	Census Designated Place ²
—	Voting District
●	SLD-Senate
▲	SLD-House

Military Inset Out Area

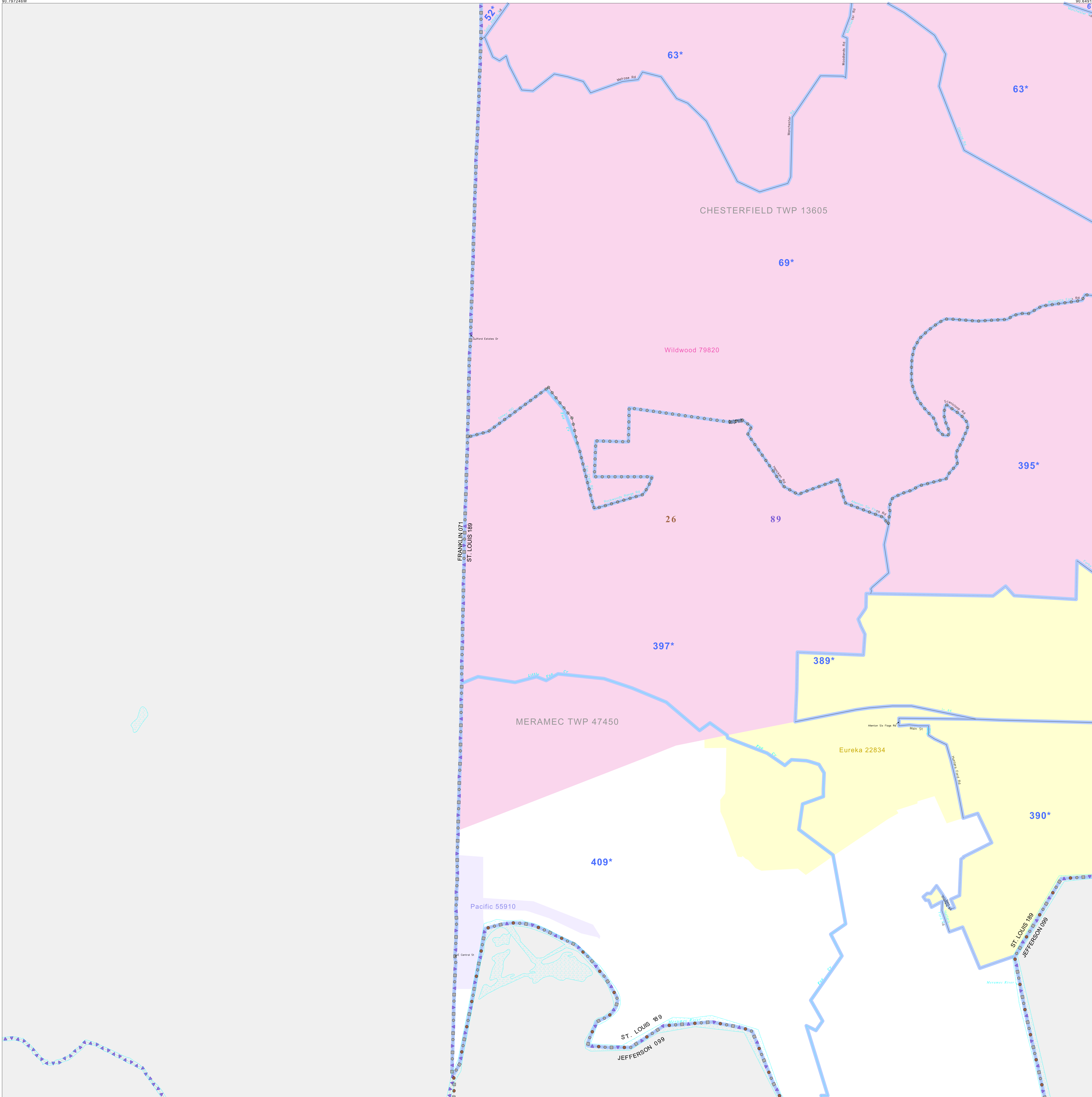
Abbreviation Reference: AIR = American Indian Reservation; SDAISA = State Designated American Indian Statistical Area

¹ A "*" following a place name indicates that the place is coterminous with a MCD. A "-" indicates that the place is also a false MCD. In both cases, the MCD name is shown only when it differs from the place name.

² A "*" following a VTD code indicates an actual voting district. Its absence indicates that the VTD is a pseudo voting district or no information is available as to its status.

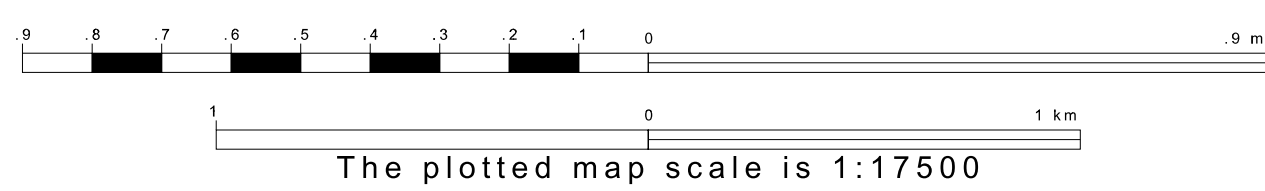
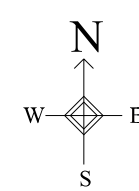
Voting Districts

Code	Name
52*	Chesterfield16761462861664 Voting District
61*	Chesterfield236446264655 Voting District
63*	Chesterfield584636267496365768477 Voting District
69*	Chesterfield584636267496365768477 Voting District
89*	Meramec17 Voting District
389*	Meramec18418420 Voting District
390*	Meramec18418420 Voting District
395*	Meramec18418420 Voting District
397*	Meramec463464647 Voting District
399*	Meramec463464647 Voting District
409*	Meramec5616635 Voting District

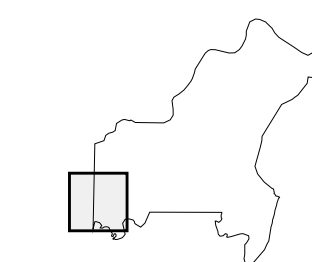


38 464133N
90.797246W

38 464133N
90.649194W



Sheet Location within County



Key to Adjacent Sheets

8	9
12	13
16	

ST: Missouri (29)
COU: St. Louis (189)
SHEET 12 OF 18 PARENT SHEETS

