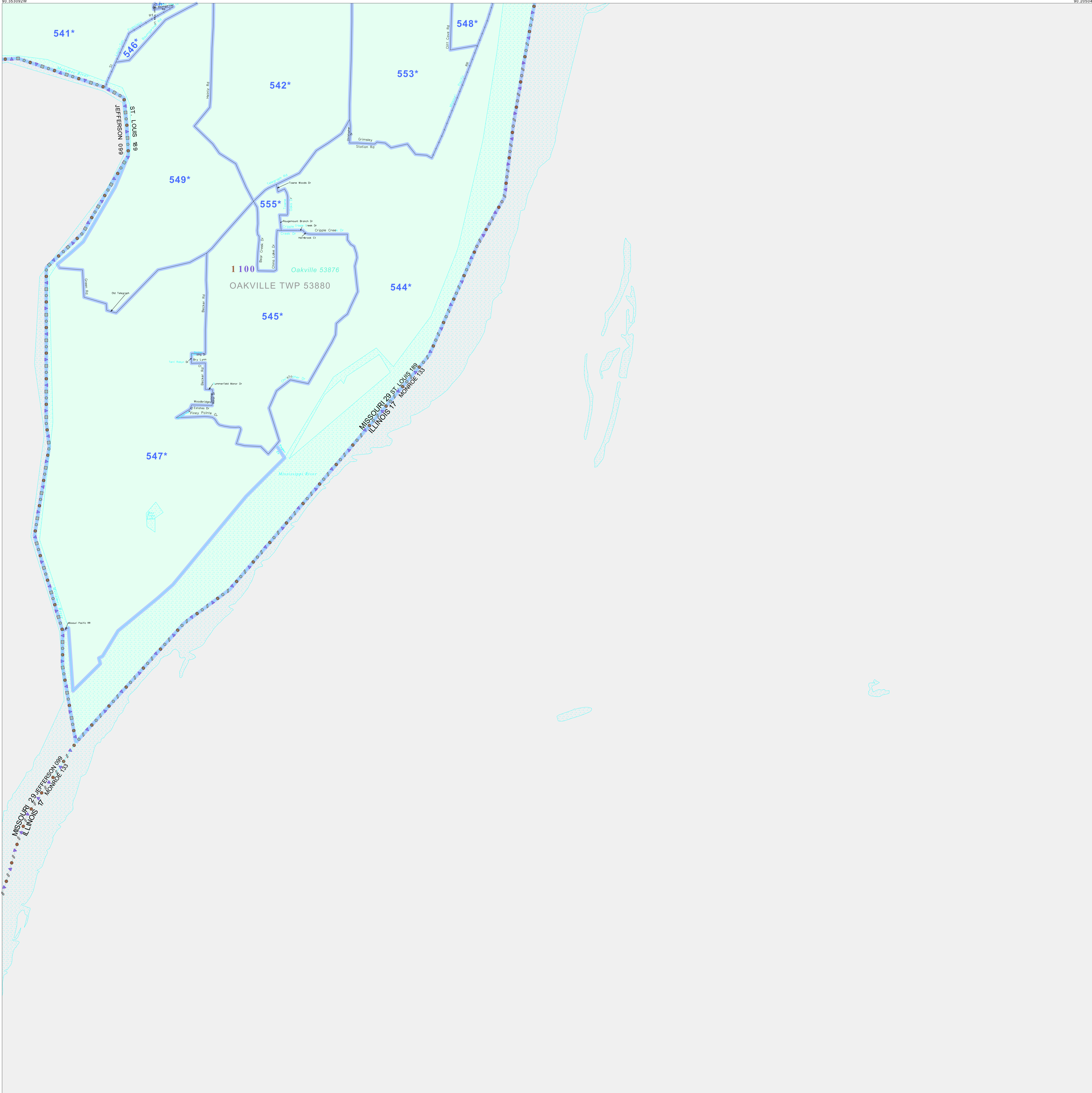


38 464133N
90 353092W

38 464133N
90 205041W



GEOGRAPHIC AREAS LEGEND

SYMBOL	NAME STYLE
*****	INTERNATIONAL
//////	STATE
□□□□	COUNTY
○	MINOR CIVIL DIV ¹
■	Incorporated Place ¹
■	Census Designated Place ²
—	Voting District
●	SLD-Senate
▲	SLD-House
□	Minority
□	Inset
□	Out Area

Abbreviation Reference: AIR - American Indian Reservation; SDAISA - State Designated American Indian Statistical Area

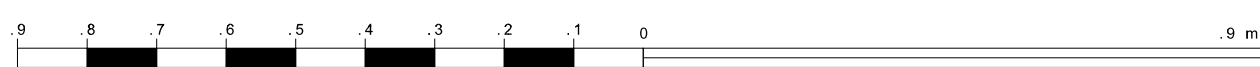
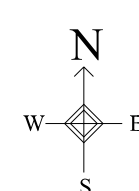
¹ A "*" following a place name indicates that the place is coterminous with a MCD. A "-" indicates that the place is also a false MCD. In both cases, the MCD name is shown only when it differs from the place name.
² A "*" following a VTD code indicates an actual voting district. Its absence indicates that the VTD is a pseudo voting district or no information is available as to its status.

Voting Districts

Code	Name
541*	Oakville10 Voting District
542*	Oakville1622 Voting District
544*	Oakville1628 Voting District
545*	Oakville17420&27 Voting District
546*	Oakville1829 Voting District
547*	Oakville19 Voting District
548*	Oakville7 Voting District
549*	Oakville21&26 Voting District
553*	Oakville3 Voting District
555*	Oakville1416&25 Voting District

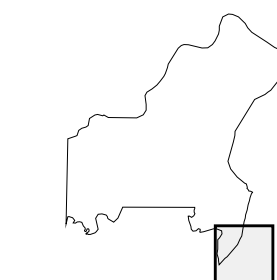
38 348009N
90 353092W

38 348009N
90 205041W



The plotted map scale is 1:17500

Sheet Location within County



Key to Adjacent Sheets

14	15
17	18

ST: Missouri (29)
 COU: St. Louis (189)
 SHEET 18 OF 18 PARENT SHEETS

