

P.L. 94-171 VOTING DISTRICT/STATE LEGISLATIVE DISTRICT OUTLINE MAP (CENSUS 2000)

GEOGRAPHIC AREAS LEGEND

SYMBOL	NAME STYLE
*****	INTERNATIONAL
//////	STATE
□□□□□□	COUNTY
○ ○ ○ ○ ○	MINOR CIVIL DIV ¹
■ ■ ■ ■ ■	Incorporated Place ¹
■ ■ ■ ■ ■	Census Designated Place ²
▬▬▬▬▬	Voting District ²
● ● ● ● ●	SLD-Senate
▲ ▲ ▲ ▲ ▲	SLD-House
□ □ □ □ □	Moisture
□ □ □ □ □	Inset
□ □ □ □ □	Out Area

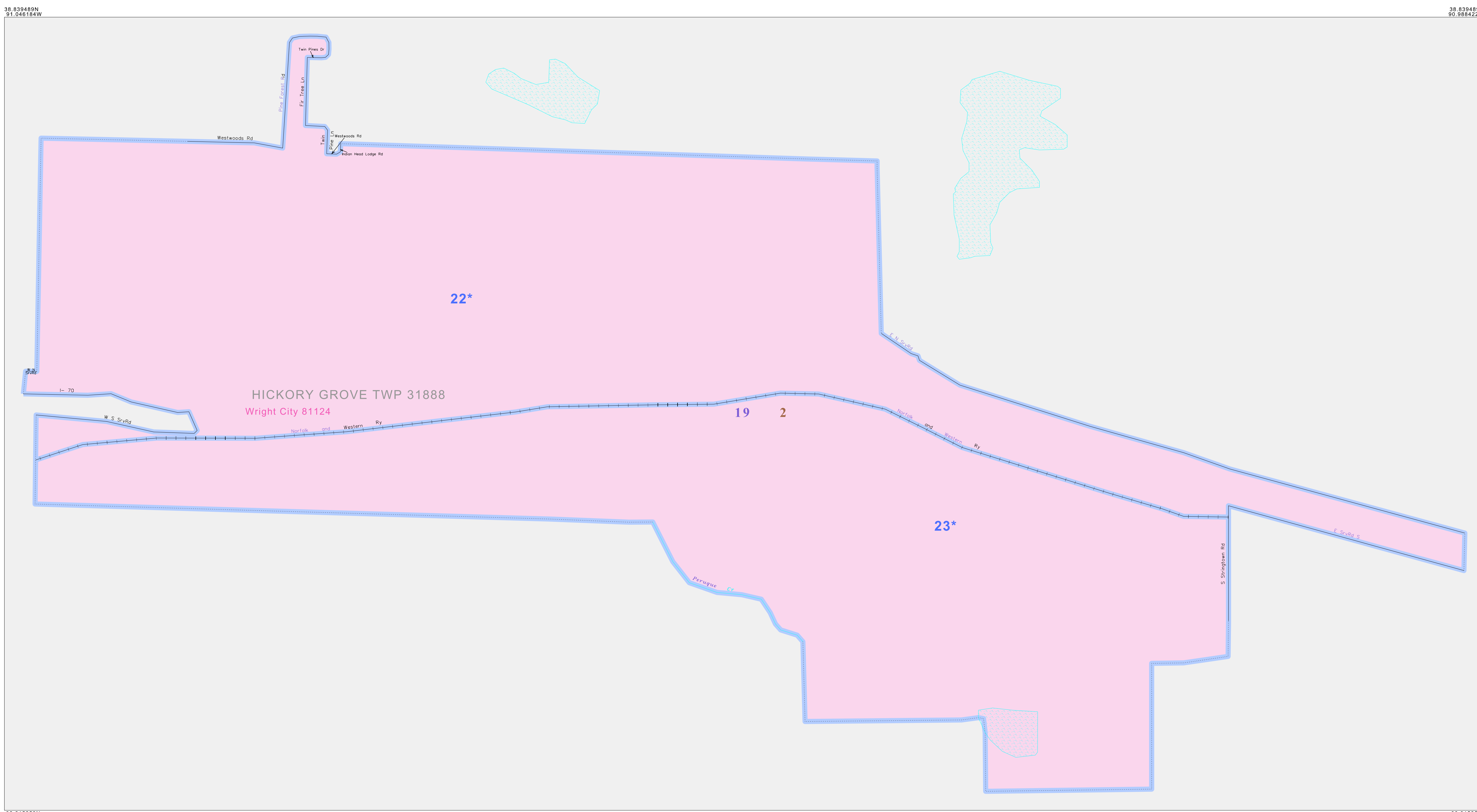
Abbreviation Reference: AIR - American Indian Reservation; SDAISA - State Designated American Indian Statistical Area

¹ A "*" following a place name indicates that the place is coterminous with a MCD. A "-" indicates that the place is also a MCD. In both cases, the MCD name is shown only when it differs from the place name.

² A "*" following a VTD code indicates an actual voting district. Its absence indicates that the VTD is a pseudo voting district or no information is available as to its status.

Voting Districts

Code	Name
22*	WrightCityWard1
23*	WrightCityWard2



38 830489N 91 046184W

38 830489N 90 986222W

38 815256N 91 046184W

38 815256N 90 986222W

Key to Adjacent Sheets

A01

ST: Missouri (29)
COU: Warren (219)
INSET SHEET A01

The plotted map scale is 1:7200

All legal boundaries and names are as of January 1, 2000. The boundaries shown on this map are for Census Bureau statistical data collection and tabulation purposes only; their depiction and designation for statistical purposes does not constitute a determination of jurisdictional authority or rights of ownership or entitlement. U.S. DEPARTMENT OF COMMERCE Economics and Statistics Administration U.S. Census Bureau