

P. L. 94-171 COUNTY BLOCK MAP (CENSUS 2000)

38 103170N
91 121486W

38 103170N
90 953829W

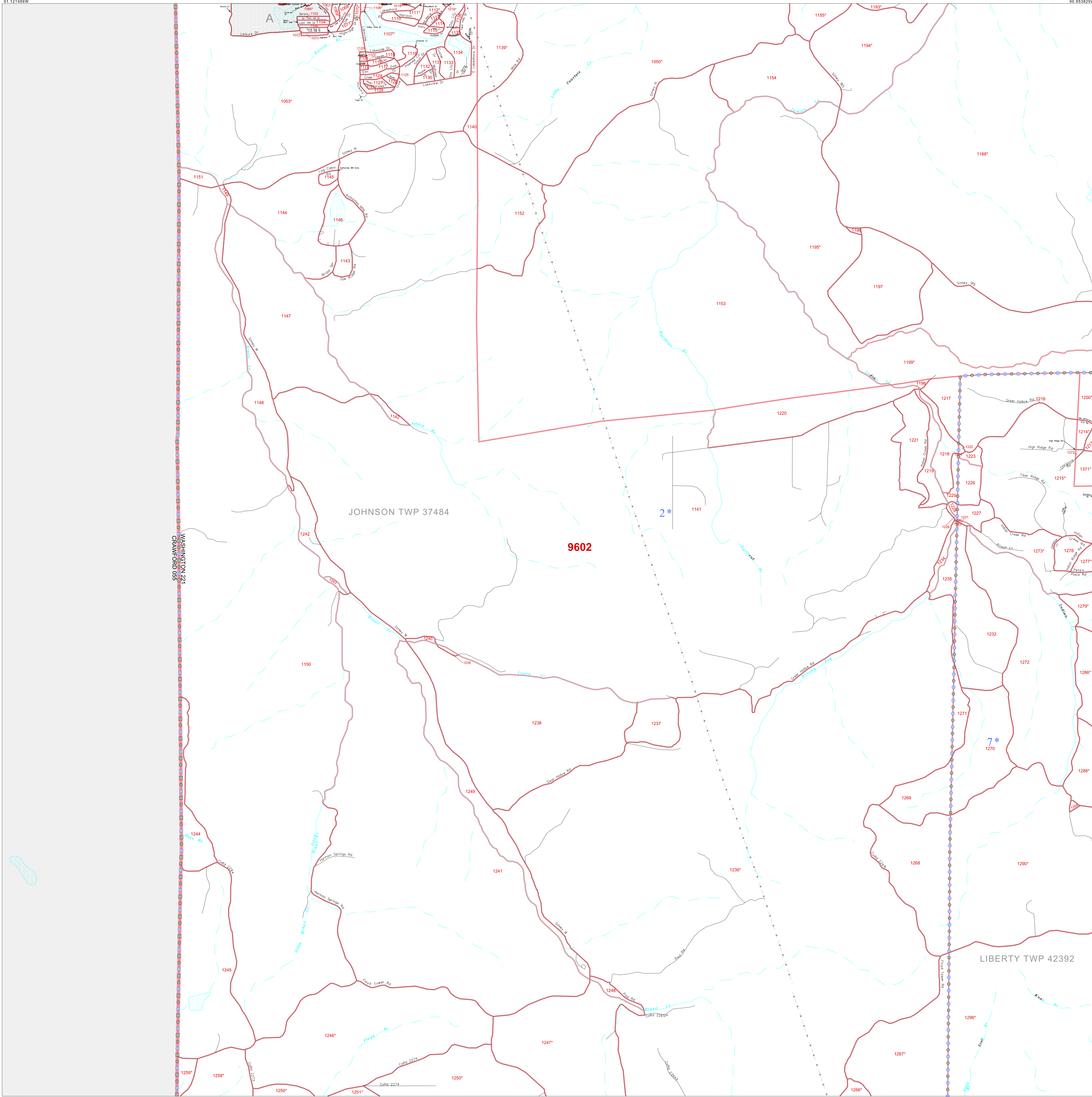
GEOGRAPHIC AREAS LEGEND

SYMBOL	NAME STYLE
*****	INTERNATIONAL
//////	STATE
■■■■■■	COUNTY
■■■■■■	MINOR CIVIL DIV. ¹
■ ■ ■ ■ ■ ■	Incorporated Place ²
■ ■ ■ ■ ■ ■	Census Designated Place ²
.....	Corporate Offset Boundary
●●●●●●	Voting District ³
■■■■■■	Census Tract
■■■■■■	BLOCK ³

1 A "*" following a place name indicates that the place is coterminous with a MCD. A "-" indicates that the place is also a false MCD. In both cases, the MCD name is shown only when it differs from the place name.

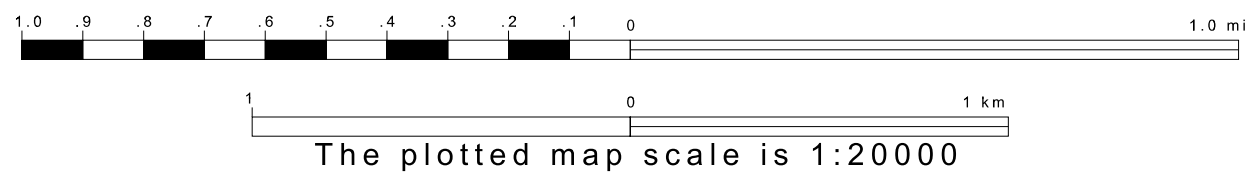
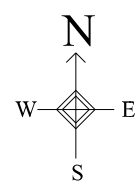
2 A "*" following a VTD code indicates an actual voting district. Its absence indicates that the VTD is a pseudo voting district or no information is available as to its status.

3 A "*" following a block number indicates that the block number is repeated elsewhere in the block.

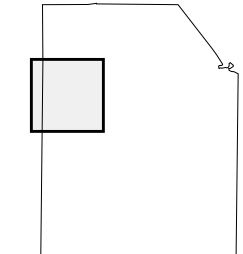


37 970441N
91 121486W

37 970441N
90 953829W



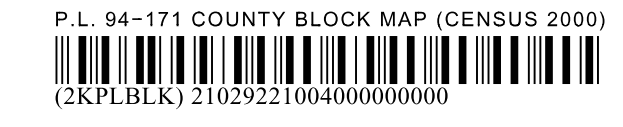
Sheet Location within County



Key to Adjacent Sheets

1	2
4	5
7	8

ST: Missouri (29)
COU: Washington (221)
SHEET 4 OF 12 PARENT SHEETS



All legal boundaries and names are as of January 1, 2000. The boundaries shown on this map are for Census Bureau statistical data collection and tabulation purposes only; their depiction and designation for statistical purposes does not constitute a determination of jurisdictional authority or rights of ownership or entitlement. U.S. DEPARTMENT OF COMMERCE Economics and Statistics Administration U.S. Census Bureau