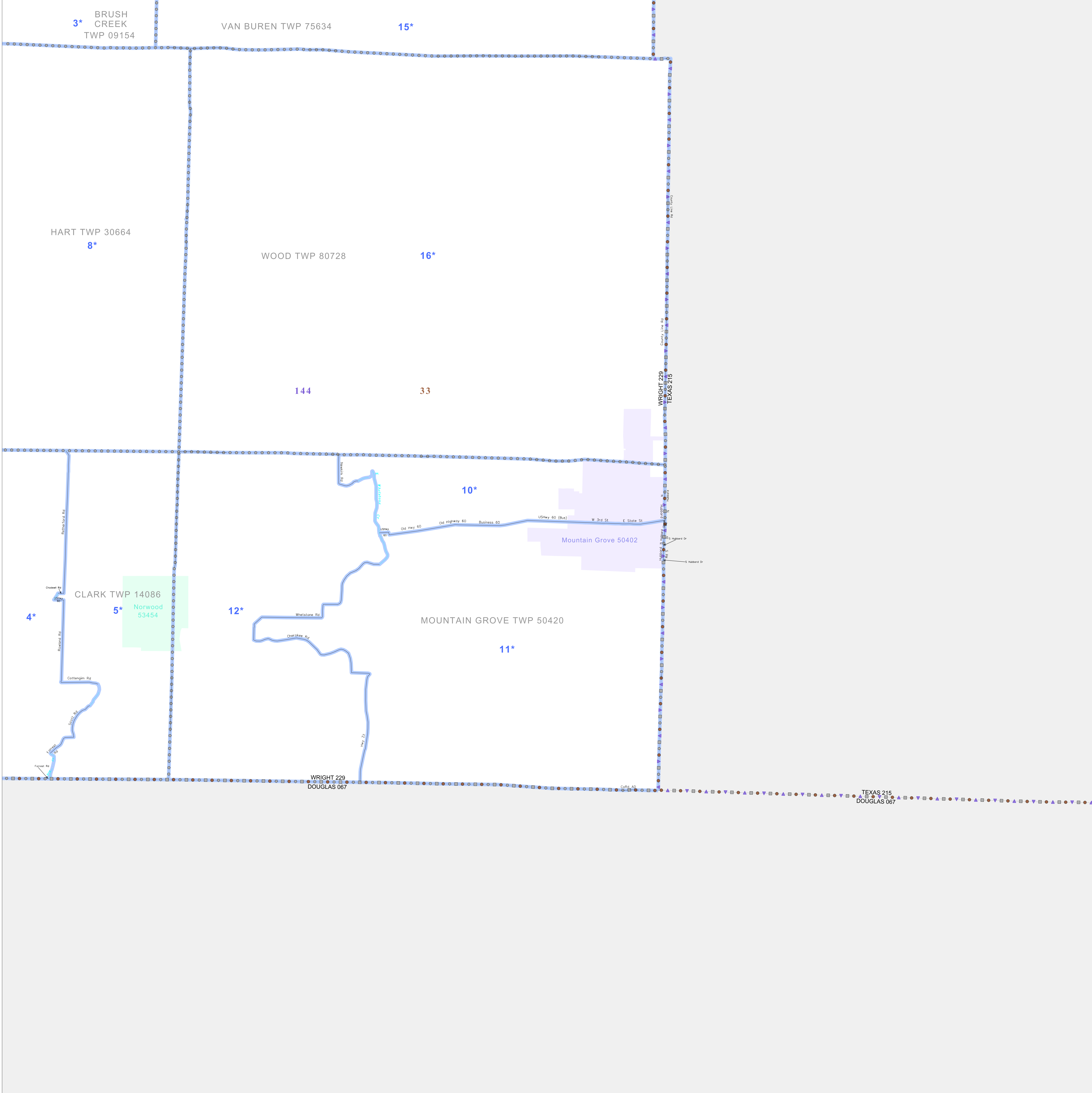


P.L. 94-171 VOTING DISTRICT/STATE LEGISLATIVE DISTRICT OUTLINE MAP (CENSUS 2000)

37 270599N  
92 469771W

37 270599N  
92 104387W



### GEOGRAPHIC AREAS LEGEND

SYMBOL	NAME STYLE
*****	INTERNATIONAL
//////	STATE
□□□□	COUNTY
○ ○ ○ ○ ○	MINOR CIVIL DIV. <sup>1</sup>
■ ■ ■ ■ ■	Incorporated Place <sup>1</sup>
■ ■ ■ ■ ■	Census Designated Place <sup>2</sup>
—	Voting District
● ● ● ● ●	SLD-Senate
▲ ▲ ▲ ▲ ▲	SLD-House
□ □ □ □ □	Out Area

Abbreviation Reference: AIR - American Indian Reservation; SDAISA - State Designated American Indian Statistical Area

<sup>1</sup> A "\*" following a place name indicates that the place is coterminous with a MCD. A "-" indicates that the place is also a false MCD. In both cases, the MCD name is shown only when it differs from the place name.

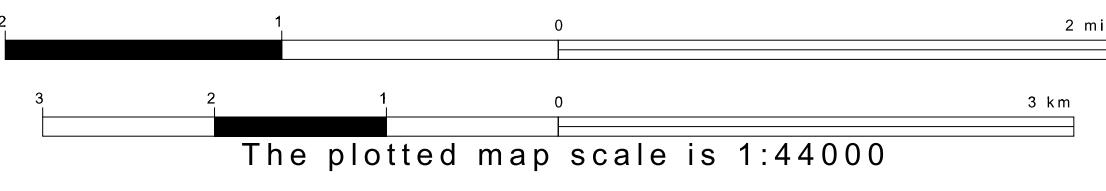
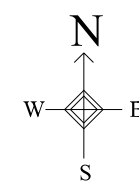
<sup>2</sup> A "\*" following a VTD code indicates an actual voting district. Its absence indicates that the VTD is a pseudo voting district or no information is available as to its status.

### Voting Districts

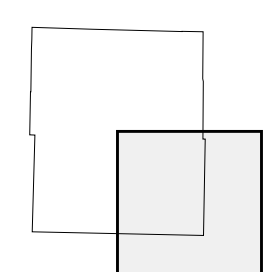
Code	Name
3*	BrushCreek Voting District
4*	ClarkMason Voting District
5*	ClarkNewell Voting District
8*	Hart Voting District
10*	WoodsSouth Voting District
11*	WoodsNorth Voting District
12*	WoodsWest Voting District
15*	VanBuren Voting District
16*	Wood Voting District

36 978562N  
92 469771W

36 978562N  
92 104387W



Sheet Location within County



Key to Adjacent Sheets



ST: Missouri (29)  
COU: Wright (229)  
SHEET 4 OF 4 PARENT SHEETS

