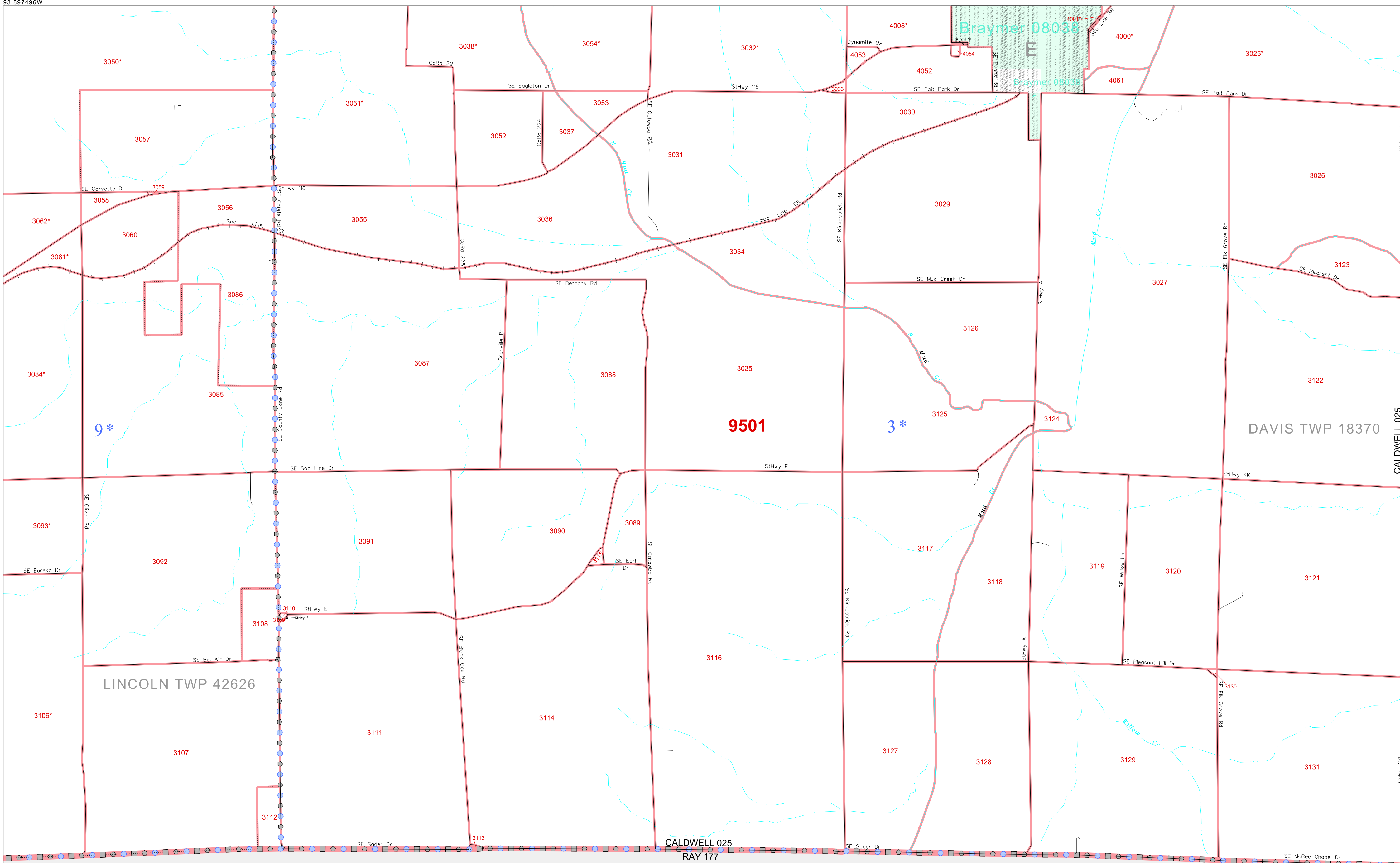


P. L. 94-171 COUNTY BLOCK MAP (CENSUS 2000)

39 590250N
93.897496W

39 590250N
93.725839W



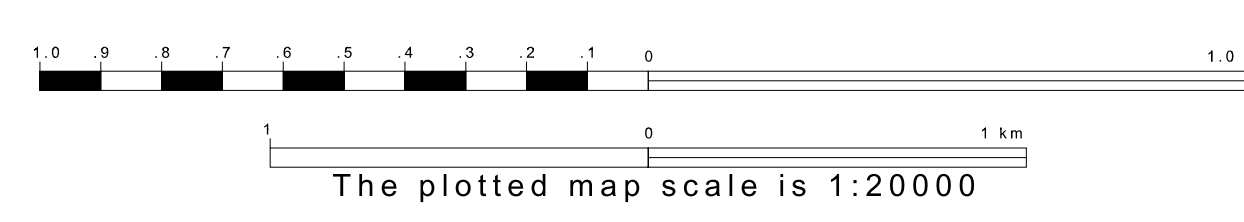
GEOGRAPHIC AREAS LEGEND

SYMBOL	NAME STYLE
☆☆☆☆☆	INTERNATIONAL
///////	STATE
□□□□□	COUNTY
□□□□□	MINOR CIVIL DIV ¹
■	Incorporated Place ¹
■	Census Designated Place ²
---	Corporate Offset Boundary
●●●●●	Voting District ³
---	Census Tract
---	BLOCK ³
■	Military
Inset	Inset
Out Area	Out Area

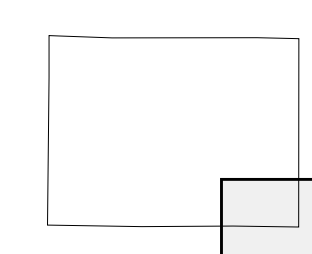
1 A "*" following a place name indicates that the place is coterminous with a MCD. A "-" indicates that the place is also a false MCD. In both cases, the MCD name is shown only when it differs from the place name.
 2 A "*" following a VTD code indicates an actual voting district. Its absence indicates that the VTD is a pseudo voting district or no information is available as to its status.
 3 A "*" following a block number indicates that the block number is repeated elsewhere in the block.

39 457561N
93.897496W

39 457561N
93.725839W



Sheet Location within County



Key to Adjacent Sheets

5	6
8	9

ST: Missouri (29)
 COU: Caldwell (025)
 SHEET 9 OF 9 PARENT SHEETS

