

P. L. 94-171 COUNTY BLOCK MAP (CENSUS 2000)

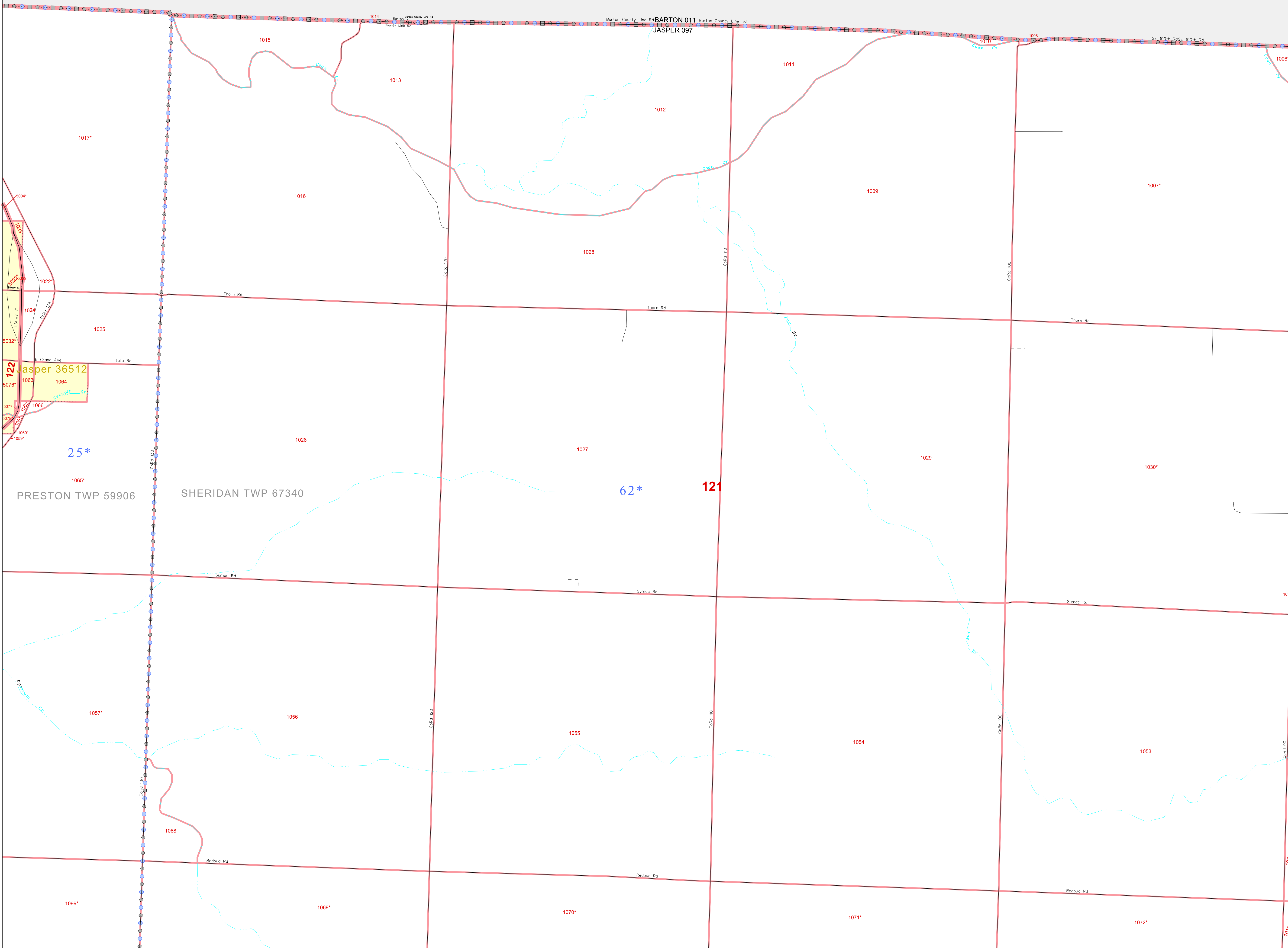
37 372151N
94 293965W

37 372151N
94 210990W

GEOGRAPHIC AREAS LEGEND

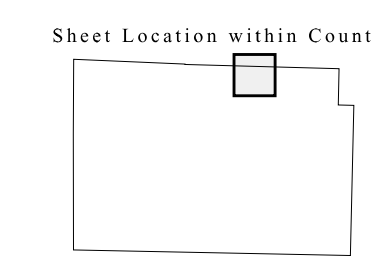
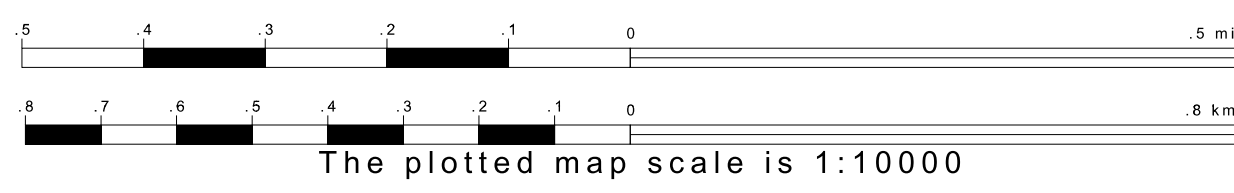
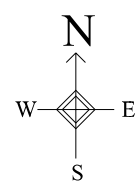
| SYMBOL | NAME STYLE |
|---------|--------------------------------------|
| ***** | INTERNATIONAL |
| /////// | STATE |
| ■■■■■ | COUNTY |
| ●●●●● | MINOR CIVIL DIV ¹ |
| ■■■■■ | Incorporated Place ² |
| ■■■■■ | Census Designated Place ² |
| ----- | Corporate Offset Boundary |
| ●●●●● | Voting District ³ |
| ■■■■■ | Census Tract |
| ■■■■■ | BLOCK ³ |
| ■ | Military |
| ■ | Inset |
| ■ | Out Area |

1 A "*" following a place name indicates that the place is coterminous with a MCD. A "-" indicates that the place is also a false MCD. In both cases, the MCD name is shown only when it differs from the place name.
 2 A "*" following a VTD code indicates an actual voting district. Its absence indicates that the VTD is a pseudo voting district or no information is available as to its status.
 3 A "*" following a block number indicates that the block number is repeated elsewhere in the block.



37 305778N
94 293965W

37 305778N
94 210990W



Key to Adjacent Sheets

| | | |
|----|----|----|
| 4 | 5 | 6 |
| 11 | 12 | 13 |

ST: Missouri (29)
 COU: Jasper (097)
 SHEET 5 OF 35 PARENT SHEETS