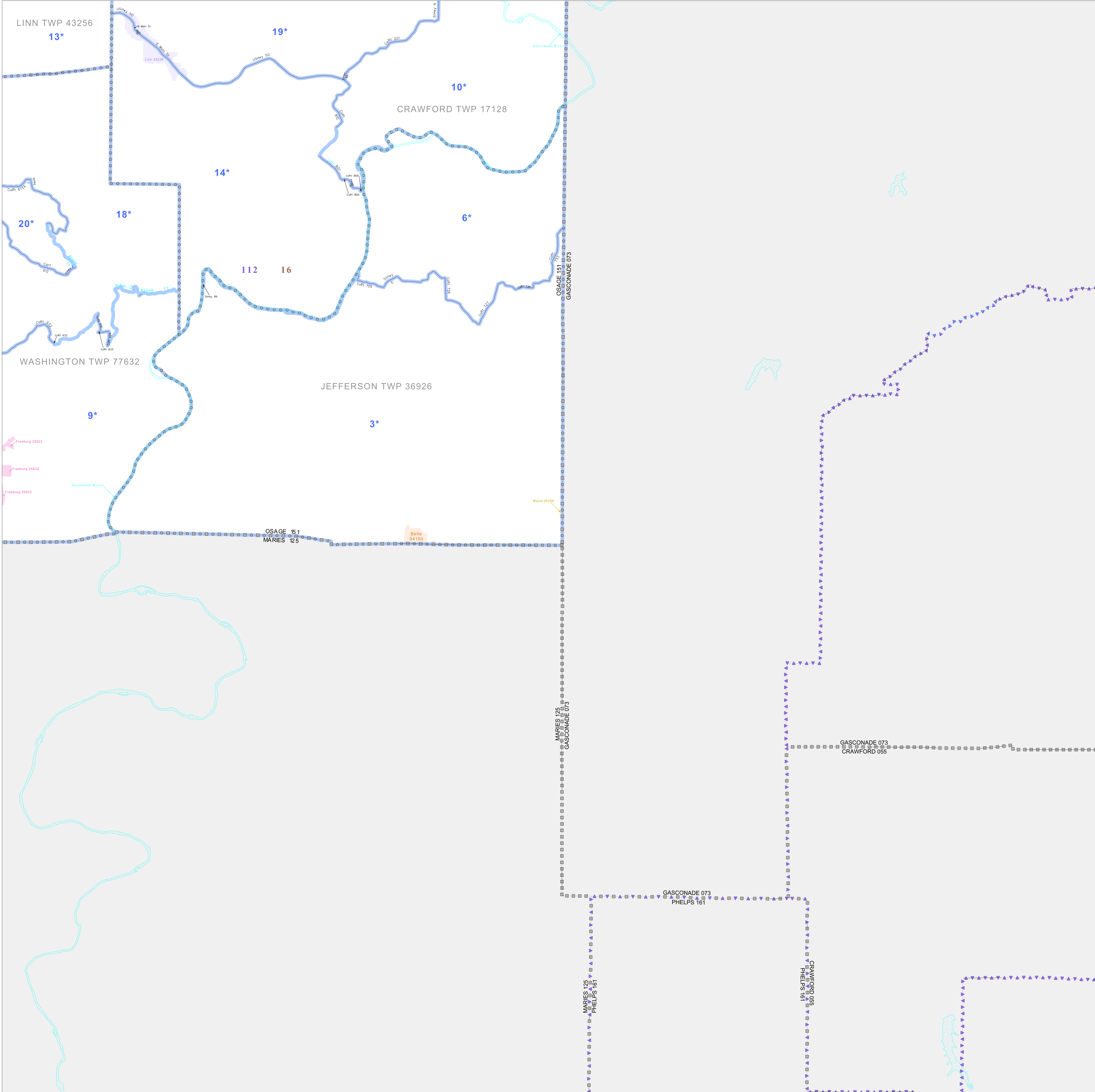


P.L. 94-171 VOTING DISTRICT/STATE LEGISLATIVE DISTRICT OUTLINE MAP (CENSUS 2000)

36 494028N
91 918022W

36 494028N
91 383034W



GEOGRAPHIC AREAS LEGEND

SYMBOL	NAME STYLE
*****	INTERNATIONAL
//////	STATE
□□□□	COUNTY
○	MINOR CIVIL DIV ¹
■	Incorporated Place ¹
■	Census Designated Place ²
—	Voting District
●	SLD-Senate
▲	SLD-House
□	Minority
□	Inset
□	Out Area

Abbreviation Reference: AIR - American Indian Reservation; SDAISA - State Designated American Indian Statistical Area

¹ A "*" following a place name indicates that the place is coterminous with a MCD. A "-" indicates that the place is also a false MCD. In both cases, the MCD name is shown only when it differs from the place name.

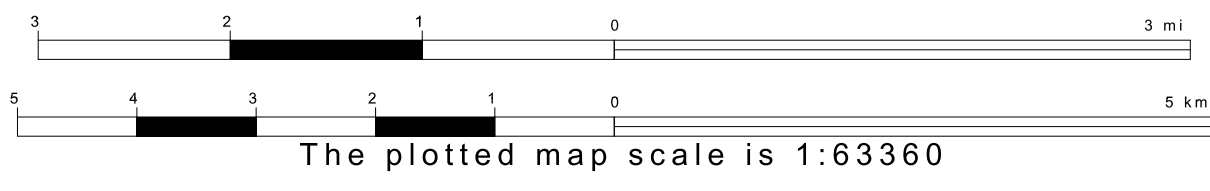
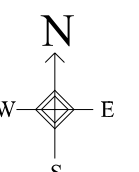
² A "*" following a VTD code indicates an actual voting district. Its absence indicates that the VTD is a pseudo voting district or no information is available as to its status.

Voting Districts

Code	Name
3*	Belle Voting District
6*	Casperhill Voting District
9*	Frederick Voting District
10*	Freedom Voting District
11*	Lansdowne Voting District
14*	Massena/Kali Voting District
16*	Ridgeway Voting District
18*	St. George Voting District
20*	Westphalia Voting District

36 077583N
91 918022W

36 077583N
91 383034W



Sheet Location within County

Key to Adjacent Sheets

1	2
3	4

ST: Missouri (29)
COU: Osage (151)
SHEET 4 OF 4 PARENT SHEETS

