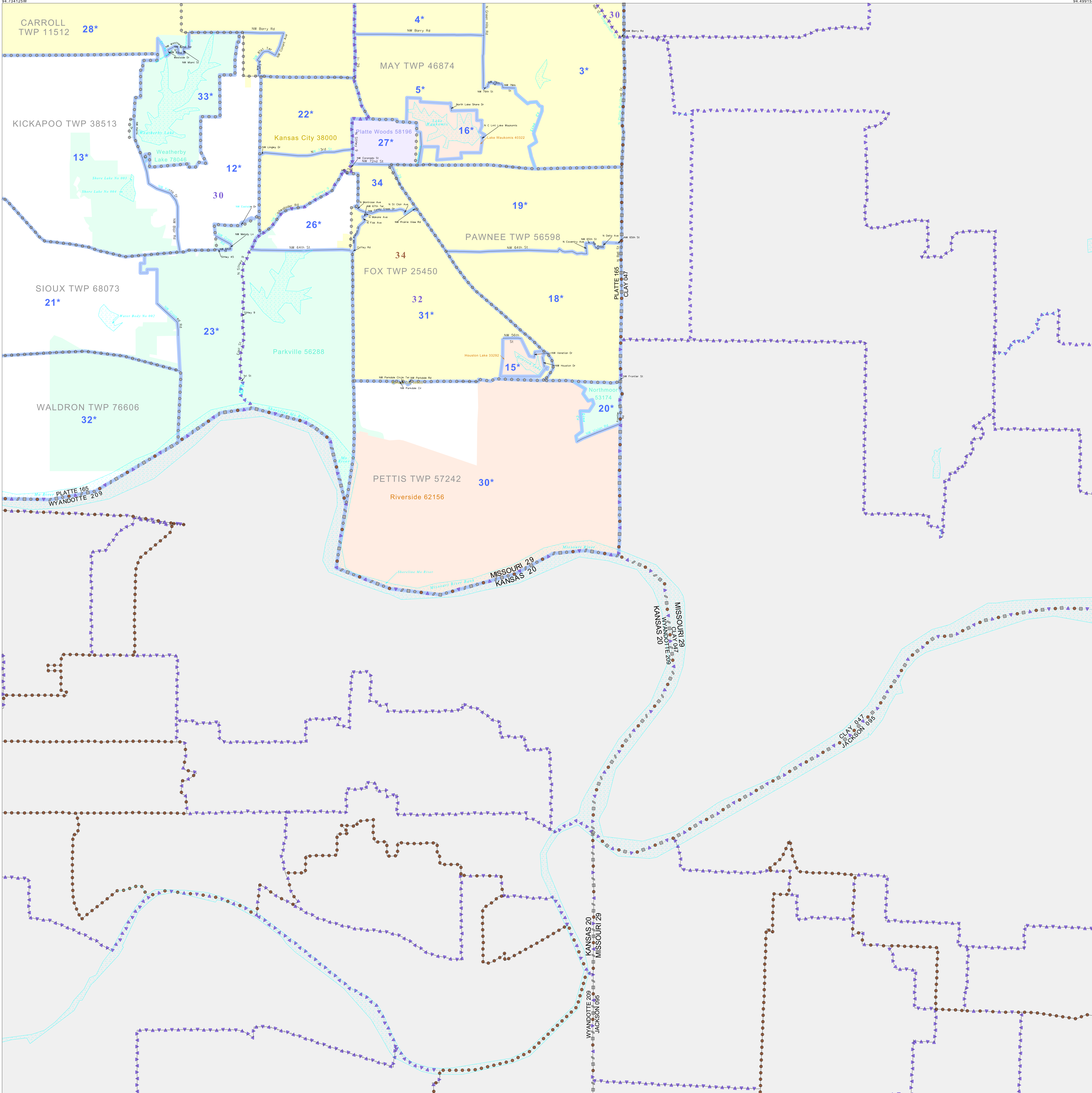


P.L. 94-171 VOTING DISTRICT/STATE LEGISLATIVE DISTRICT OUTLINE MAP (CENSUS 2000)

39 251987N
94 734125W

39 251987N
94 499154W



GEOGRAPHIC AREAS LEGEND

- | SYMBOL | NAME STYLE |
|--------|--------------------------------------|
| ***** | INTERNATIONAL |
| ===== | STATE |
| ▣▣▣▣▣ | COUNTY |
| ○ | MINOR CIVIL DIV. ¹ |
| ■ | Incorporated Place ¹ |
| ■ | Census Designated Place ² |
| — | Voting District |
| ●●●●● | SLD-Senate |
| ▲▲▲▲▲ | SLD-House |

Abbreviation Reference: AIR - American Indian Reservation; SDAISA - State Designated American Indian Statistical Area

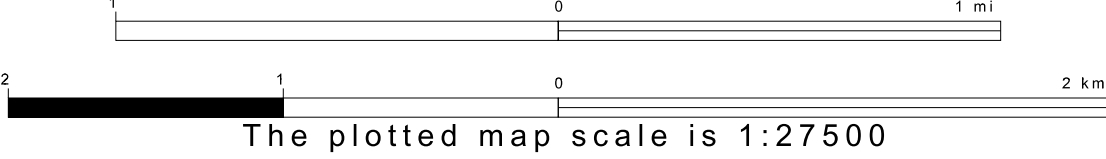
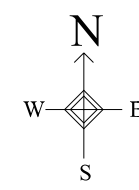
¹ A "*" following a place name indicates that the place is consecutive with a MCD. A "-" indicates that the place is also a false MCD. In both cases, the MCD name is shown only when it differs from the place name.
² A "*" following a VTD code indicates an actual voting district. Its absence indicates that the VTD is a pseudo voting district or no information is available as to its status.

Voting Districts

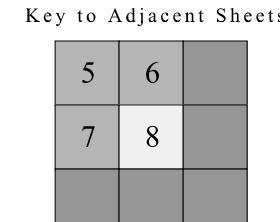
Code	Name
3*	BerryEast Voting District
4*	BerryNorth Voting District
5*	BerrySouth Voting District
12*	HampdenEast Voting District
13*	HampdenWest Voting District
15*	HoustonLake Voting District
16*	LakeWaukomis Voting District
18*	Lind Creek Voting District
19*	NorthernHeights Voting District
20*	Northern Voting District
21*	Park Voting District
22*	ParkvilleNorth Voting District
23*	Parkville Voting District
24*	Platteville Voting District
27*	Platte Woods Voting District
28*	PrairiePointe327HansSpringe Voting District
30*	Riverside Voting District
31*	Southeast Voting District
32*	Waldron Voting District
33*	WeatherlyLake Voting District
34	ParkvilleSouth Voting District

39 069533N
94 734125W

39 069533N
94 499154W



Sheet Location within County



ST: Missouri (29)
 COU: Platte (165)
 SHEET 8 OF 8 PARENT SHEETS

