

P.L. 94-171 VOTING DISTRICT/STATE LEGISLATIVE DISTRICT OUTLINE MAP (CENSUS 2000)

37 712312N  
92 217391W

37 513214N  
91 966444W

**GEOGRAPHIC AREAS LEGEND**

SYMBOL	NAME STYLE
*****	INTERNATIONAL
//////	STATE
□□□□□□	COUNTY
○ ○ ○ ○ ○	MINOR CIVIL DIV <sup>1</sup>
■ ■ ■ ■ ■	Incorporated Place <sup>1</sup>
■ ■ ■ ■ ■	Census Designated Place <sup>1</sup>
— — — — —	Voting District <sup>2</sup>
● ● ● ● ●	SLD-Senate
▲ ▲ ▲ ▲ ▲	SLD-House
□ □ □ □ □	Military
□ □ □ □ □	Inset
□ □ □ □ □	Out Area

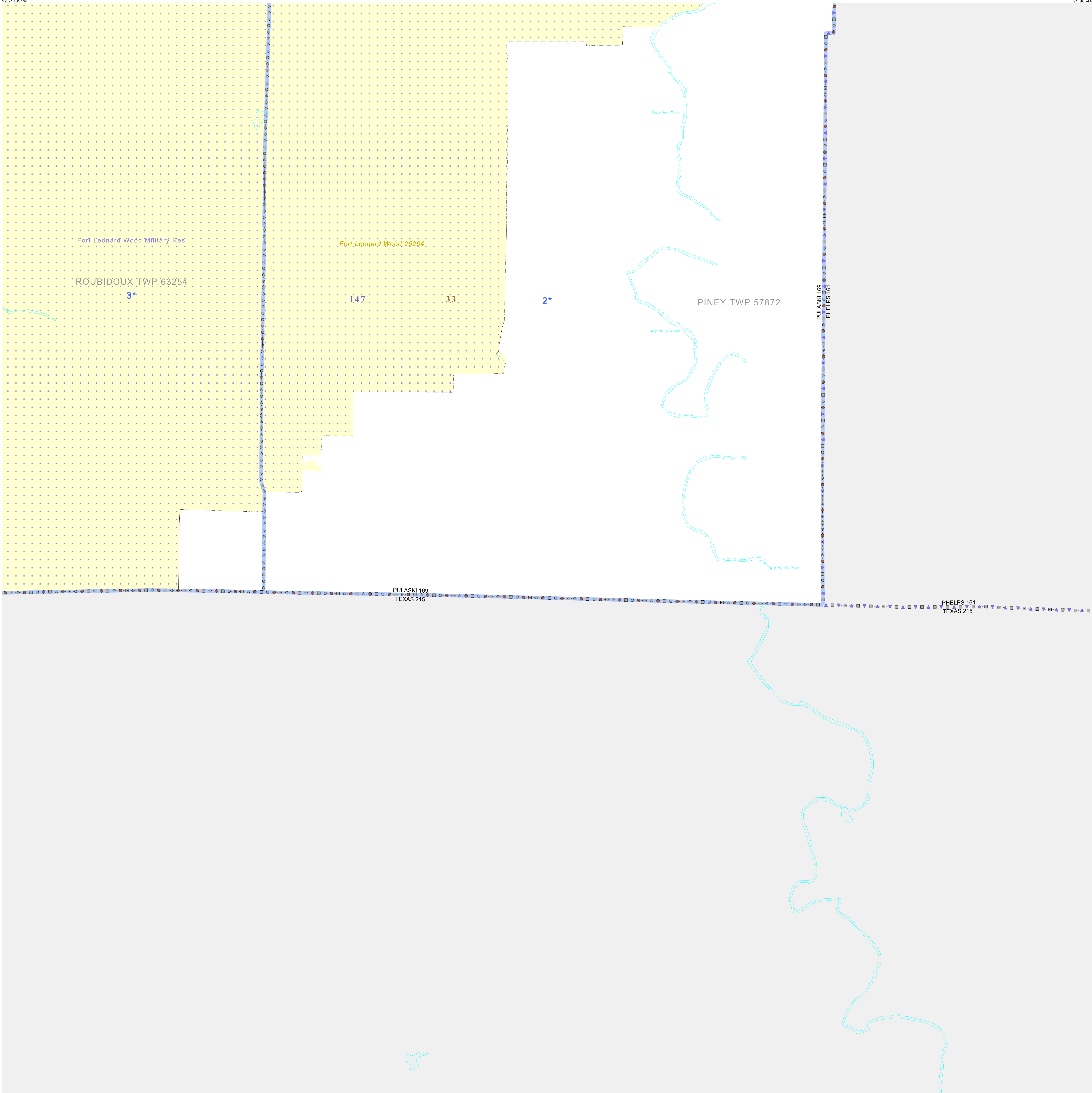
Abbreviation Reference: AIR - American Indian Reservation; SDAISA - State Designated American Indian Statistical Area

<sup>1</sup> A " " following a place name indicates that the place is coterminous with a MCD. A " " indicates that the place is also a false MCD. In both cases, the MCD name is shown only when it differs from the place name.

<sup>2</sup> A " " following a VTD code indicates an actual voting district. Its absence indicates that the VTD is a pseudo voting district or no information is available as to its status.

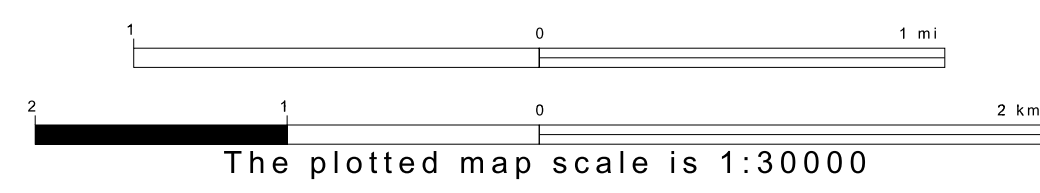
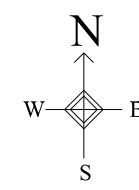
**Voting Districts**

Code	Name
2*	BigPiney Voting District
3*	CaveSpring Voting District

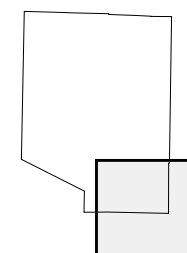


37 513214N  
92 217391W

37 513214N  
91 966444W



Sheet Location within County



Key to Adjacent Sheets

3	4
5	6

ST: Missouri (29)  
COU: Pulaski (169)  
SHEET 6 OF 6 PARENT SHEETS

